



64 Saxon Way, Bourne
£280,000

 **NEWTON FALLOWELL**

64 Saxon Way

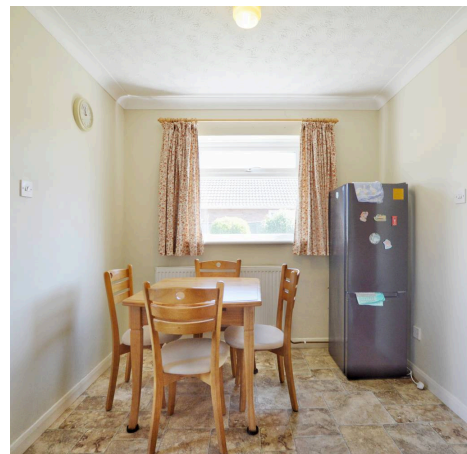
Bourne, Bourne

Situated within walking distance to Bourne Town centre is this stunning three bedroom detached bungalow, benefitting from three spacious bedrooms and great living space.

As you enter the property you are greeted with an entrance porch then into the hall providing access to all of the three generous sized bedrooms, living room and bathroom. A large window overlooking the private garden welcomes you into the spacious living room. Just off the living room is the kitchen/diner. The kitchen is a modern design with a dining space which again has the outlook onto the garden. A rear porch has been built with the ability to house the washing machine so it keeps it out of the main space in the kitchen.

The bathroom has a walk in electric shower and is a very good size allowing for potentially a change around of the suite. Bedroom one and two are spacious with plenty of room for furniture and double beds and have an outlook onto the front of the plot. The third bedroom is a single which overlooks the driveway.

Outside, ample off street parking is available by a driveway, more parking to the front of the bungalow and a single garage is situated at the back of the driveway. To the side of the property you have access into a large private patio area with sheds and along to the rear garden which is not immediately overlooked. This bungalow offers a great amount of outside space, with a large east facing rear garden, which is mainly laid to lawn with a patio section.





Entrance Porch

Hallway

12' 4" x 10' 2" (3.75m x 3.10m)

Living Room

14' 8" x 13' 11" (4.47m x 4.23m)

Kitchen/Diner

14' 8" x 8' 1" (4.48m x 2.47m)

Rear Porch

6' 0" x 2' 11" (1.83m x 0.89m)

Bathroom

10' 0" x 8' 4" (3.06m x 2.53m)

Bedroom One

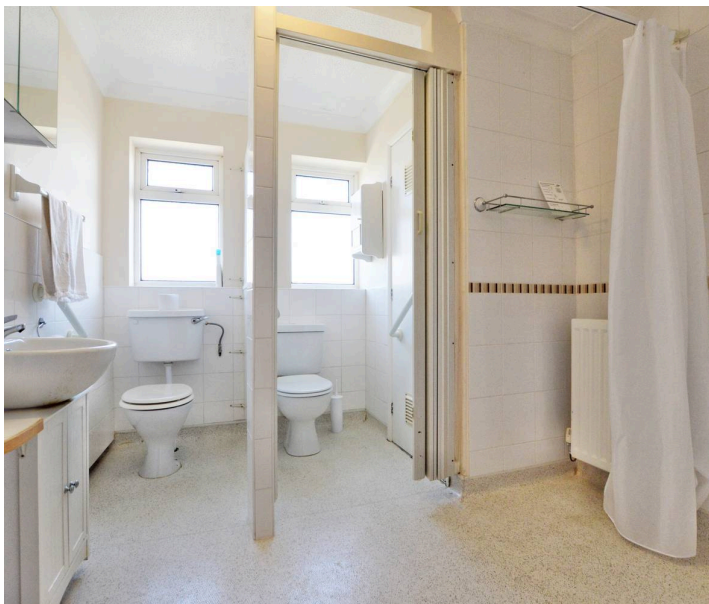
12' 1" x 10' 1" (3.68m x 3.08m)

Bedroom Two

8' 1" x 11' 11" (2.47m x 3.63m)

Bedroom Three

8' 1" x 8' 8" (2.47m x 2.63m)





NO CHAIN

Private East Facing Rear Garden

Front Garden area

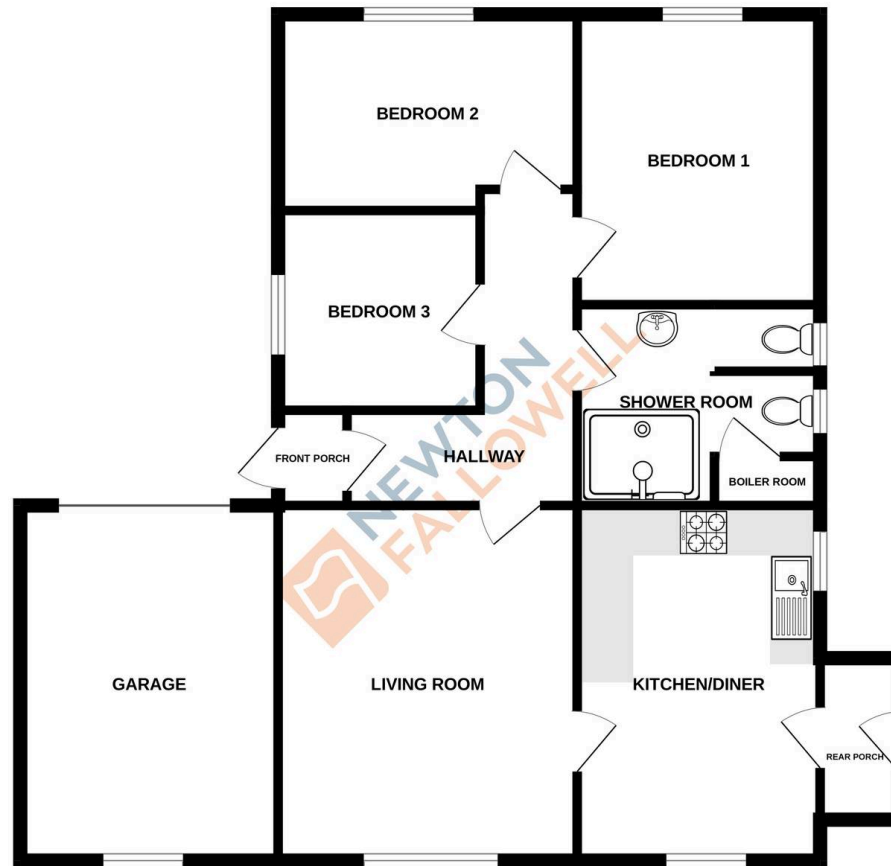
Driveway for multiple Vehicles

Single Garage

Sought after location



GROUND FLOOR
960 sq.ft. (89.2 sq.m.) approx.



TOTAL FLOOR AREA : 960 sq.ft. (89.2 sq.m.) approx.

Whilst every attempt has been made to ensure the accuracy of the floorplan contained here, measurements of doors, windows, rooms and any other items are approximate and no responsibility is taken for any error, omission or mis-statement. This plan is for illustrative purposes only and should be used as such by any prospective purchaser. The services, systems and appliances shown have not been tested and no guarantee as to their operability or efficiency can be given.
Made with Metropix ©2025

Newton Fallowell - Bourne

Newton Fallowell, 2 North Street - PE10 9EA

01778 422567 · bourne@newtonfallowell.co.uk · newtonfallowell.co.uk/bourne