



Headlands Pinfold Hill, Laxey, Isle of Man, IM4 7HL  
Offers In The Region Of £350,000

- Prime elevated position on sought-after Pinfold Hill, Laxey
- Three double bedrooms and flexible reception space
- Stunning sea views across Laxey Bay and Garwick Bay
- Extensive renovation required throughout
- Approx. 1,931 sq.ft of accommodation over multiple levels
- Cash buyers only due to condition of the property



Situated in one of Laxey's most sought-after and elevated positions, Headlands presents a rare opportunity to acquire a substantial property enjoying breathtaking panoramic views across Laxey Bay, Garwick Bay and the surrounding coastline. Requiring full renovation throughout, this spacious home offers exceptional potential for those looking to create a truly special coastal residence in a prime location.

Arranged over multiple levels and extending to approximately 1,931 sq.ft, the property provides flexible accommodation with generous room proportions and a layout well suited to modernisation and reconfiguration, subject to any necessary consents. The elevated setting ensures many of the principal rooms take full advantage of the stunning sea views and natural light.

The accommodation currently comprises multiple reception spaces, a kitchen area, utility/laundry room, cloakroom WC, family bathroom and three double bedrooms. Externally, the property benefits from extensive terraced patio areas which further maximise the spectacular outlook across the bay and surrounding hillsides.

Pinfold Hill remains a desirable residential location, combining peace and privacy with convenient access to the amenities of Laxey village, the promenade, harbour and scenic coastal walks. Properties in this position rarely become available, particularly those offering such significant scope for enhancement and value creation.

This is an ideal opportunity for developers, investors or purchasers seeking a renovation project in a prestigious coastal setting. Due to the condition of the property, the sale is strictly suitable for cash buyers only.

Early viewing is highly recommended to fully appreciate the location, outlook and potential on offer.

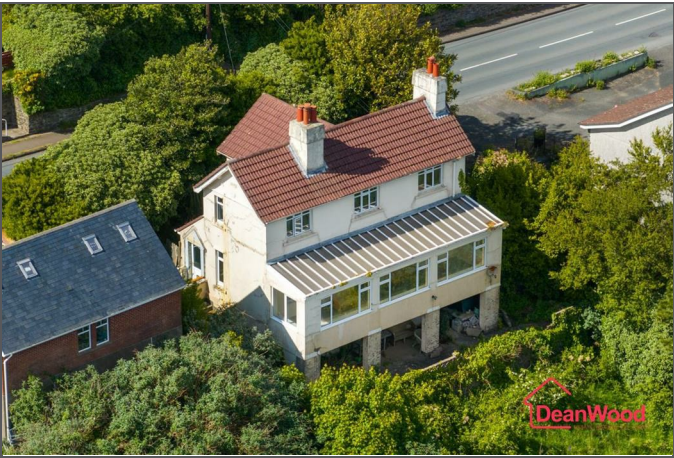












Headlands Pinfold Hill, Laxey, Isle of Man, IM4 7HL

---





**TOTAL: 1931 sq. ft**

Ground floor: 414 sq. ft, 1st floor: 950 sq. ft, 2nd floor: 567 sq. ft  
 EXCLUDED AREAS: PATIO: 461 sq. ft, PORCH: 30 sq. ft, WALLS: 168 sq. ft

Floor Plan Created By Cubicasa App. Measurements Deemed Highly Reliable But Not Guaranteed.



**DOUGLAS**

37 VICTORIA STREET  
 DOUGLAS  
 ISLE OF MAN IM1 2LF

**T** 01624 620606  
**F** 01624 677363  
**E** info@deanwood.co.im

**CASTLETOWN**

COMPTON HOUSE  
 9 CASTLE STREET CASTLETOWN  
 ISLE OF MAN IM9 1LF

**T** 01624 825995  
**F** 01624 825996  
**E** castletown@deanwood.co.im

**RAMSEY**

LEZAYRE HOUSE  
 87 PARLIAMENT STREET  
 RAMSEY ISLE OF MAN IM8 1AQ

**T** 01624 816111  
**F** 01624 816588  
**E** ramsey@deanwood.co.im

These particulars are for information purposes only. They do not constitute or form any contract nor should any statement contained herein be relied upon as a representation of fact. Neither the vendor nor DeanWood Agencies Limited ('the firm'), nor any officer or employee of the firm accept liability or responsibility for any statement contained herein. The vendor does not by these particulars, nor does the firm, nor does any officer or any employee of the firm have any authority to make or give any representation or warranty whatsoever as regards the property or otherwise. It is the sole responsibility of any person interested in the property described in these particulars to make all proper enquiries and searches to verify the description of the property and all other particulars herein.

FOR MORE PROPERTIES VISIT OUR WEBSITE @ [deanwood.im](http://deanwood.im)