

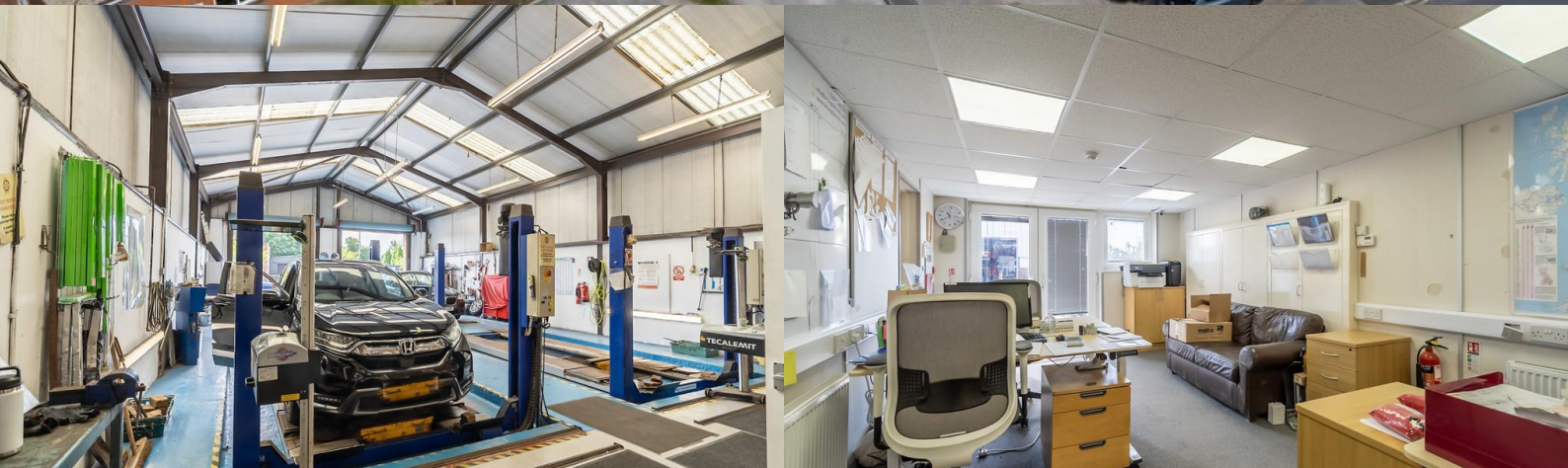


THOMLINSONS

— 1870 —

MOT Centre/Workshop, Sandbeck Way, Wetherby LS22 7BA

£42,000 pa



MOT CENTRE/WORKSHOP UNIT FOR RENT | WETHERBY TOWN CENTRE

Industrial warehouse unit with adjacent parking area situated on the established Sandbeck Industrial Estate. Unit 1 extends to 3100 sq ft (est.) with an established MOT and motor servicing garage.