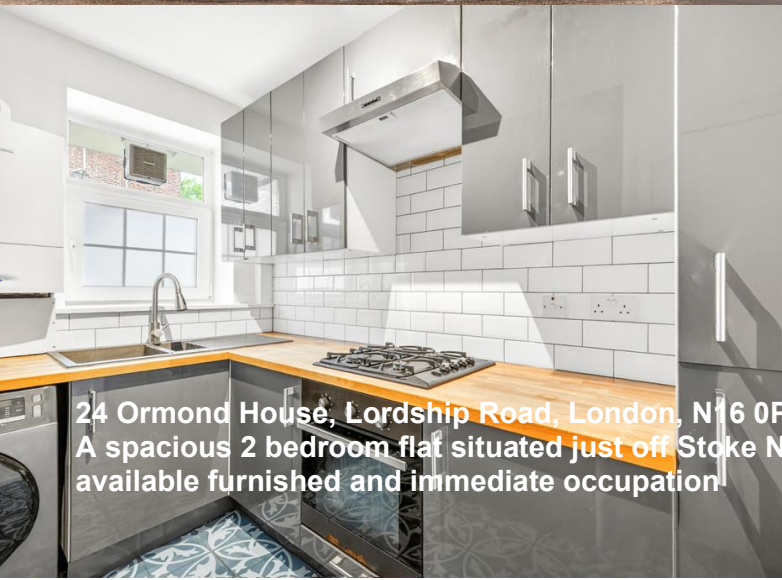


Julian Reid



24 Ormond House, Lordship Road, London, N16 0PR
A spacious 2 bedroom flat situated just off Stoke Newington Church Street and close to Clissold Park
available furnished and immediate occupation!

£2,500 per calendar month

- **2 Bedrooms**
- **Council Tax Band: C**
- **EPC Rating: C**
- **Excellent location**
- **Available immediately**

A spacious two bedroom flat arranged on the first floor of this ex local authority block located just north of Stoke Newington Church Street and very close to Clissold Park. The flat, which offers excellent accommodation in very good order has two double bedrooms, large square reception room, fitted kitchen and bathroom. Only minutes from vibrant selection of local shops, bars and restaurants and regular bus services into central London. The flat is available immediately and offered furnished.



Julian Reid

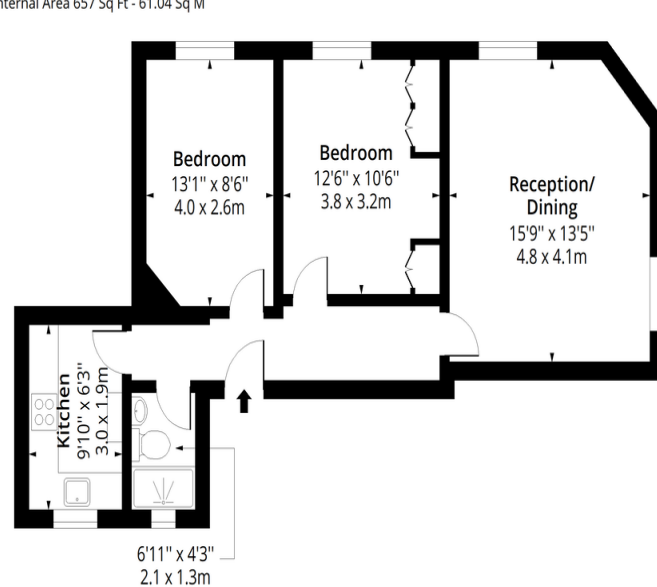
51 Stoke Newington Church Street London N16 0AR

jreid@julianreid.co.uk Fax: 020 7923 8651

+44 (0) 20 7923 8650

Ormond House N16

Approx. Gross Internal Area 657 Sq Ft - 61.04 Sq M



First Floor

Floor Area 657 Sq Ft - 61.04 Sq M



Measured according to RICS IPMS2. Floor plan is for illustrative purposes only and is not to scale. Every attempt has been made to ensure the accuracy of the floor plan shown, however all measurements, fixtures, fittings and data shown are an approximate interpretation for illustrative purposes only. 1 sq m = 10.76 sq feet.

lpaplus.com

Date: 13/6/2026

Important notice: Julian Reid, their clients and any joint agents give notice that: **1:** They are not authorized to make or give representations or warranties in relation to the property either here or elsewhere, either on their own behalf or on behalf of the client or otherwise. They assume no responsibility for any statement that may be made in these particulars. These particulars do not form part of any offer or contract and must not be relied upon as statements or representations of fact. **2:** Any areas, measurements or distances are approximate. The text, photographs and plans are for guidance only and are not necessarily comprehensive. It should not be assumed that the property has all necessary planning, building regulation or other consents and Julian Reid have not tested any services, equipment or facilities. Purchasers must satisfy themselves by inspection or otherwise.



J352 Ravensworth 01670 713330