



## Westbourne Grove Terrace, W2

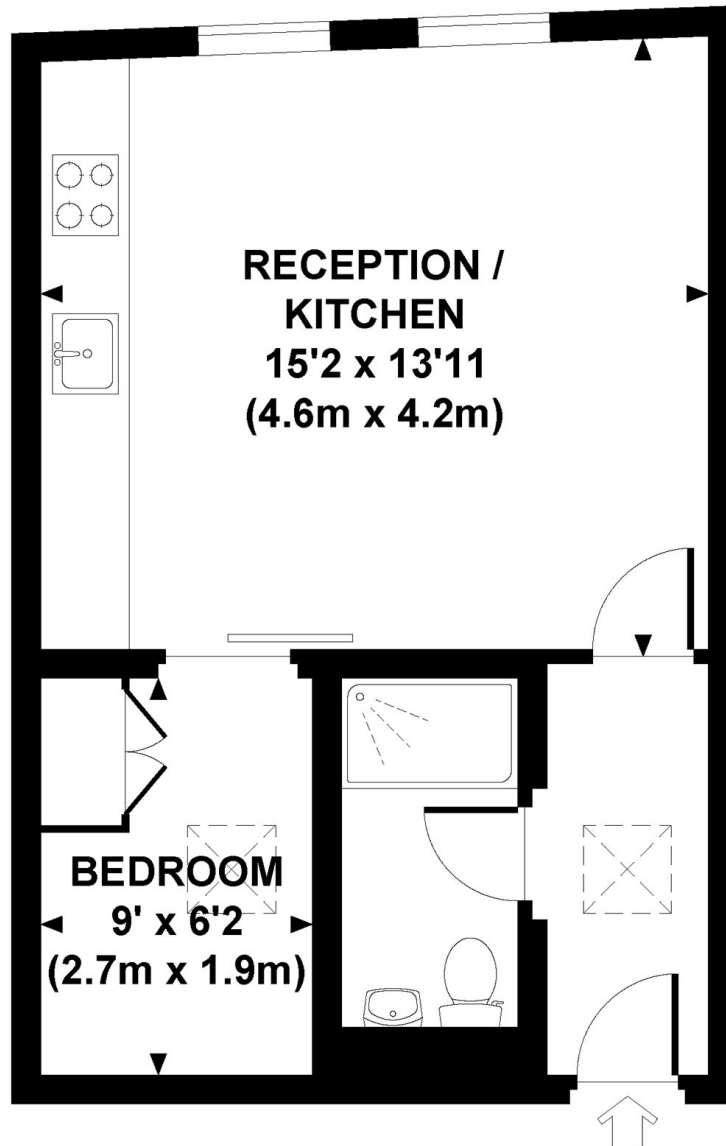
£525 per week (£2,275 pcm)

 1  1  1  EXE

- Modern Apartment
- Plenty of Natural Light
- White Wooden Floors
- Period Conversion
- Open Plan Kitchen
- Superb location

## WESTBOURNE GROVE TERRACE, W2

Approx. gross internal area  
353 Sq Ft. / 32.8 Sq M.



## FOURTH FLOOR



All measurements are approximate and for illustration purposes only as defined by the RICS Code of Measuring Practice © 2013  
Dowling Jones Design www.dowlingjones.com 020 7610 9933

### Marsh & Parsons Notting Hill

2-6 Kensington Park Road,  
London, W11 3BU  
020 7313 2890