

Hogarth Road, SW5

£2,250 Per calendar month

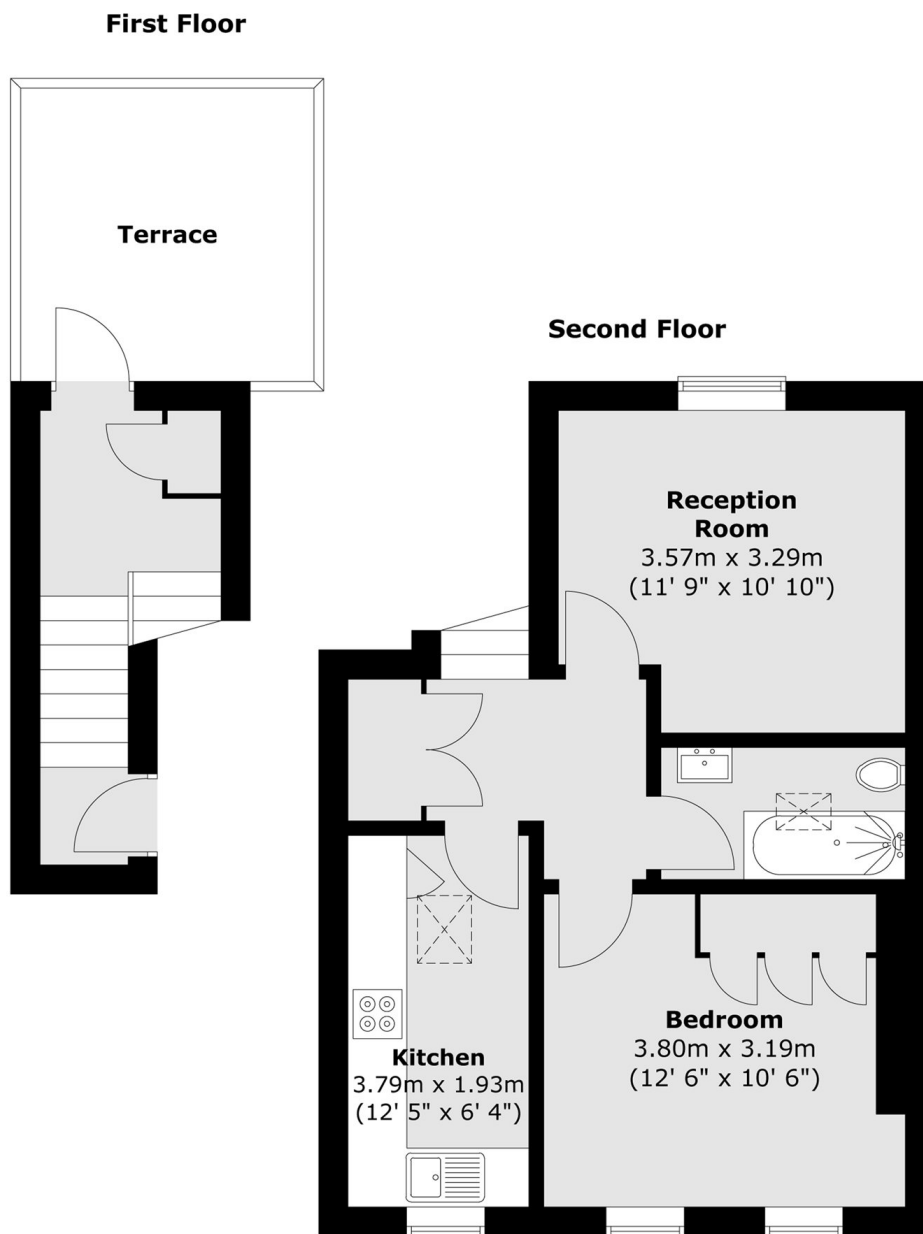
A spacious and bright one bedroom flat located on the top floor of a period conversion with its own south facing private terrace. The flat has a separate kitchen and built in storage.

Hogarth Road is perfectly located moments from Earls Court Station making commutes easy and close to Earls Court Road with shops, bars, restaurants and cafés in the area.

Features

- One Bedroom
- One Bathroom
- Separate Kitchen
- Wooden Floors
- Built In Storage
- Private Terrace

Hogarth Road, London, SW5



Total area (approx.) : 48 sq. m (517 sq. ft)
Total terrace area (approx.) : 9 sq. m (97 sq. ft)