



The Lindens, Gosfield, Halstead, CO9 1GW

welcome to

The Lindens, Gosfield, Halstead

Step inside this contemporary detached home, perfectly designed for modern family living in the highly desirable village of Gosfield. This impressive property enjoys an un-overlooked rear garden with far-reaching countryside views, offering peace, privacy, and a stunning natural backdrop.

Entrance Hall

Entrance door. Window to the front aspect. Inset spot lighting. Doors giving access to the kitchen/diner, cloakroom, home office and lounge.

Kitchen / Diner

27' 11" x 13' 1" (8.51m x 3.99m)

Windows to the front, side and rear aspects. Patio doors opening onto the garden with countryside views. Range of matching, modern wall and base units with work surfaces over. Integrated fridge/freezer, washing machine, dishwasher and bins. Island with storage and seating space. Storage cupboard. Inset spot lighting.

Cloakroom

Window to the side aspect. Suite comprising low level WC, wash hand basin with splash back tiling.

Executive Home Office

6' 11" x 6' 4" (2.11m x 1.93m)

Window to the front aspect. Fitted work station. Feature panelled wall.

Lounge

17' 7" max x 13' 1" max (5.36m max x 3.99m max)

Patio doors opening onto the rear garden and windows to the rear aspect, both overlooking rolling countryside. Bio stove set in a modern niche with a wooden mantel above. Feature panelled walls. Storage cupboard.

Landing

Stairs rising from the ground floor. Airing cupboard and doors leading to all bedrooms and family bathroom.

Bedroom One

17' 1" x 13' 1" (5.21m x 3.99m)

Window to the front aspect. Feature panelled wall. Door leading to:

En-Suite

Window to the front aspect. Modern suite comprising of a walk-in shower, wash basin and low level WC. Partly tiled walls. Heated towel rail.

Bedroom Two

14' 2" max x 11' 2" max (4.32m max x 3.40m max)

Window to the front aspect. Feature panelled wall.

Bedroom Three

12' 6" x 11' 3" (3.81m x 3.43m)

Window to the rear aspect with countryside views. Fitted wardrobes. Feature panelled wall.

Bedroom Four

10' 10" max x 9' 10" max (3.30m max x 3.00m max)

Window to the rear aspect with countryside views. Fitted wardrobes.

Family Bathroom

Window to the rear aspect. Four piece suite comprising of a bath, shower cubicle, low level WC and wash basin . Partly tiled walls.

Front Garden

Lawned area with pathway leading to the entrance. Driveway leading to the garage and carport. EV charger.

Rear Garden

Large patio area and lawn overlooking open countryside with planters and shrub borders. Personal door to the garage.





view this property online williamhbrown.co.uk/Property/HST108111



welcome to

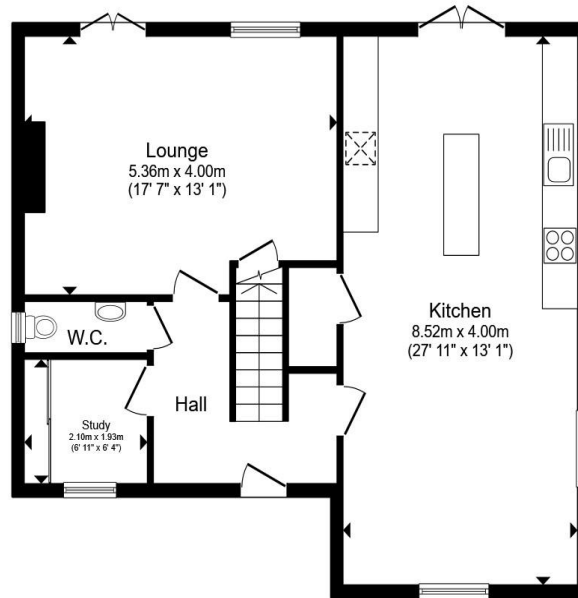
The Lindens, Gosfield, Halstead

- **Guide Price £775,000 - £800,000**
- South west facing un-overlooked garden
- Four bedroom house
- Garage & carport
- En-suite & family bathroom

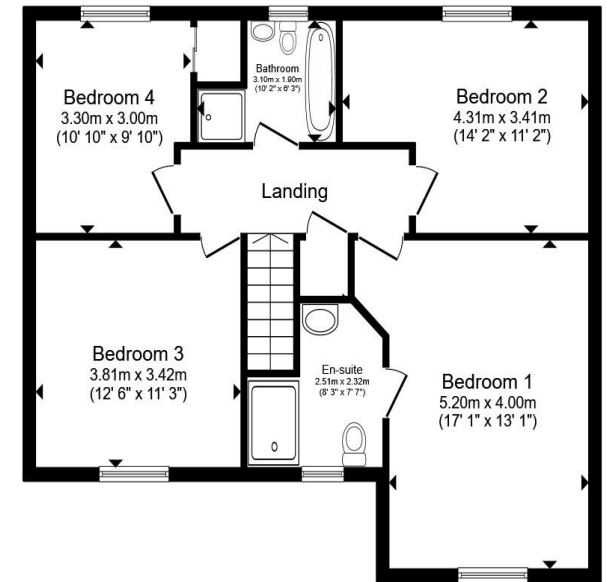
Tenure: Freehold EPC Rating: B
Council Tax Band: F

guide price

£775,000-£800,000



Ground Floor



First Floor

Total floor area 142.7 m² (1,536 sq.ft.) approx

This floor plan is for illustrative purposes only. It is not drawn to scale. Any measurements, floor areas (including any total floor area), openings and orientation are approximate. No details are guaranteed, they cannot be relied upon for any purpose and they do not form part of any agreement. No liability is taken for any error, omission or misstatement. A party must rely upon its own inspection(s). Powered by www.propertybox.io



view this property online williamhbrown.co.uk/Property/HST108111



Property Ref:
HST108111 - 0009

1. MONEY LAUNDERING REGULATIONS Intending purchasers will be asked to produce identification documentation at a later stage and we would ask for your co-operation in order that there is no delay in agreeing the sale. 2. These particulars do not constitute part or all of an offer or contract. 3. The measurements indicated are supplied for guidance only and as such must be considered incorrect. Potential buyers are advised to recheck measurements before committing to any expense. 4. We have not tested any apparatus, equipment, fixtures or services and it is in the buyers interest to check the working condition of any appliances. 5. Where an EPC, or a Home Report (Scotland only) is held for this property, it is available for inspection at the branch by appointment. If you require a printed version of a Home Report, you will need to pay a reasonable production charge reflecting printing and other costs. 6. We are not able to offer an opinion either written or verbal on the content of these reports and this must be obtained from your legal representative. 7. Whilst we take care in preparing these reports, a buyer should ensure that his/her legal representative confirms as soon as possible all matters relating to title including the extent and boundaries of the property and other important matters before exchange of contracts.

William H Brown is a trading name of Sequence (UK) Limited which is registered in England and Wales under company number 4268443, Registered Office is Cumbria House, 16-20 Hockliffe Street, Leighton Buzzard, Bedfordshire, LU7 1GN. VAT Registration Number is 500 2481 05.

william h brown



01787 472491



Halstead@williamhbrown.co.uk



30 High Street, HALSTEAD, Essex, CO9 2AF



williamhbrown.co.uk