



## FINBOROUGH ROAD, SW10

£640,000

Two bedrooms  
Two bathrooms  
Double glazing  
High ceilings  
Wood flooring  
Energy rating c

@marshandparsons  
marshandparsons.co.uk

MARSH &  
PARSONS



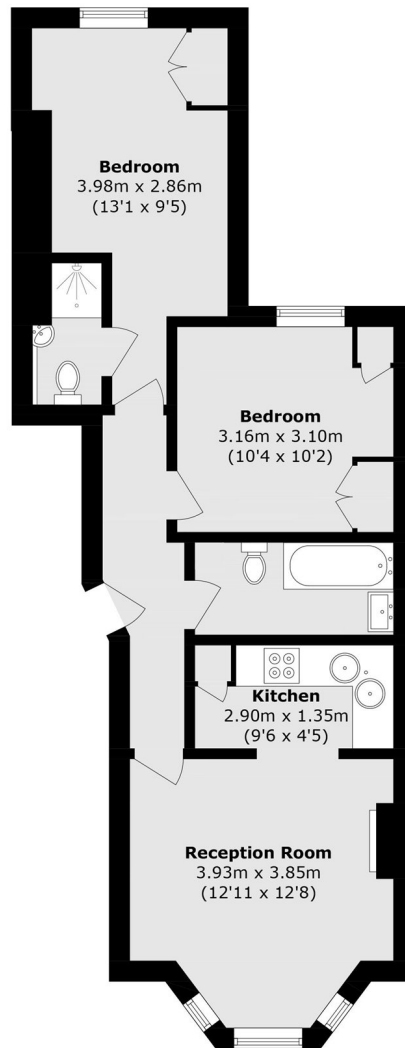
# ABOUT THE PROPERTY

Beautiful two bedroom, two bathroom raised ground floor apartment on Finborough Road, SW10, with approximately 570 sq ft of bright, modern living space. Located in a charming period conversion, it features high ceilings, wood flooring, a stylish open plan kitchen with integrated appliances, and a principal bedroom with very large built-in storage and en suite bathroom.

Situated in the heart of West Chelsea, moments from the Fulham Road, offering easy access to cafes, shops, and restaurants. Excellent connectivity with West Brompton (District Line/Overground) and Earl's Court (District/Piccadilly Lines) stations very close by. Although the flat doesn't have a garden, the residents can benefit from the



# STEP INSIDE FINBOROUGH ROAD



## Raised Ground Floor

Total area (approx.): 52.8 sq. m (568.3 sq. ft)

**Earls Court**  
020 7590 0800

Energy Rating: C We aim to make our particulars both accurate and reliable. However, they are not guaranteed; nor do they form part of an offer or contract. If you require clarification on any points then please contact us, especially if you're traveling some distance to view. Please note that appliances and heating systems have not been tested and therefore no warranties can be given as to their good working order

**MARSH &  
PARSONS**