

*Symonds
Taylor*

14 Berkeley Square, Gosforth

Newcastle Upon Tyne

Offers Over **£350,000**



14 Berkeley Square

Gosforth, Newcastle Upon Tyne

This impressive semi detached family home has been significantly improved and extended by the present owners and has ample off street parking and a lovely west facing rear lawn garden.

Accommodation comprises:

Ground floor: Hallway, cloakroom/wc, study, sitting room, open plan living/dining kitchen, utility room.

First floor: Landing, Principal bedroom, bedroom 2, bedroom 3, family bathroom.

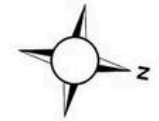
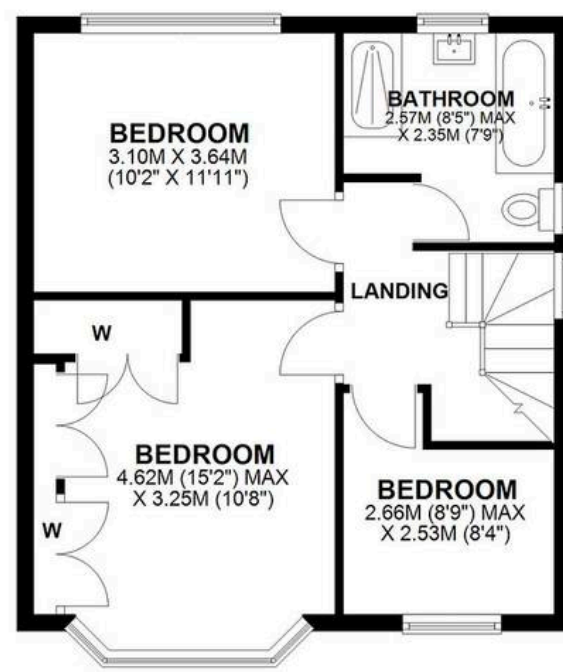
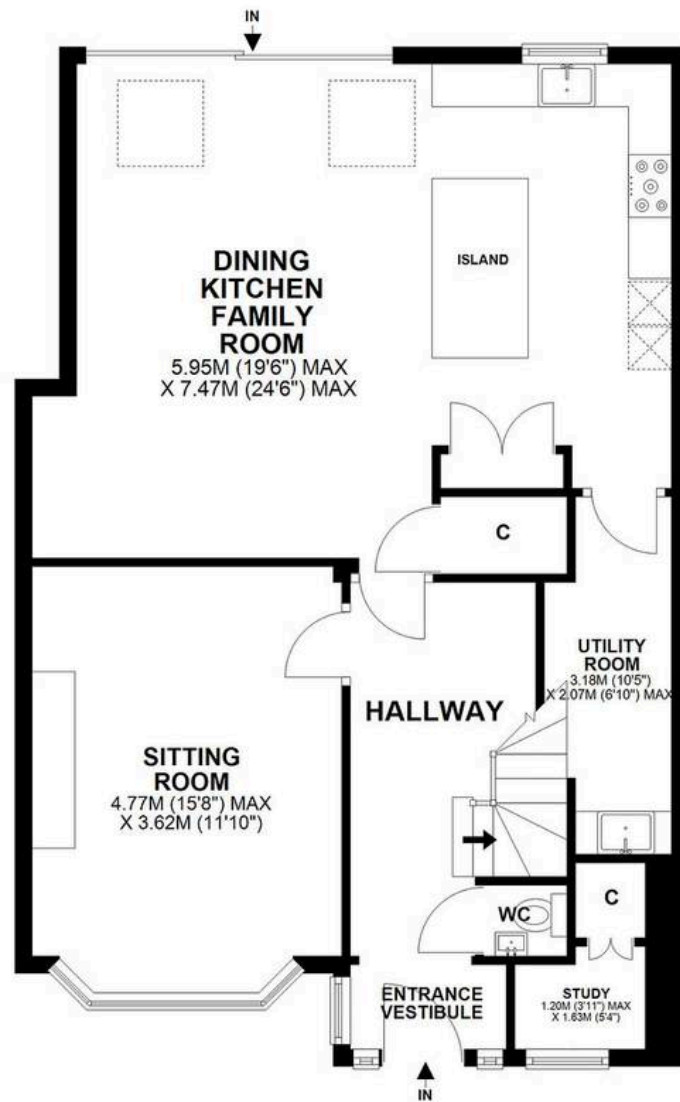
Outside: Front town garden, double driveway, off street parking, rear west facing lawn garden, paved patio.

Tenure: Freehold

EPC Energy Efficiency Rating: D

EPC Environmental Impact Rating: D





14 BERKELEY SQUARE, GOSFORTH, NE3 2JB

APPROXIMATE GROSS INTERNAL AREA 117 SQ M 1256 SQ FT - NOT TO SCALE - FOR ILLUSTRATIVE PURPOSES ONLY
All measurements and fixtures including doors and windows are approximate and should be independently verified.





Symonds Taylor

101 St. Georges Terrace, Jesmond - NE2 2DN

0191 338 9999 • hello@symondstaylor.co.uk • www.symondstaylor.co.uk

All descriptions, plans or references to condition are given in good faith only. Whilst every endeavour is made to ensure accuracy, please check with us on any points of especial importance to you.