



**\*TWO DOUBLE BEDROOM TOP FLOOR RETIREMENT FLAT\* \*21' 7" x 11' 0" (6.58m x 3.36m) LIVING ROOM\***  
**\*MODERN STYLE KITCHEN WITH SPACE FOR WASHING MACHINE!\* \*BEDROOM ONE WITH EN-SUITE BATHROOM\***  
**\*SEPARATE SHOWER ROOM\* \*SECURE RESIDENTS PARKING - NO ONWARD CHAIN!\***

**A TOP FLOOR TWO DOUBLE BEDROOM RETIREMENT FLAT** with an En-suite Bathroom and separate Shower Room. There is a modern style Kitchen with a built-in oven and hob plus a Fridge/Freezer and Washing Machine and Dryer. The Living Room has an inward opening door to a Juliette Balcony with views over Caterham. The Development has a House Manager, Communal Lounge and Kitchen, secure Residents Parking and outside a patio area with covered Pergola. **Well maintained throughout, VIEWING RECOMMENDED, NO ONWARD PROPERTY CHAIN!**

**Pegasus Court Stafford Road Caterham CR3 6TD**  
**ASKING PRICE: £135,000 LEASEHOLD**



### DIRECTIONS

From the roundabout in Caterham Valley proceed along Station Road to the mini roundabout, proceed straight ahead and then immediately right into Stafford Road, Pegasus Court is on the right-hand side, the Residents Parking is just past the block with security barrier.

### LOCATION

Pegasus Court is in a great location for the Town Centre which is a level walk within a quarter of a mile of the property. The Town Centre has a great selection of local shops, a Waitrose and Morrisons Supermarket, Restaurants and Coffee Shops. Caterham Railway Station is an end of line and has a regular service into Croydon and London and local Buses travelling north and south as well as Caterham on the Hill.

### PEGASUS COURT

The Development has a Lodge Manager for 5 days each week. The facilities include:

### **A COMMUNAL LOUNGE & KITCHEN & LAUNDRY ROOM GUEST SUITE FOR VISITORS COMMUNAL GARDENS & PATIO 24 HOUR CARELINE**

Please note that there is a walk-in lockable Storage Cupboard on the Lower Ground Floor belonging to the flat. **To qualify to reside at Pegasus Court, a resident must be over 60 years old and any second resident over 55 years old.**

### COMMUNAL ENTRANCE HALLWAY

Carpeted Communal Hallway with a Lift Service to all floors. Secure fob entry with a security entry-phone.

### ENTRANCE HALLWAY

Spacious hallway with a coved ceiling. Built in store cupboard with the electric meter and fusebox, separate airing cupboard with the hot water tank and shelf, wall mounted electric heater.

### LIVING ROOM 21' 7" x 11' 0" (6.58m x 3.36m)

Double glazed windows to the rear with an inward opening door to a Juliette Balcony with views over Caterham. Coved ceiling, feature fireplace, TV point and telephone point, two electric storage heaters, glass panelled door to the Kitchen.

### KITCHEN 9' 0" x 6' 5" (2.75m x 1.95m)

Double glazed window to the rear, modern style white kitchen with a range of built in wall and base units with matching worktops, single bowl stainless steel sink unit with a mixer tap and cupboards under. Built in electric oven and grill, built in four ring electric hob with an extractor fan above. There is also a Fridge/Freezer and a washing machine and dryer and tiled surrounds.

### BEDROOM ONE 16' 7" x 9' 1" (5.06m x 2.77m)

Double glazed window to the rear, coved ceiling, built in double wardrobe, storage heater, door to:

### EN-SUITE BATHROOM 7' 1" x 6' 4" (2.16m x 1.93m)

Modern white suite, coved ceiling, suite comprising of a panelled bath with an **AQUALISA** mixer shower fitment, vanity wash hand basin and a low flush WC. Tiled walls, electric heated towel rail and an electric fan heater, extractor fan.

### BEDROOM TWO 9' 9" x 8' 8" (2.97m x 2.64m)

Double glazed window to the rear, built in cupboard, coved ceiling and a wall mounted electric heater.

### SHOWER ROOM 5' 7" x 6' 5" (1.71m x 1.95m)

The shower room has an enclosed corner shower with an **AQUALISA** mixer shower fitment, vanity wash hand basin and a low flush WC. Tiled walled surrounds, electric towel rail and electric fan heater, extractor fan.





**OUTSIDE**

**RESIDENTS PARKING**

Accessed via a security barrier, non- allocated and a short walk from the entrance to the Communal Hallway.

**RESIDENTS GARDEN**

A path with herbaceous borders leading to a covered Pergola seating area.

**LEASEHOLD INFORMATION**

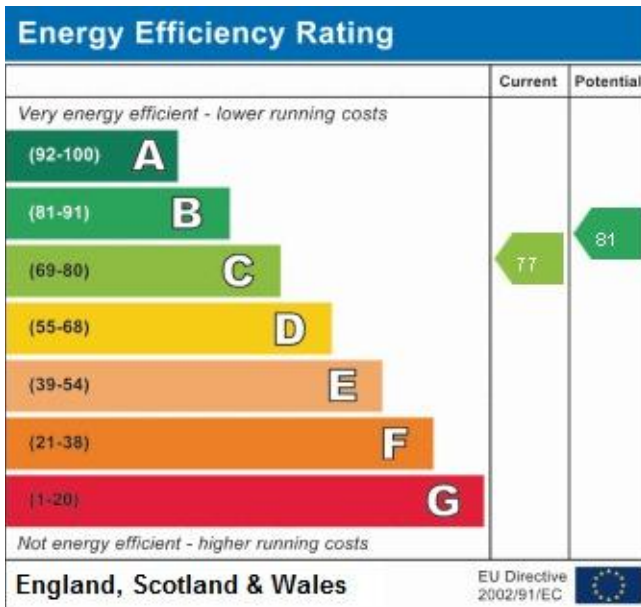
**LEASE TERM:** 125 Years from 1/7/2001

**MAINTENANCE:** £4750.00 (inc Building Insurance)

**GROUND RENT:** £349.00 pa

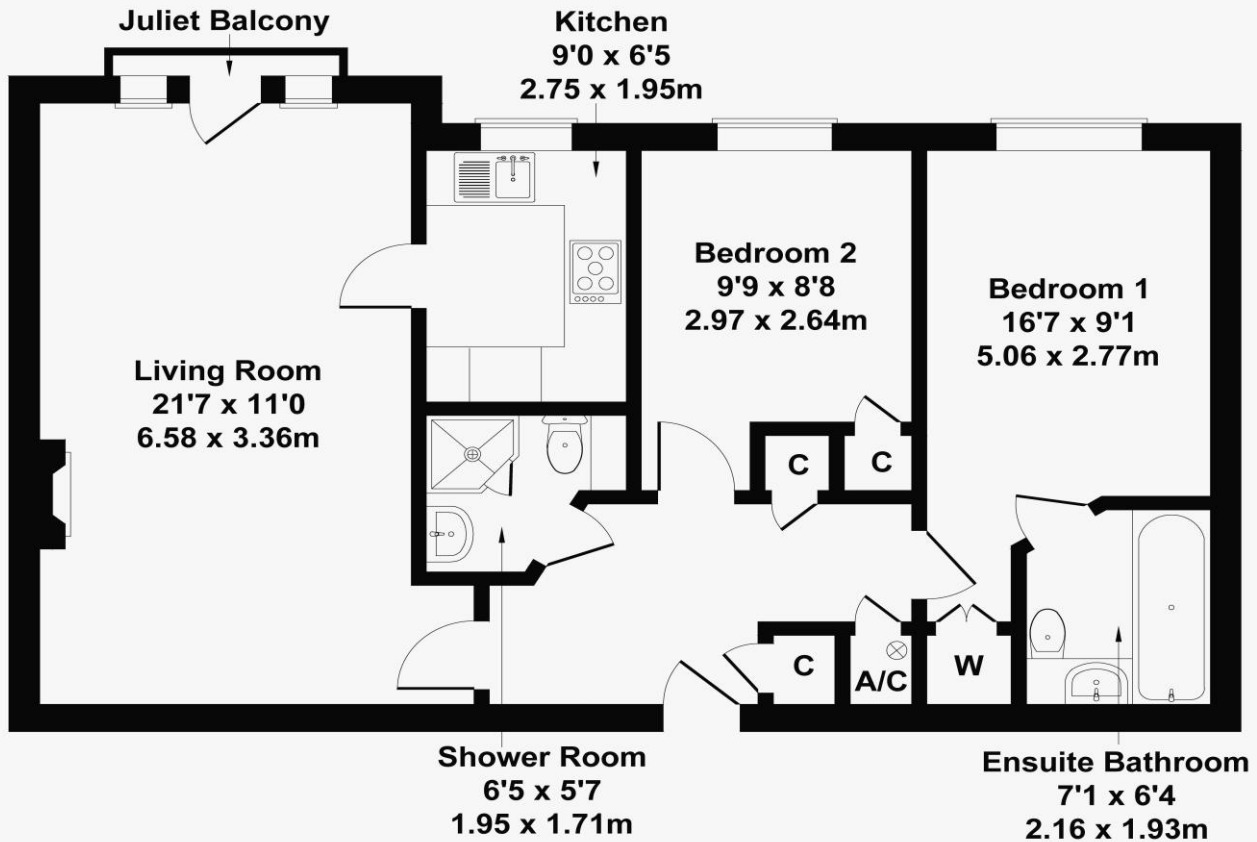
**COUNCIL TAX**

The current Council Tax Band is '**E**', via Tandridge Council. Their website address to fully confirm the Council Tax Band and amount payable is:  
<https://www.tandridge.gov.uk/Council-tax/Your-council-tax-2025-2026>.



# Pegasus Crt

Approximate Gross Internal Area  
764 sq ft - 71 sq m



## TOP FLOOR

Not to Scale. Produced by The Plan Portal 2024  
For Illustrative Purposes Only.

### DATA PROTECTION ACT 1998

Please note that all personal information provided by customers wishing to receive information and/or services from us will be processed by P A Jones Property Solutions, for the purpose of providing services associated with the business of an estate agent and for the additional purposes set out in the privacy policy but specifically excluding mailings or promotions by a third party. If you do not wish your personal information to be used for any of these purposes, please notify your estate agent.

**MONEY LAUNDERING REGULATIONS 2003 :** Intending purchasers will be asked to produce identification and proof of financial status when an offer is received. We would ask for your co-operation in order that there will be no delay in agreeing the sale.

**THE CONSUMER PROTECTION FROM UNFAIR TRADING REGULATIONS 2008:** It is a legal requirement that the property is presented accurately and in a way not to mis-lead a potential buyer in relation to the property particulars. The Agent has not tested any apparatus, equipment, fixtures and fittings or services and so cannot verify that they are in working order or fit for the purpose. A Buyer is advised to obtain verification from their Solicitor or Surveyor. References to the Tenure of a Property are based on information supplied by the Seller. The Agent has not had sight of the title documents. A Buyer is advised to obtain verification from their Solicitor. You are advised to check the availability of this property before travelling any distance to view. We have taken every precaution to ensure that these details are accurate and not misleading. If there is any point which is of particular importance to you, please contact us and we will provide any information you require. This is advisable, particularly if you intend to travel some distance to view the property. The mention of any appliances and services within these details does not imply that they are in full and efficient working order.

**PA. Jones Property Solutions, Residential Sales & Lettings**  
77-79 High Street, Caterham, Surrey CR3 5UF  
Sales: 01883 348035 Lettings: 01883 343355 Email: [info@pajonespropsolutions.co.uk](mailto:info@pajonespropsolutions.co.uk)  
[www.pajonespropsolutions.co.uk](http://www.pajonespropsolutions.co.uk)