

Star Road

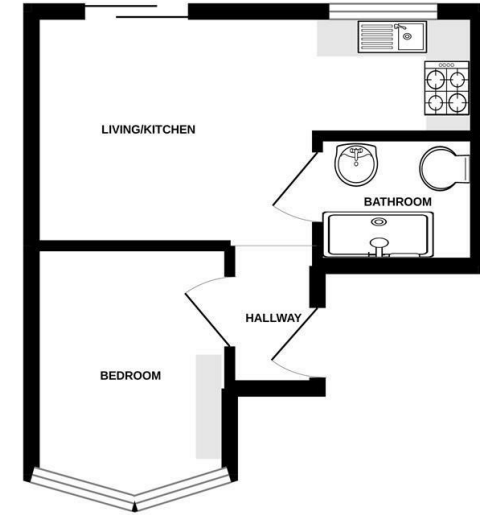
Uxbridge • Middlesex • UB10 0QH
PCM: £1,250 PCM



coopers
est 1986

GROUND FLOOR
217 sq.ft. (20.2 sq.m.) approx.

A well presented, one bedroom apartment located in a sought after part of Hillingdon offering fantastic transport links and easy access to both Uxbridge & Hayes Town Centres. Comprising of entrance hall leading to double bedroom, open plan living/dining area, fully fitted kitchen & bathroom. Also benefiting from direct access to a private garden.



TOTAL FLOOR AREA: 217 sq.ft. (20.2 sq.m.) approx.
Whilst every attempt has been made to ensure the accuracy of the floorplan contained here, measurements of doors, windows, rooms and any other items are approximate and no responsibility is taken for any error, omission or mis-statement. This plan is for illustrative purposes only and should be used as such by any prospective purchaser. The services, systems and appliances shown have not been tested and no guarantee, as to their condition or efficiency can be given.
Made with Metropix ©2022



Furnished

Direct Access To Private Garden

Close To Uxbridge Road

Easy Access to Uxbridge Town Centre

Fully Fitted Kitchen

Nearby to Motorway Links

Good Transport Links

Close to Hillingdon Hospital

Council Tax Band C

EPC Rating C

Available Date

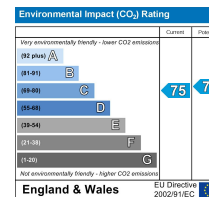
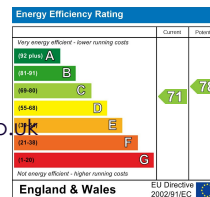
30th May 2026

01895 257 566

1 Vine Street, Uxbridge,
Middlesex, UB8 1QE

propertymanagement@coopersresidential.co.uk

CoopersResidential.co.uk



Important Notice: These particulars, whilst believed to be accurate are set out as a general outline only for guidance and do not constitute any part of an offer or contract. Intending purchasers should not rely on them as statements or representation of fact, but must satisfy themselves by inspection or otherwise has the authority to make or give any representation or warranty in respect of the property.

coopers
est 1986