



## Chalmers Way, TW1

£2,900 Per calendar month

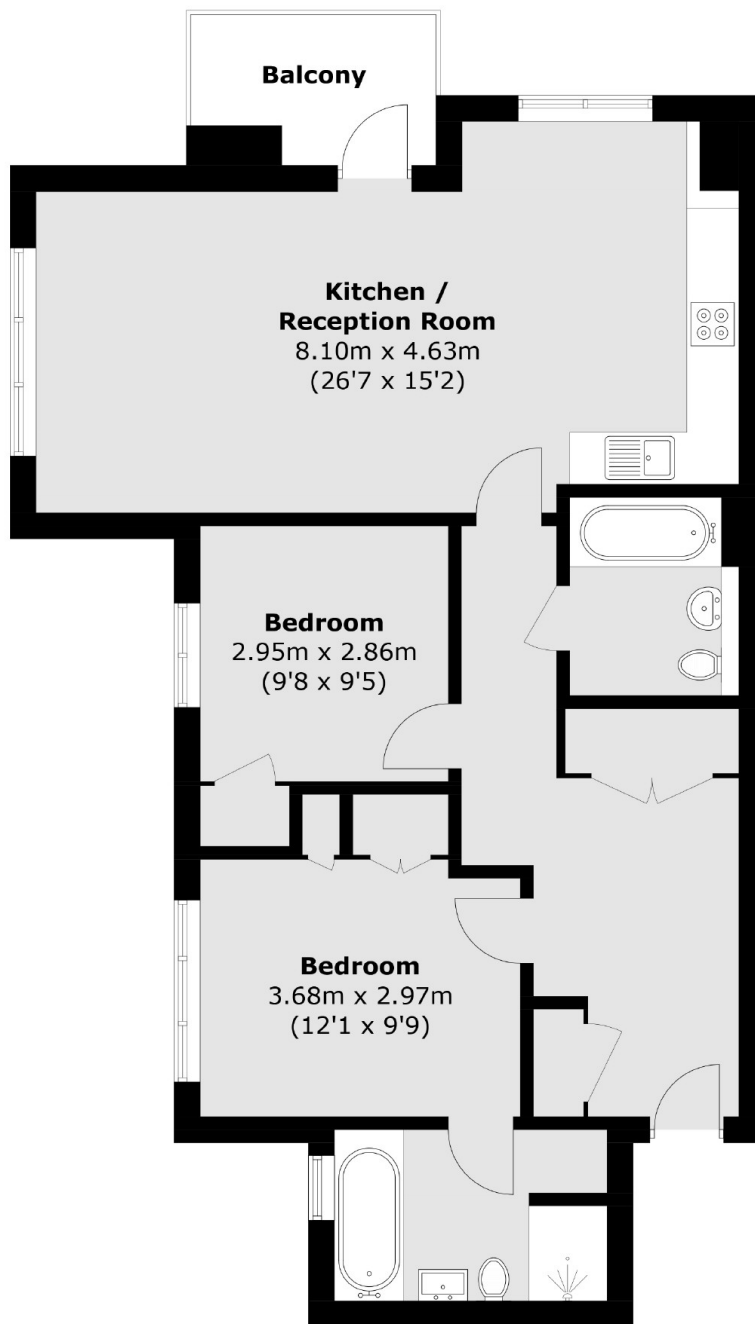
A beautifully presented two double bedroom apartment set within the sought-after Richmond Lock development, this stylish home is finished to an excellent standard throughout and features a spacious open-plan living area with a modern fitted kitchen, a large family bathroom, an en-suite to the master bedroom, a private balcony and secure underground parking.

The Richmond Lock development is ideally located for those requiring easy access in and out of London via the A316/M3. St Margarets village enjoys a wide variety of shops, cafes with both Richmond and Twickenham town centres close by.

### Features

- Exclusive Development
- Two Double Bedrooms
- Spacious Open-Plan Living
- Private Balcony
- Secure Underground Parking
- Two Bathrooms

# Chalmers Way, Twickenham, TW1



Total area (approx.): 82.9 sq. m (892.3 sq. ft)  
Balcony: 4.9 sq. m (52.7 sq. ft)