



149 Jemmett Road

Ashford, TN23 4RJ

Price £265,000

A most pleasantly appointed semi-detached house ideally located for access to the popular Victoria Park and mainline station.

The property comprises an entrance hall, sitting room, kitchen/dining room, two double bedrooms and bathroom/WC.

To the rear is a very generous garden with useful outbuildings for storage with the property also benefitting from gas central heating and double glazing. Local schools, shops and transport links are all within easy reach making this an excellent location for families and commuters.

Viewing

Please contact our Ashford Office on 01233 646411 if you wish to arrange a viewing appointment for this property or require further information.

- SEMI DETACHED HOUSE
- TWO DOUBLE BEDROOMS
- NOTABLY GENEROUS REAR GARDEN
- KITCHEN/DINING ROOM
- CLOSE TO LOCAL SCHOOLS AND AMENITIES
- ONE MILE FROM MAINLINE TRAIN STATION
- NO ONWARD CHAIN



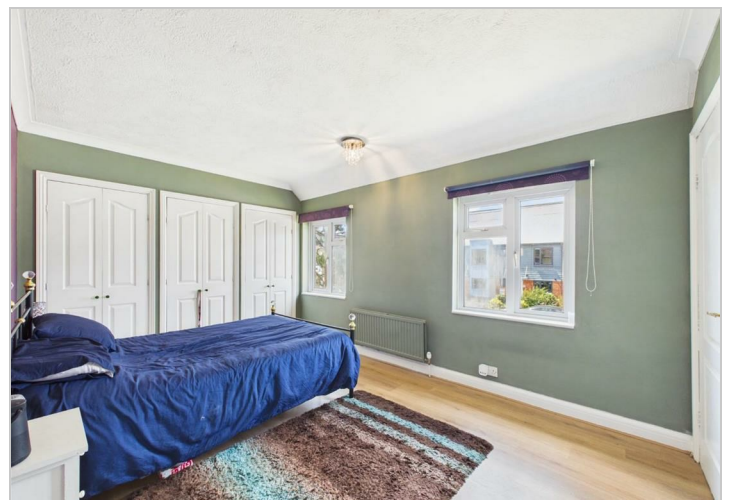
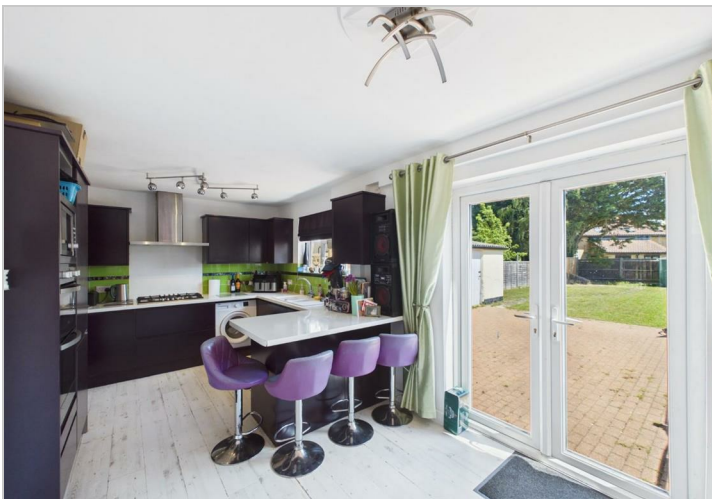
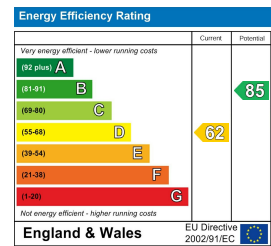
Floor Plan



Area Map



Energy Efficiency Graph



These particulars, whilst believed to be accurate are set out as a general outline only for guidance and do not constitute any part of an offer or contract. Intending purchasers should not rely on them as statements of representation of fact, but must satisfy themselves by inspection or otherwise as to their accuracy. No person in this firm's employment has the authority to make or give any representation or warranty in respect of the property.