



PORTFOLIO
from


brown & merry

Little Homestead, Weston Turville

Little Homestead, Brook End, Weston Turville, Buckinghamshire, HP22 5RQ

An individual detached village home enjoying stunning views over open countryside.



The Property

Little Homestead offers excellent accommodation over two floors. On the ground floor the entrance porch opens to a spacious reception hall with doors to all reception rooms and bedroom four. The beautifully appointed kitchen dining room is flooded with natural light and enjoys uninterrupted views over the garden. The kitchen is fitted with an extensive range of wall and base units with complementary Corian work surfaces over and built in appliances. A central island is the perfect spot for a morning coffee; from the dining area tri-fold doors lead onto a paved terrace.

A separate utility room has space and plumbing for a washing machine.

The spacious living room also enjoys uninterrupted views over the the garden and brook. Also on the ground floor is a double bedroom with large dressing room, a family bathroom and large store (approx. 12 ft by 4 ft).

The stunning timber staircase sweeps you to the first floor where you will find a spacious landing with velux windows to the rear, three spacious double bedrooms and shower room.



Outside

The property is approached by a single track drive leading to double timber gates and the entrance to Little Homestead. A spacious gravelled drive area has parking for multiple vehicles and horse-boxes, if desired. The formal garden enjoys areas of lawn and well stocked flower beds, specimen trees and borders, paved terraces are perfect for al fresco dining, there is also a timber summer house, tool shed with power and light, hobby room with power and light, a wooden log store and field shed. A paddock of just under an acre directly attached to the formal gardens.

Location

The property is well located in the heart of Weston Turville village. The village has a village shop, take away and two hair dressers which cater for most day-to-day needs and are all within walking distance.

There is also a local primary school, three public houses, a rugby club, popular golf club and reservoir for sailing and angling. There is a choice of railway stations at either Wendover or Stoke Mandeville for London Marylebone or from Tring station to London Euston. The county town of

Aylesbury is approximately three miles distant providing a good range of shopping and entertainment facilities, together with grammar schools. The A41 offers a swift connection with the M25 (Junction 20) and M1.

Education

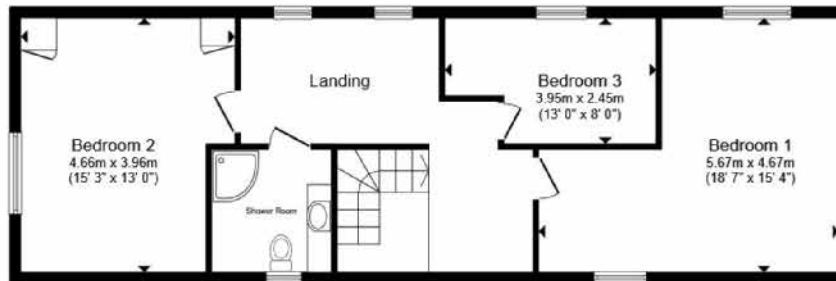
The property lies in Buckinghamshire and is eligible for the secondary school in Wendover and grammar schools in Aylesbury. Schools in the independent sector include Berkhamsted Collegiate and Tring Park School for the Performing Arts.







Ground Floor



First Floor

Total floor area 188.5 m² (2,029 sq.ft.) approx

This floor plan is for illustrative purposes only. It is not drawn to scale. Any measurements, floor areas (including any total floor area), openings and orientation are approximate. No details are guaranteed, they cannot be relied upon for any purpose and they do not form part of any agreement. No liability is taken for any error, omission or misstatement. A party must rely upon its own inspection(s). Powered by www.propertybox.io



welcome to

Little Homestead is a unique detached village home, tucked away in a secluded location. Offering light and spacious accommodation over two floors, the property has been extremely well maintained and modernised by the current owners.

If you are looking for an individual home with impressive formal gardens, paddock and far reaching views over neighbouring countryside, this is simply the home for you!

O.I.E.O

£1,000,000

- Detached Family home
- Four Double Bedrooms
- Formal Gardens and Paddock
- Secluded Location

EPC Rating: C

Council Tax Band: G

Tenure: Freehold

PORTFOLIO
from


brown & merry



To find out more information or to arrange a viewing call

01296 624444

or email Wendover@brownandmerry.co.uk
Woollerton House, 7 High Street, Wendover, Aylesbury,
Buckinghamshire HP22 6DU
brownandmerry.co.uk

1. MONEY LAUNDERING REGULATIONS Intending purchasers will be asked to produce identification documentation at a later stage and we would ask for your co-operation in order that there is no delay in agreeing the sale. 2. These particulars do not constitute part or all of an offer or contract. 3. The measurements indicated are supplied for guidance only and as such must be considered incorrect. Potential buyers are advised to recheck measurements before committing to any expense. 4. We have not tested any apparatus, equipment, fixtures or services and it is in the buyers interest to check the working condition of any appliances. 5. Where an EPC, or a Home Report (Scotland only) is held for this property, it is available for inspection at the branch by appointment. If you require a printed version of a Home Report, you will need to pay a reasonable production charge reflecting printing and other costs. 6. We are not able to offer an opinion either written or verbal on the content of these reports and this must be obtained from your legal representative. 7. Whilst we take care in preparing these reports, a buyer should ensure that his/her legal representative confirms as soon as possible all matters relating to title including the extent and boundaries of the property and other important matters before exchange of contracts.

Trading name of Sequence (UK) Limited which is registered in England and Wales under company number 4268443, Registered Office is Cumbria House, 16-20 Hockliffe Street, Leighton Buzzard, Bedfordshire, LU7 1GN. VAT Registration Number is 500 2481 05.

