

Frank Harris

— & Co. —



Grand Canal Avenue, SE16

£2,750 pcm

Located in the Royal Victoria Gardens development, this perfectly presented three bedroom apartment split over two floors spanning over 1000 sq ft in size. The development features concierge service and the option of access to the on-site GYM.

This apartment offers plenty of space for a growing family, a couple or two sharers using the third bedroom as a work from home office.

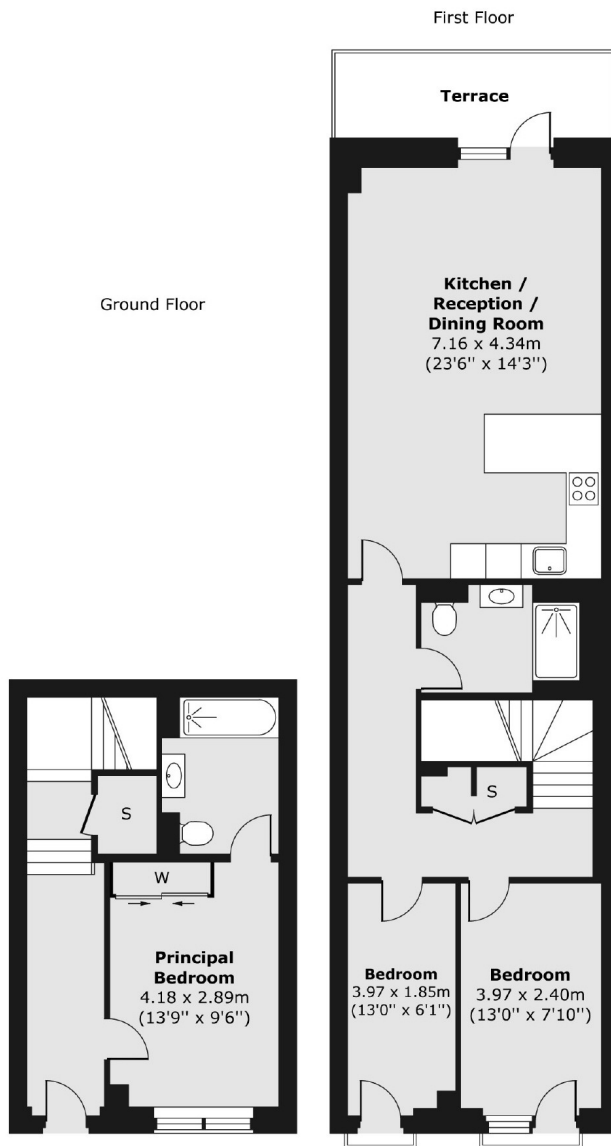


Located among the new builds of Royal Victoria Gardens, you are perfectly situated with Surrey Quays Overground Station 0.6 miles or access to Canada Water Station for the Jubilee Line 1 mile away. The popular Surrey Quays Shopping Centre offers a variety of places to eat, shop and drink.

- Three Bedrooms • Two Bathrooms • Split Level •
- Private Patio • Concierge • Residents Gym •



Frank Harris & Co.



Total area (approx.) 100.32 sq. m (1,080 sq. ft)
Terrace area (approx.) 7.18 sq. m (77 sq. ft)

Frank Harris & Co. Tower Bridge
205 Tooley Street, London, SE1
2JX
020 7234 0880
towerbridgelettings@frankharris.co.uk

Energy Rating: C. We aim to make our particulars both accurate and reliable. However they are not guaranteed; nor do they form part of an offer or contract. If you require clarification on any points then please contact us, especially if you're traveling some distance to view. Please note that appliances and heating systems have not been tested and therefore no warranties can be given as to their good working order.

