

Sanderstead Road, E10

£3,300 Per calendar month

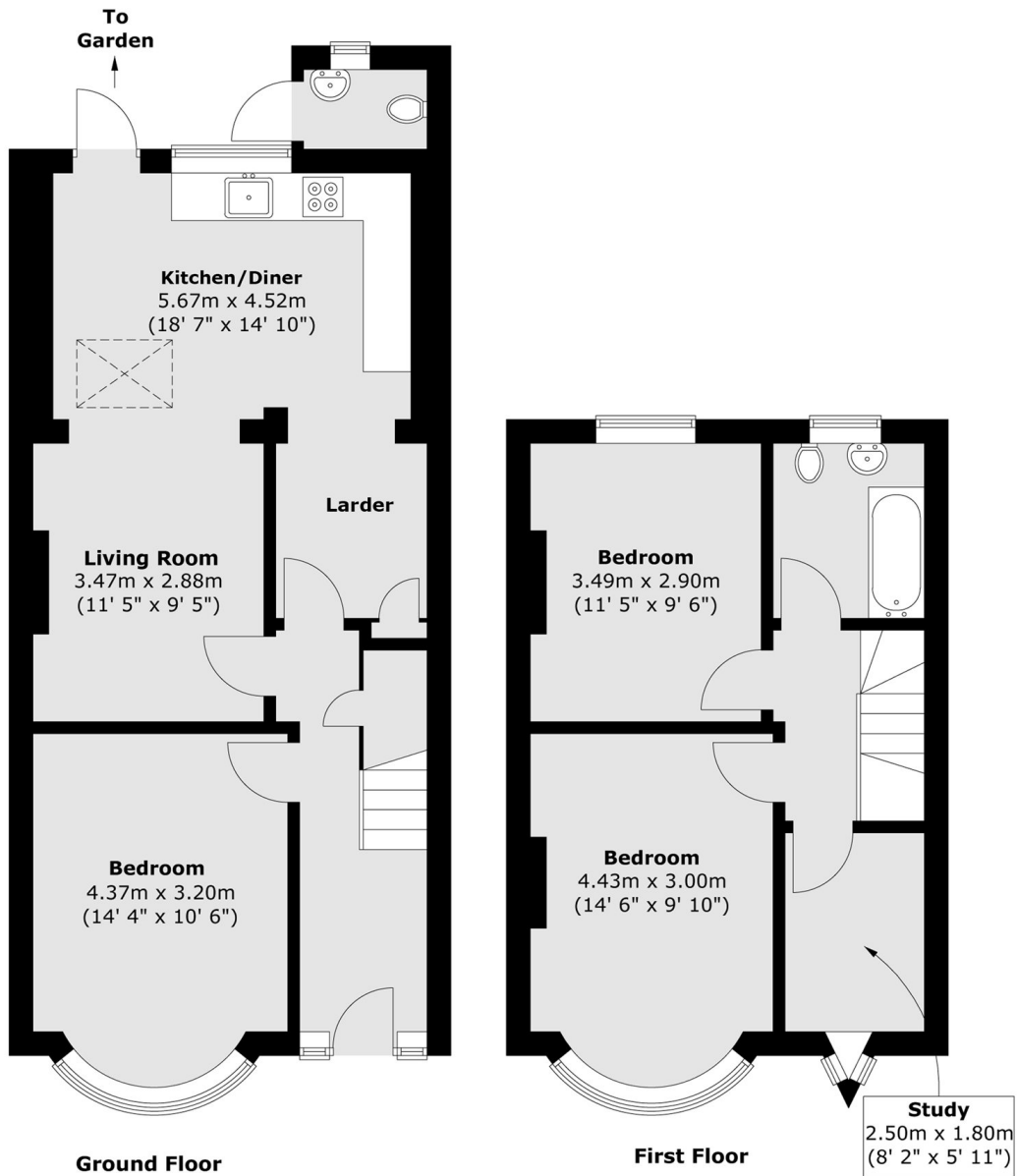
A recently refurbished modern house situated in Sanderstead Road, a short walking distance to Lea Bridge Road station. This exceptionally designed contemporary home has a bright open plan kitchen/ diner with white goods included. Offers excellent space with three double bedrooms and study room, family bathroom and downstairs WC. And a great size rear garden. Perfect for sharers, HMO license in place.

The property is ideally located in the highly sought after area of Leyton. Residents can enjoy a huge selection of local pubs, shops, cafe's and restaurants. Local cinema, ice- skating rink and horse riding centre. A short walking distance to Walthamstow Marshes and overground station Lea Bridge Road.

Features

Perfect for Sharers
Three Double Bedrooms
Family Bathrooms
Ideal Location
Modern Throughout
Refurbished

Sanderstead Road, London, E10



Total area (approx.) : 91.2 sq. m (982 sq. ft)
Total w.c area (approx.) : 1.5 sq. m (16 sq. ft)