

MUNDAY'S

Wells Park Road, Upper Sydenham

£750,000



Charming, artist-owned two bedroom semi-detached home named 'Wells Cottage', with two independent receptions and direct plus gated side access to a well-stocked garden, within Halifax Street Conservation Area.

Find it in leafy Upper Sydenham/Forest Hill borderland, close to strong shops and transport links. Bus routes local to you include the nippy no. 176 to Tottenham Court Road, or you can walk to either Sydenham (~10 minutes) or Forest Hill (~15 minutes) stations, for regular rail plus Windrush line services.

Munday's Estate Agents Ltd.
2 Mary Boast Walk
London SE5 8SP
020 3318 8900

www.mundays.com

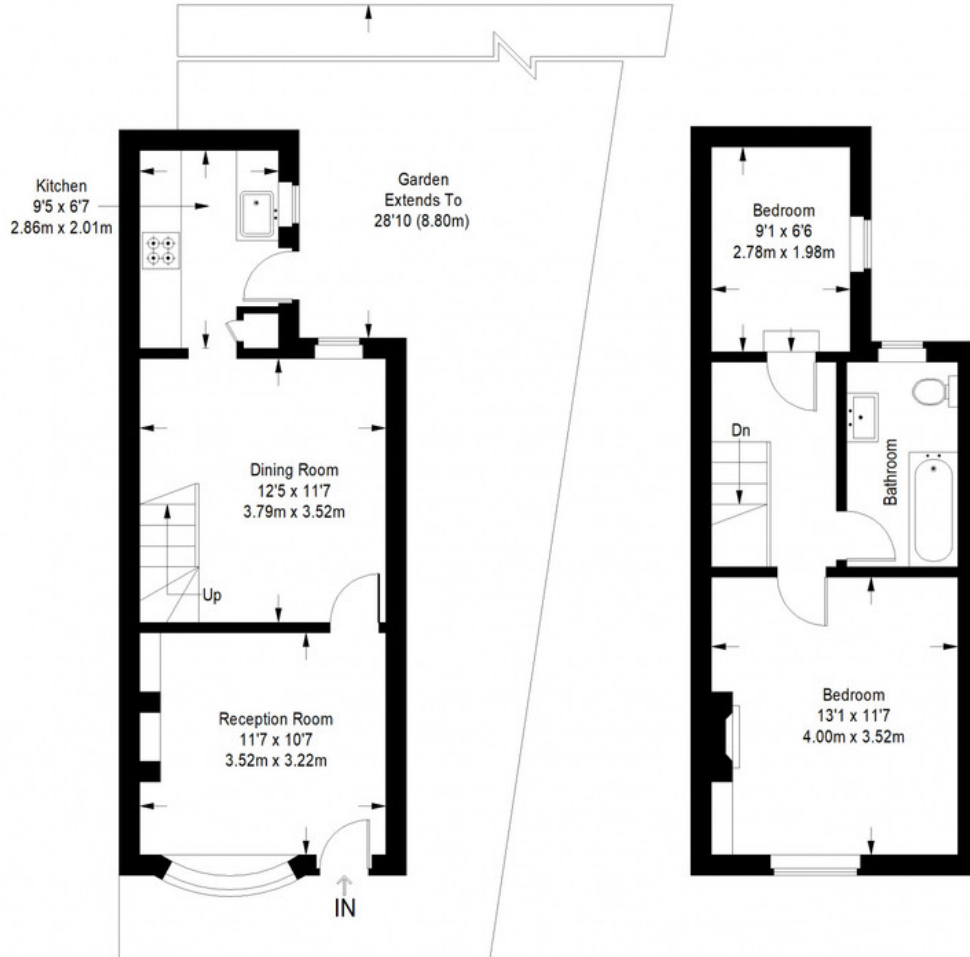
MUNDAY'S



Munday's Estate Agents Ltd.
2 Mary Boast Walk
London SE5 8SP
020 3318 8900

www.mundays.com

Wells Cottage



Ground Floor = 346 sq ft

First Floor = 334 sq ft

Approximate Gross Internal Area
 GROUND FLOOR = 346 sq ft / 32.14 sq m
 FIRST FLOOR = 334 sq ft / 31.03 sq m
 Total = 680 sq ft / 63.17 sq m



This plan is for layout guidance only. Not drawn to scale unless stated. Windows and door openings are approximate. Whilst every care is taken in the preparation of this plan, please check all dimensions, shapes and compass bearings before making any decisions reliant upon them. (ID357409)