



Guide Price
£325,000

Freehold

3x  1x  1x 

**Lavender Hill,
Tonbridge, Kent, TN9**

Wards
Helping you move forwards



Main features

- Three Bedroom End OF Terrace
- Conveniently Located For The Town Centre & Transport Links
- Front & Rear Gardens
- Kitchen/Breakfast Room
- Attic Room

Accommodation

GROUND FLOOR

Lounge: 10'11 x 10'4 (3.33m x 3.15m)
 Kitchen/Diner: 10'5 x 10'4 (3.18m x 3.15m)
 Bathroom: 6'0 x 5'6 (1.83m x 1.68m)

FIRST FLOOR

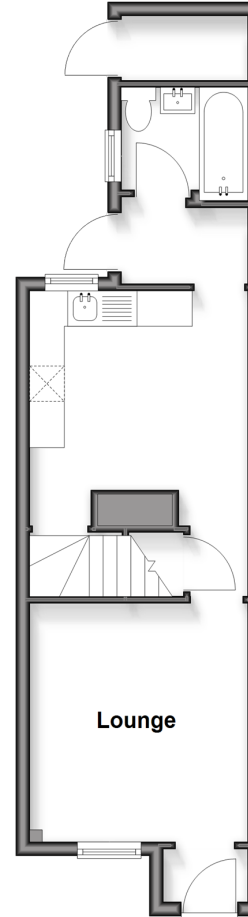
Bedroom 1: 10'10 x 10'5 (3.30m x 3.18m)
 Bedroom 2: 10'5 x 7'10 (3.18m x 2.39m)
 Bedroom 3 (off Bedroom 2): 7'11 x 6'3 (2.41m x 1.91m)

SECOND FLOOR

Loft Room: 10'3 x 8'10 (3.13m x 2.69m)

Split Level Ground Floor

Approx. 32.6 sq. metres (351.0 sq. feet)



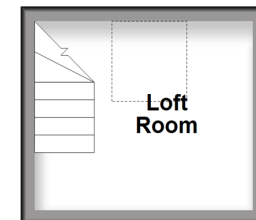
Split Level First Floor

Approx. 29.7 sq. metres (320.0 sq. feet)



Second Floor

Approx. 8.4 sq. metres (90.3 sq. feet)



Call Tonbridge - 01732 770755 ■ wardsofkennt.co.uk



14125439/20260330/HJ20/HG