



Hartfield Court, Collett Road, Ware SG12 7LT

£160,000



2



1

Taylor Phelps

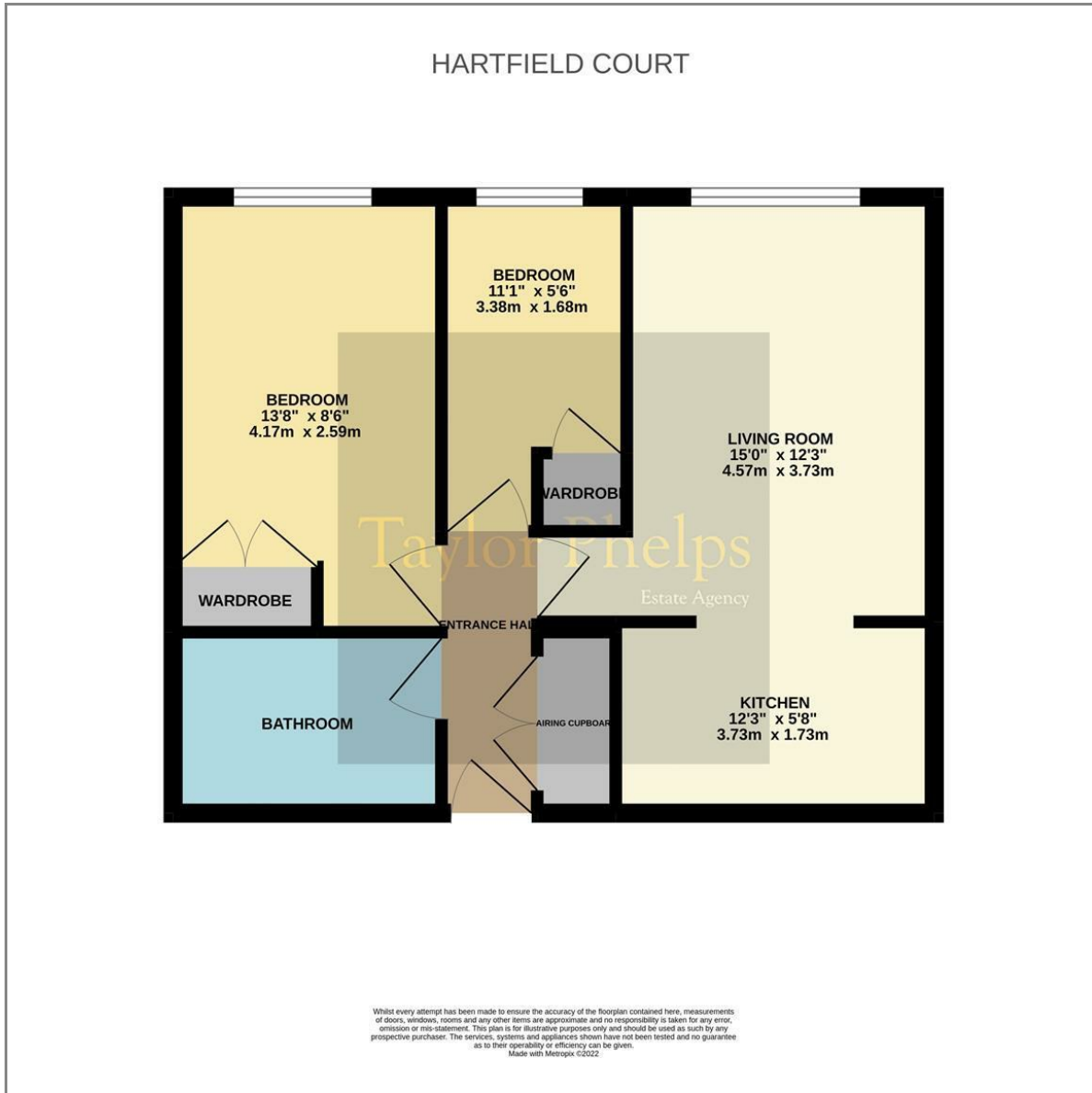
Estate Agency

Taylor Phelps are pleased to offer this two bedroom retirement apartment situated within the ever popular and sought after Hartfield Court development! This property is located on the upper / second floor and is available chain free. Hartfield Court itself has a range of wonderful facilities to include a spacious residents lounge with tea and coffee kitchen, a guest suite, security entry system throughout the building, residents laundry room, ample parking and a lift to all floors! Extended 155 year lease.

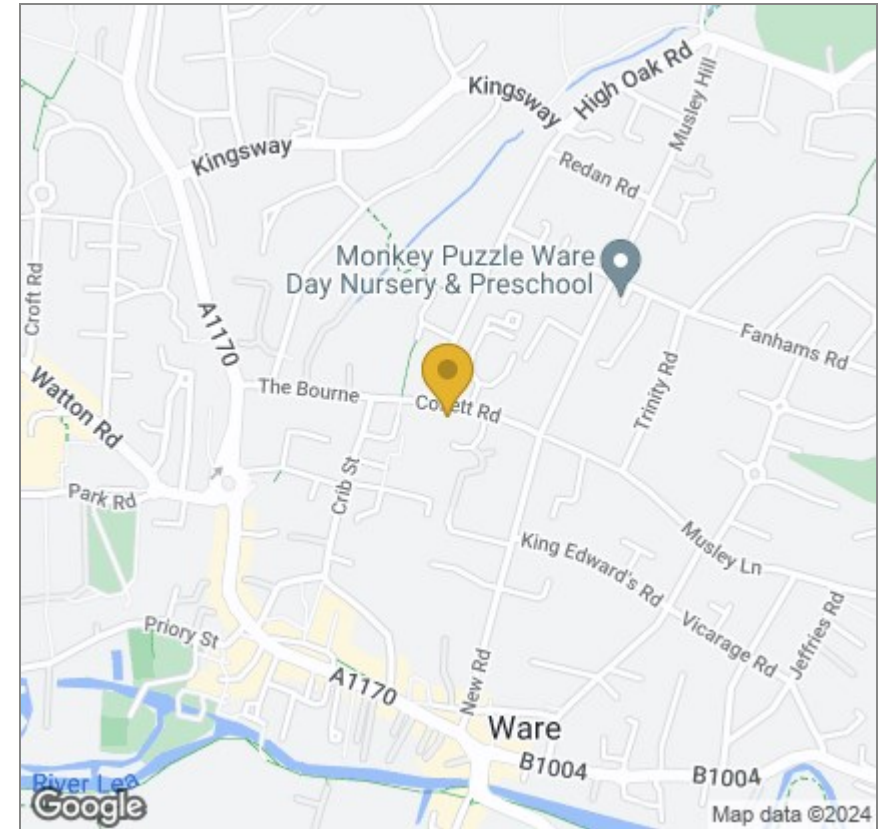




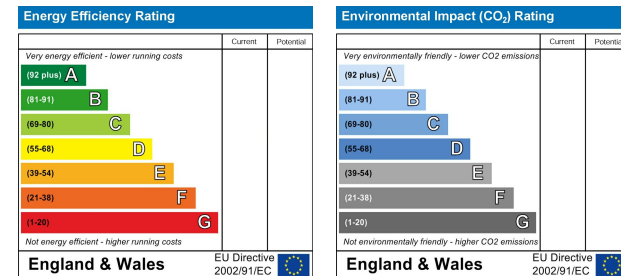
Floor Plan



Area Map



Energy Efficiency Graph



These particulars, whilst believed to be accurate are set out as a general outline only for guidance and do not constitute any part of an offer or contract. Intending purchasers should not rely on them as statements of representation of fact, but must satisfy themselves by inspection or otherwise as to their accuracy. No person in this firm's employment has the authority to make or give any representation or warranty in respect of the property.