



Sheen Road, TW9

£1,745 Per calendar month

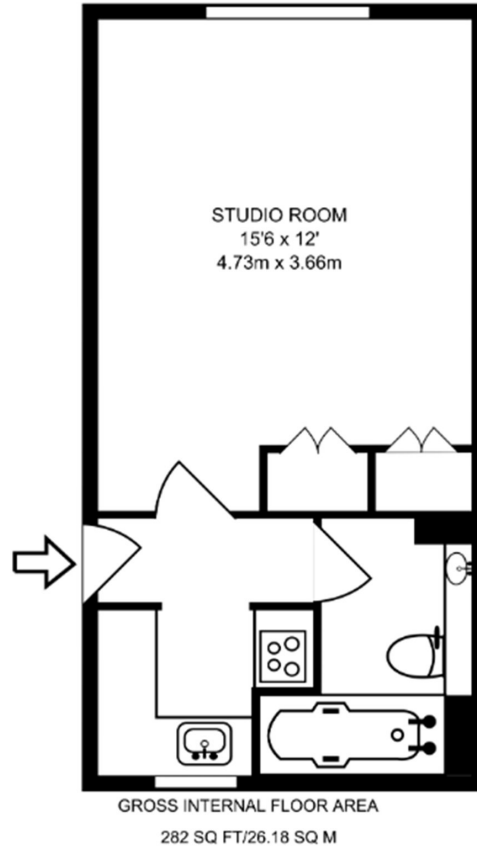
A beautifully presented furnished apartment in the popular Lichfield Court Development. The property has been finished to a high standard throughout with a modern kitchen, bathroom. Further benefits include: Parking, 24/7 security, pet friendly and daily refuse collection.

Lichfield Court is in positioned in heart of Richmond's bustling town centre but the development has a tranquil feel to it. Conveniently only 0.4 miles from Richmond Station and Richmond Town Centre.

Features

- High Spec
- Projector Installed
- Central Location
- Furnished
- Wooden Flooring Throughout
- Modern Bathroom

Sheen Road, Richmond, TW9



This plan has been drawn for illustrative and identification purposes only.