



Kingston Road, KT3

£125,000

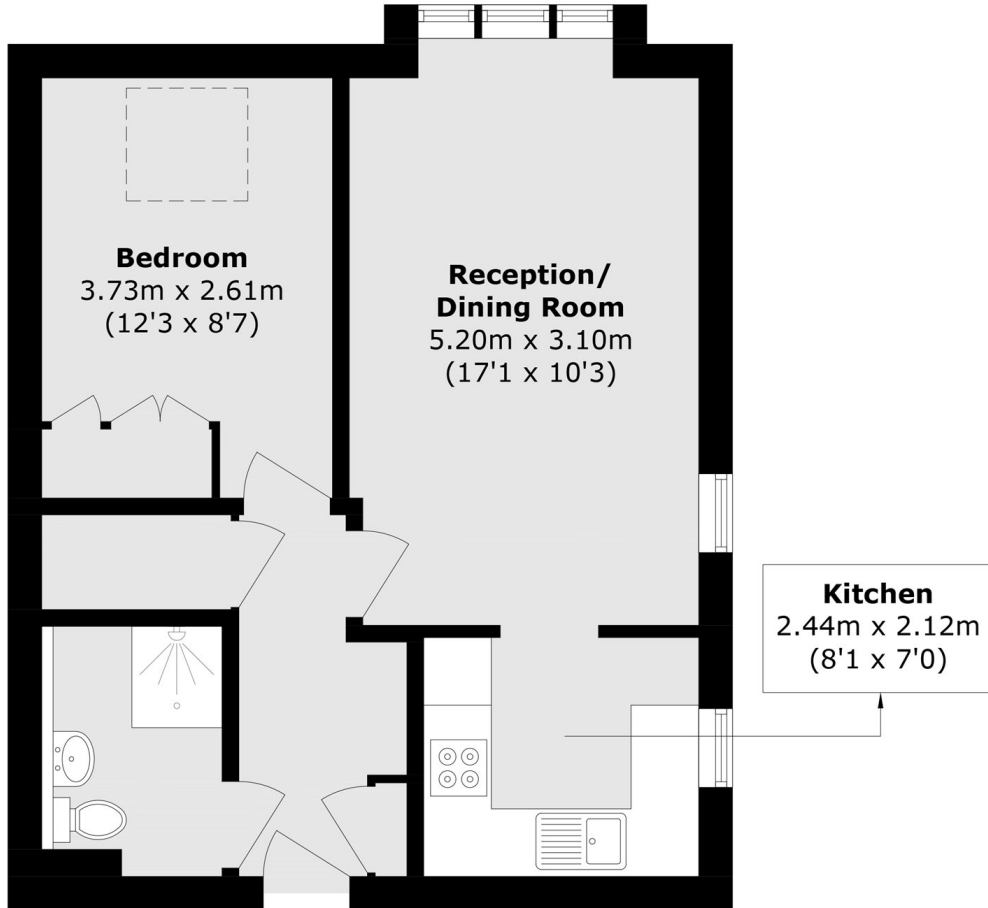
A charming and very well presented one double bedroom top floor apartment, the property offers plenty of light and space throughout with stunning views in the heart of New Malden. It is being sold chain free and comes with parking and a lovely communal garden

Kingston Lodge is set off Kingston Road. There is a buzzing high street a short distance away with plenty of restaurants and cafes, as well as New Malden Station close by and plenty of bus routes into the city.

Features

- Over 60s Development
- One Double Bedroom
- Top Floor
- Private Parking
- Great Location
- Chain Free

Kingston Road, New Malden, KT3



Total area (approx.): 41.9 sq. m (451.4 sq. ft)