



3 Weatherall Close, Bishops Waltham - SO32 1QR

Guide Price £850,000

WHITE & GUARD

3 Weatherall Close

Bishops Waltham, Southampton

INTRODUCTION

Positioned within an exclusive residential setting, this exceptional neo-Georgian four-bedroom detached home represents the perfect fusion of timeless architectural elegance and contemporary family living. Constructed by the highly regarded Bargate Homes, the property has been thoughtfully designed to deliver both style and practicality in equal measure.

Ideal for discerning buyers seeking a refined village lifestyle without compromising on modern comforts, this home will particularly appeal to growing families, professional couples and those who love to entertain. From its striking façade to its beautifully curated interiors, underfloor heating on the ground floor, solar panels and landscaped garden, every element has been crafted to create a home of lasting quality and effortless sophistication.

LOCATION

Nestled in the heart of Bishop's Waltham, this property enjoys all the charm of a historic market town combined with excellent connectivity. Known for its welcoming community and relaxed pace of life, Bishop's Waltham offers a delightful blend of independent boutiques, cafés, restaurants and everyday amenities. Surrounded by picturesque countryside and on the edge of the South Downs National Park, the area is perfect for those who enjoy walking, cycling and outdoor pursuits. The town is steeped in heritage, with landmarks such as the impressive Bishop's Waltham Palace adding to its unique character. For commuters, the location is superb, providing convenient access to the M3 and A3, while the cities of Winchester, Southampton and Portsmouth are all within a comfortable 30-minute drive.





INSIDE

Upon entering, you are welcomed by a spacious and elegant hallway, where a feature staircase sets the tone for the quality found throughout. The heart of the home is the stunning open-plan kitchen, dining and family space, beautifully appointed with integrated appliances, granite work tops, a contemporary central island and ample room for both relaxed living and entertaining. Flooded with natural light, this space seamlessly connects to the garden, creating an effortless indoor-outdoor lifestyle.

A generous separate living room provides a more formal setting for relaxation, while the versatile snug/study offers flexibility as a home office, playroom or additional lounge. Practicality is equally considered, dedicated utility room and a stylish ground floor WC completing the layout.

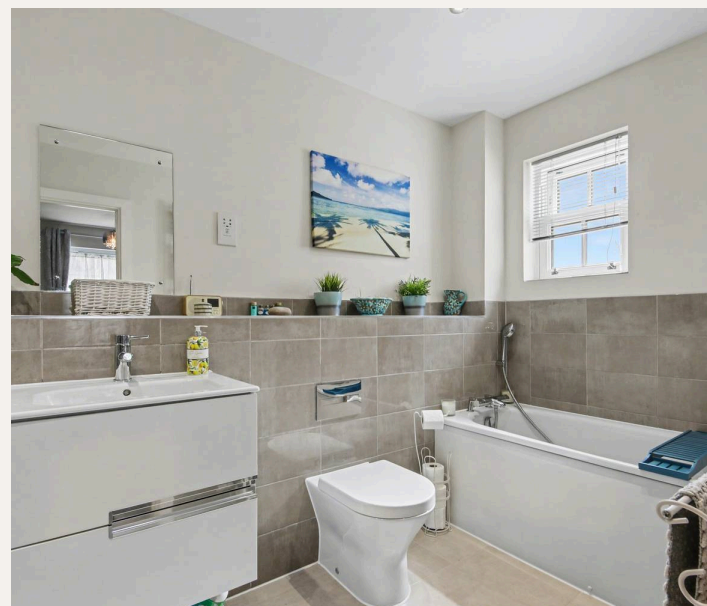
Upstairs, the property continues to impress with four well-proportioned double bedrooms. The principal suite offers a luxurious retreat, complete with a sleek en-suite bathroom, while a second bedroom also benefits from its own en-suite, ideal for guests or older children. A contemporary family bathroom serves the remaining bedrooms, all finished to a high standard with a cohesive, modern aesthetic throughout.

OUTSIDE

Externally, the property enjoys a double-width private driveway leading to an adjoining garage, offering both convenience and ample parking. To the front, a peaceful woodland backdrop enhances the sense of privacy and tranquillity.

The rear garden has been thoughtfully transformed into a beautifully landscaped sanctuary. Designed with low maintenance in mind, it features a raised seating area, patio and carefully selected planting that provides colour, texture and year-round interest. This inviting outdoor space is perfectly suited to alfresco dining, entertaining guests or simply unwinding in a serene setting.

Altogether, this is a home that delivers on every level, style, space, location and lifestyle, making it a truly outstanding opportunity in one of Hampshire's most desirable village settings.



SERVICES:

Gas, water, electricity and mains drainage are connected. Please note that none of the services or appliances have been tested by White & Guard.

Broadband : Full Fibre Broadband Up to 115 Mbps upload speed Up to 1600 Mbps download speed. This is based on information provided by Openreach.

Estate Service Charge : £382 divided into two payments a year, £191 every 6 months

- FOUR BEDROOM DETACHED HOME
- OPEN PLAN KITCHEN DINING FAMILY ROOM
- TWO RECEPTION ROOMS
- TWO ENSUITES AND FAMILY BATHROOM
- LARGE DRIVEWAY PROVIDING AMPLE PARKING WITH EV CHARGING POINT.
- GARAGE WITH LOFT STORAGE SPACE
- LANDSCAPED REAR GARDEN
- WINCHESTER COUNCIL BAND F
- FREEHOLD
- EPC RATING B

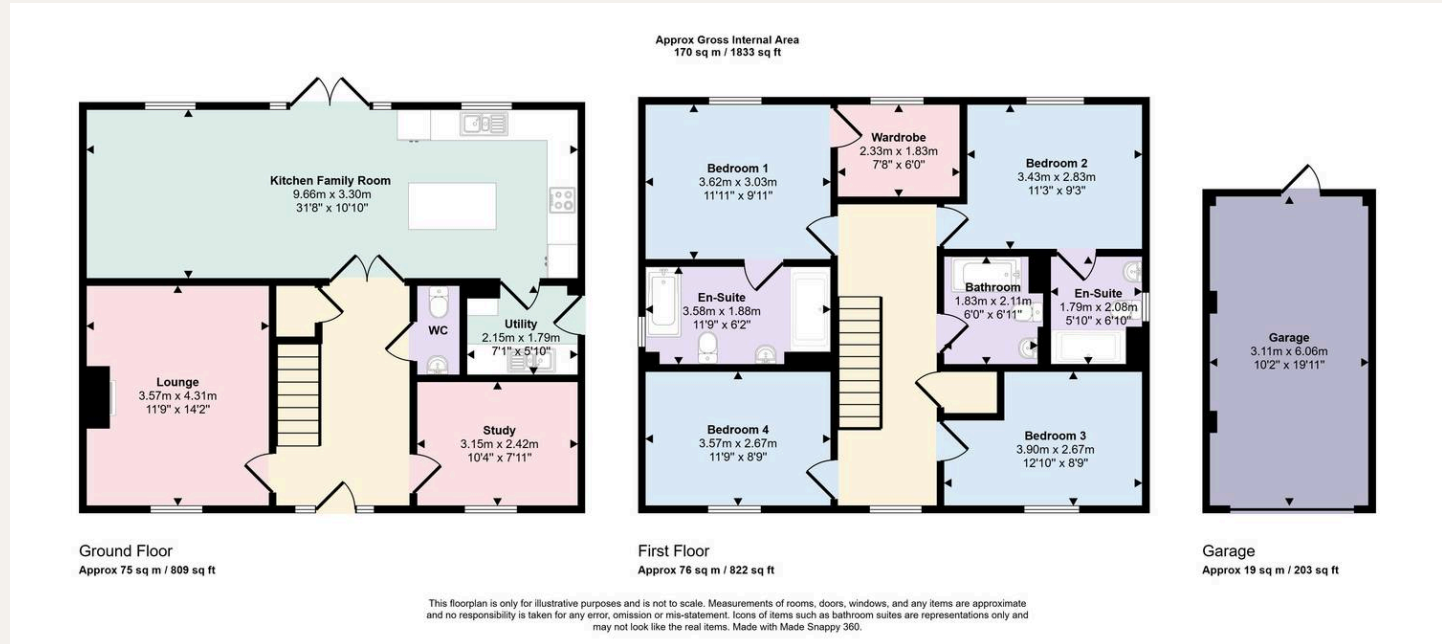
ANTI-MONEY LAUNDERING REGULATIONS

Buyers: If you have an offer accepted on a property through White & Guard, under Anti-Money Laundering Regulations (2017), we are required by law to conduct Anti-Money Laundering Checks. There is a charge of £30 + VAT per applicant.

Sellers: Upon receipt of instructions to act in the selling of your home, under Anti-Money Laundering Regulations (2017), we are required by law to conduct Anti-Money Laundering Checks. There is a charge of £30 + VAT per owner.

DISCLAIMER

These particulars are not to form part of a Sale Contract owing to the possibility or errors and/or omissions. Prospective purchasers should therefore satisfy themselves by inspection or otherwise as to their correctness. All fixtures, fittings, chattels and other items not mentioned are specifically excluded, unless otherwise agreed within the Sale Contract documentaries or left in situ and gratis upon completion. The property is also sold subject to rights of way, public footpaths, easements, wayleaves, covenants and any other matters which may affect the legal title. The Agent has not formally verified the property's structural integrity, ownership, tenure, acreages, estimated square footage, planning/building regulations status or the availability/operation of services and/or appliances. Therefore, prospective purchasers are advised to seek validation of all the above matters prior to expressing any formal intent to purchase.



T: 01489 893946

Brook House, Brook Street, Bishops Waltham,
Southampton, Hampshire, SO32 1AX

E: bishopswaltham@whiteandguard.com

W: whiteandguard.com

