



## HECKFIELD PLACE, SW6

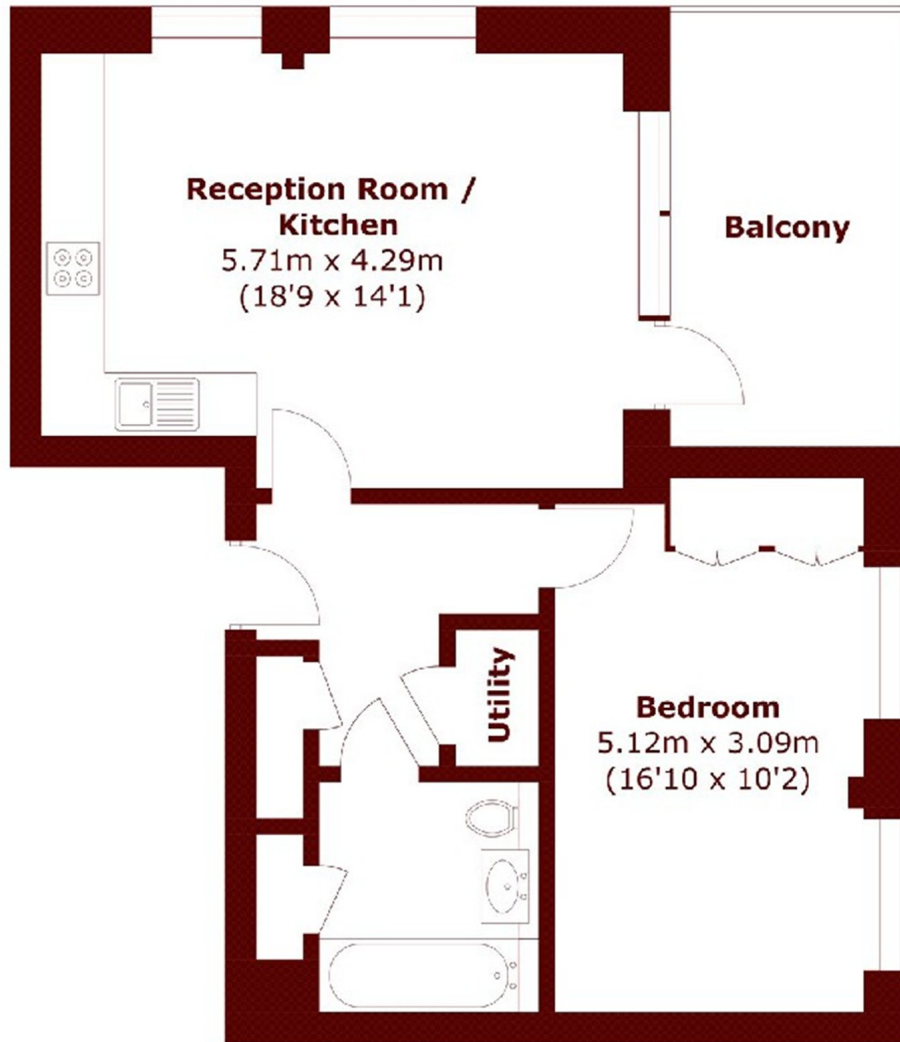
£550,000

A beautifully presented one bedroom apartment set in a sought after Fulham location, offering modern living with excellent convenience. This stunning home features a bright and spacious open plan kitchen.

Close to tube  
Double bedroom  
Private balcony

Long lease  
Near amenities  
Energy rating: b

# STEP INSIDE HECKFIELD PLACE



Total area (approx.): 53.6 sq. m (576.9 sq. ft)  
Balcony: 9.3 sq. m (100.1 sq. ft)

Fulham  
020 7736 9822

Energy Rating: B We aim to make our particulars both accurate and reliable. However, they are not guaranteed; nor do they form part of an offer or contract. If you require clarification on any points then please contact us, especially if you're traveling some distance to view. Please note that appliances and heating systems have not been tested and therefore no warranties can be given as to their good working order

MARSH &  
PARSONS