



West Bradbury Yard, TW8

£630,000

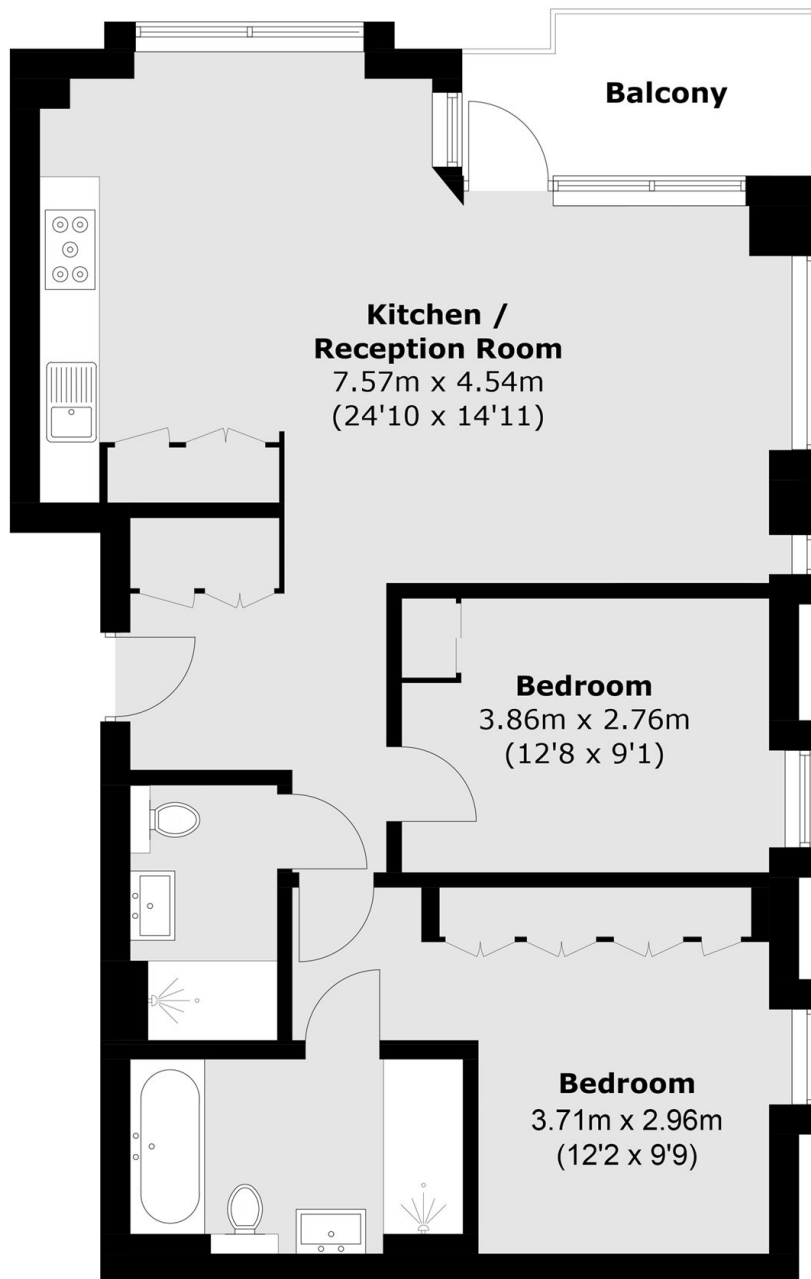
A stunning two bedroom two bathroom apartment featuring a private balcony, lovely views, lift access and a 24/7 concierge. Resident benefit from exclusive access to a state-of-the-art gym, spa and treatment rooms, a contemporary ground-floor co-working and reception area and a stunning open-air heated swimming pool. This property is move-in ready, offering a seamless transition to your new home.

The Brentford Project is an exciting cultural initiative, marking the first phase of a vibrant new town centre, reimagining historic yards linking the high street to the waterfront. It offers a unique blend of destination dining.

Features

- No Onward Chain
- Two Bedrooms
- Two Bathrooms
- Central Location
- Brentford Project
- 24/7 Concierge

West Bradbury Yard, Brentford, TW8



Total area (approx.): 77.3 sq. m (832.0 sq. ft)
Balcony: 5.5 sq. m (59.2 sq. ft)