



## Conant Mews, E1

£375,000

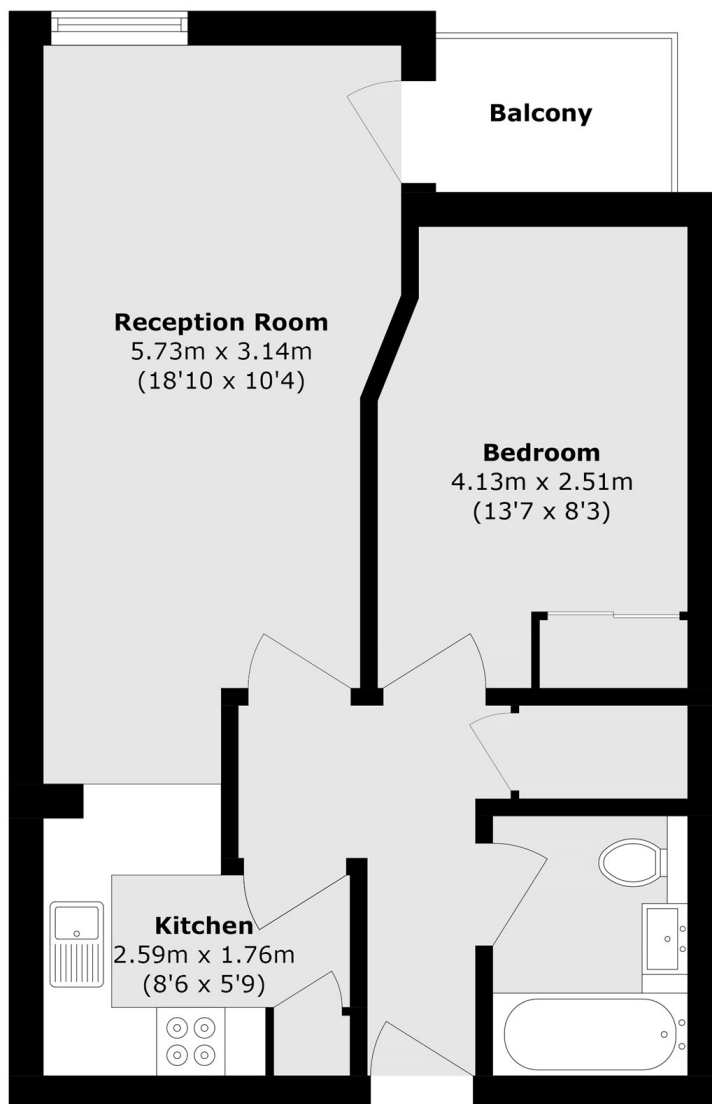
A one bedroom apartment, modernised throughout and set within a popular Central location. The property has a large open plan living room with space to dine. This area leads out to the properties private balcony which looks out onto the development's tree lined communal gardens. The property has a sizeable double bedroom with ample built in storage both in the bedroom and in the hallway. The family bathroom also has modern fittings. The development gives access to an on-site concierge and the apartment has a secure, allocated, parking space.

Hooper Square is perfectly located for access to Tower Hill and Liverpool Street Station (Elizabeth Line), and is just a short distance from Spitalfields market. This location gives access to a wide range of boutique shops, restaurants, cafés and shopping venues making it a very convenient location for residents.

### Features

- One Bedroom
- Modern Interiors
- Private Balcony
- 24hr Concierge
- Communal Gardens
- Allocated Parking Space

# Conant Mews, London, E1



Total area (approx.): 47.1 sq. m (506.9 sq. ft)  
Balcony area (approx.): 2.7 sq. m (29.1 sq. ft)