



LEWIN ROAD, SW16

£825,000

- Five double bedrooms
- Two bathrooms
- WC
- South facing garden
- En-suite
- Energy rating: C

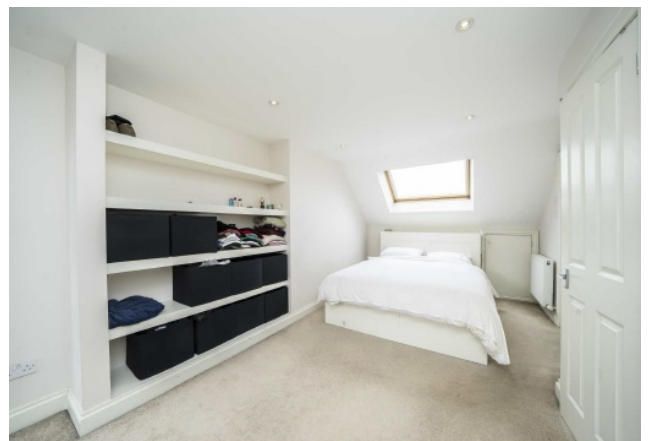




## ABOUT THE HOME

An impressive five bedroom Victorian terrace home with double reception and extended kitchen situated just 0.2 miles from Streatham common station. This is an ideal family home featuring five double bedrooms, two bathrooms including en-suite, downstairs WC and south facing garden.

Lewin Road is a sought after road with a real sense of community, with being perfectly located close to popular cafés and restaurants. The wide open spaces on Streatham common are only a stones throw away, with Streatham common station (Southern railway) and local bus routes all allowing for frequent access into and out of the City.






**JACKSONS STREATHAM**

1-3 De Montfort Parade,  
 Streatham High Road,  
 Sales: 020 8487 3179  
 Lettings: 020 8487 3180

Energy Rating: C We aim to make our particulars both accurate and reliable. However they are not guaranteed; nor do they form part of an offer or contract. If you require clarification on any points then please contact us, especially if you're traveling some distance to view. Please note that appliances and heating systems have not been tested and therefore no warranties can be given as to their good working order.