



Palace Gardens Terrace, W8

£2,050 Per calendar month

This bright and spacious studio apartment is located on the fifth floor of a portered building with lift access. This property has been finished to a high standard throughout, offering a well laid out studio with hard wood flooring throughout and a private balcony. It is the ideal property for a single professional looking for easy access to the city and a beautiful home.

Broadwalk Court is on Palace Gardens Terrace and is convenient for the wide range of shops and amenities of both Notting Hill Gate and Kensington High Street; including Whole Foods, 'Simply Food' and the Coronet' cinema.

Features

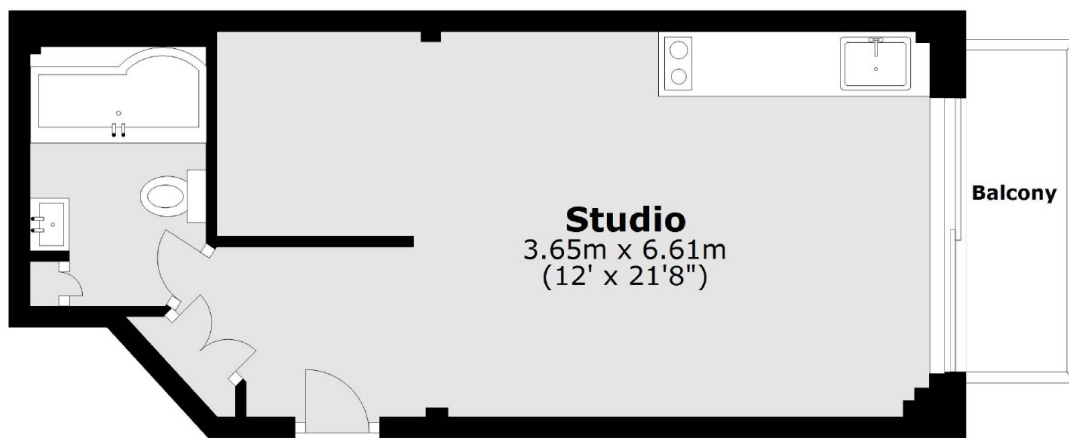
- Porter
- Balcony
- Fifth Floor With Lift
- Wood Flooring
- Heating And Hot Water Included
- Notting Hill Gate Station



Palace Gardens Terrace, W8



Palace Gardens Terrace, London, W8



Main area: Approx. 30.3 sq. metres (325.8 sq. feet)
Plus balconies, approx. 3.2 sq. metres (34.8 sq. feet)