



Liverpool Grove, SE17

£925,000

An exceptional and immaculately presented two double bedroom early Victorian Grade II listed terraced home, beautifully restored and finished to an outstanding standard throughout. This thoughtfully architecturally designed property offers an abundance of well-proportioned living space, cleverly zoned to provide both relaxing areas to unwind and stylish spaces ideal for entertaining. The accommodation flows seamlessly through to a low-maintenance rear garden, perfect for outdoor dining and everyday enjoyment. Offered to the market with no onward chain.

Quietly located overlooking the historic St Peter's Church within a designated conservation area, This peaceful, tree-lined setting is just moments from the dynamic buzz of Walworth Road's cafés, shops and amenities, and a short walk from all that the new Elephant Park development offers. With outstanding bus connections and swift access to Kennington and Elephant & Castle Underground and mainline stations, this prime location delivers effortless connectivity across London and access to the green spaces of Burgess Park.

Features

Immaculate Condition
Freehold, Chain Free
Two Double Bedrooms
Well Connected Location
South East Facing Garden
Character Features



Liverpool Grove, SE17

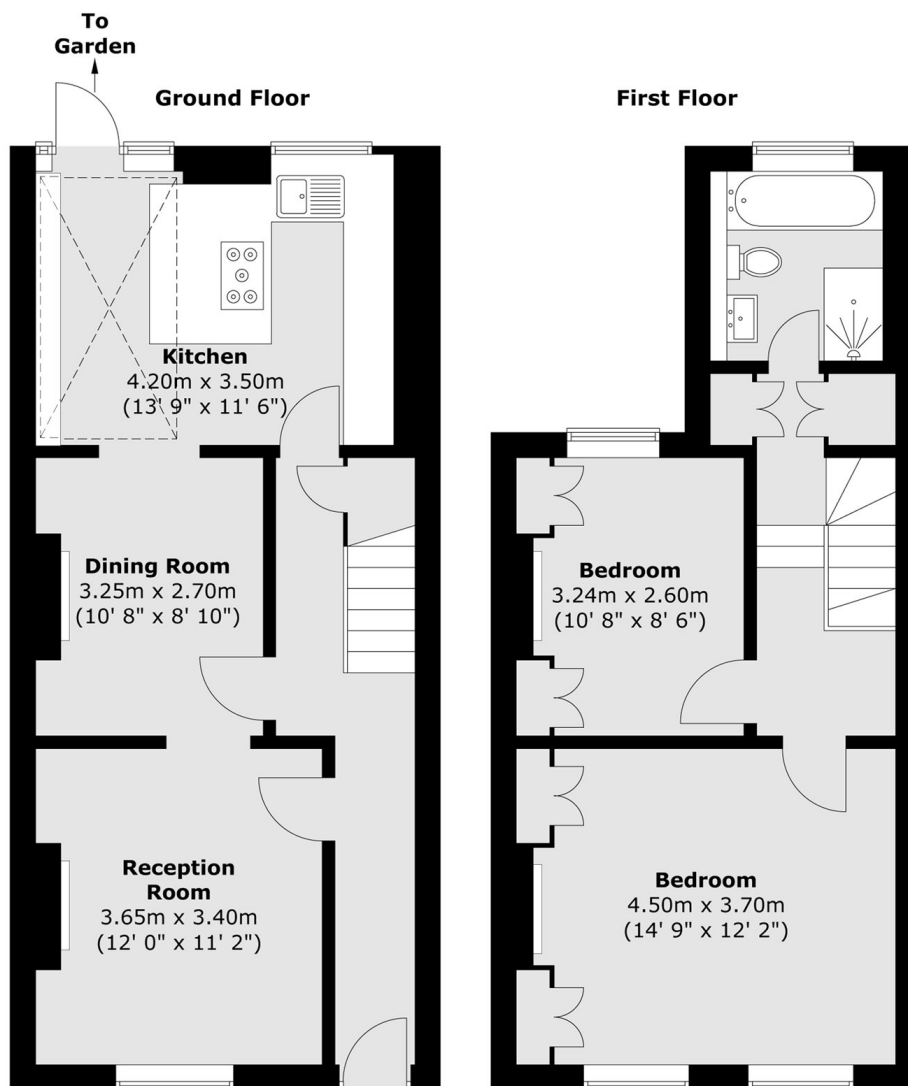
The ground floor opens into a welcoming entrance hall with cleverly hidden storage and a separate laundry space, leading to an elegant front reception room, complete with bespoke fitted cabinetry to the alcoves, a beautiful feature fireplace and a carefully designed lighting scheme that creates a warm and inviting atmosphere. To the rear, a generous dining room, again with a matching feature fireplace, provides the perfect setting for entertaining, comfortably accommodating a large dining table and flowing seamlessly into the impressive extended kitchen. Flooded with natural light from a glazed side-return extension and fully glazed ceiling, this stunning space features book-matched Statuario Italian marble waterfall worktops and matching detailing across the island cabinetry, demonstrating exceptional attention to detail. The kitchen is equipped with high-specification Miele appliances and a fully mounted ABK gas cooking system, ideal for keen home cooks.

The mature south-east facing garden is a true highlight, enjoying sunlight and serenity throughout the day. Two Spanish limestone patios offers an excellent space for outdoor dining and entertaining, whilst the easy grass lawn is bordered by limestone planters filled with established planting, all supported by an irrigation and lighting systems. A bespoke shed with power and lighting provides useful additional storage or workspace.

On the first floor, light floods into the property with the addition of a fully motorised skylight. To the rear, a stylish full Italian marble family bathroom features a freestanding solid bathtub, a separate walk-in shower with an abundance of bespoke storage. The spacious principal bedroom benefits from built-in wardrobes flanking a charming original feature fireplace. The second bedroom is versatile, equally suited as a double bedroom/guest room or home office, with an original feature fireplace, cleverly designed desk area concealed behind pocket doors and additional built-in storage. There is also access to the loft storage with two separately accessible spaces, and thoughtfully designed storage throughout the house.



Liverpool Grove, London, SE17



Total area (approx.) : 88.2 sq. m (949 sq. ft)