



16 Helleson Mill Lane
Lower Hellesdon | Norwich | Norfolk | NR6 5BA

 FINE & COUNTRY

A PERFECT PANORAMA



“In a beautiful, elevated position, with far reaching views and stunning sunsets across the river and marshes, this home captivates right from the start.

It has the good looks and high quality of a 1930s build, but it’s less than 15 years old, so it’s also very comfortable and easy to live in.

Set above and well back from the quiet lane, it feels rural and secluded but it’s within easy reach of the city.”



KEY FEATURES

- A Handsome Modern Property situated in an Elevated Position with River Wensum Views in the Suburb of Lower Hellesdon
- Four Bedrooms with Built-In Storage & Two Bath/Shower Rooms
- The Principal Bedroom benefits from an En-Suite
- Spacious Kitchen/Dining Room with Separate Utility Room and Ground Floor WC
- Sitting Room with Feature Fireplace and Wood Burner plus a Ground Floor Study
- Mature Rear Landscaped Garden with a Sunken Terrace and Further Seating Areas
- Long Front Garden with Stunning River Views
- Brickweave Drive provides Off Road Parking and Access to a Large Tiled Shed/Outbuilding
- Energy Rating: C

With generous lovingly landscaped gardens and the spectacular river views, it feels as though you're in the middle of gorgeous green countryside here, but you're actually incredibly close to Norwich, the city centre just a ten-minute cycle from home. The ideal balance of tranquility and accessibility, this is a super home in a stunning setting and offers the best of both worlds.

City Meets Country

The house was completed in 2012 and the owner came here just one year later. They wanted to be close to the city centre and had originally been looking in the Golden Triangle, but they were bowled over by the amount of space on offer here and by the spectacular view out over the river. The elevated position makes the very best of the views and makes it feel like you're in the middle of the countryside. The peacefulness of this property's position means it comes as a surprise to realise how close you are to the city centre and to a wealth of amenities, including shops, schools, bus routes and more. You have everything on the doorstep.





KEY FEATURES

Wander Amidst The Wildlife

The owner loves to kayak and it's so easy when you call this home. The first time they went out on the water they saw a pair of kingfishers. The sheer variety of wildlife is astonishing. There's a barn owl each evening, otters, hedgehogs, many different birds, deer and so much more. It's paradise if you're a nature lover. It's also ideal for cycling or walking, perfect if you have a dog, with the Marriott's Way and Sweet Briar Marshes nature reserve close by. The sunsets over the river are breathtaking and the house is positioned to frame them perfectly through the large bay windows and from the long front garden. The back garden has a lovely sunken terrace which gets the sun until mid-afternoon, plus a seating area at the far end of the garden to catch the golden hour light. The garden is well stocked with colour and interest aplenty, so it's a lovely place in which to relax.

Period Charm, Contemporary Comfort

The house has been thoughtfully and exquisitely finished, with lovely details that show no expense has been spared. From the brick pathway winding its way through the front garden to the two large bay windows and the decorative brickwork on the front, this is a house that looks like a 1930s property, albeit one that's been incredibly well maintained. Step through the oak front door and you'll see that the ground floor has solid oak floorboards. There's a fireplace with log burner in the main sitting room, plus a classic elegant kitchen with central island in the kitchen dining room. This is perfect for day-to-day family life and for social occasions, and has doors leading out to the sheltered and sunken terrace. The study is nicely tucked away, then you have a utility room and a cloakroom completing the ground floor. The house is large enough for people to have their own private space, but also to gather together. Upstairs, the principal bedroom has the very best view across the water, and also benefits from an ensuite with a bath and separate shower. All four bedrooms have built-in storage, and the family bathroom also has both bath and shower, so everything is well considered and perfect for busy family life.





























INFORMATION



On The Doorstep

Lower Hellesdon is situated to the north west of Norwich within close proximity to Hellesdon, with a wide range of facilities and amenities to include the Royal Norfolk Golf Course, supermarkets, schooling and doctor's surgery. Within walking distance of the property are tranquil river walks.

How Far Is It To?

Within such close proximity to Norwich City Centre there is a large array of cultural and leisure facilities nearby, including Chapelfield shopping centre, bars, restaurants, theatres and cinemas. There are a number of good schools in both the state and private sectors as well as the University of East Anglia. Norwich has a main line station to London Liverpool Street with an approximate journey time of 1 hour 40 minutes, also providing commuter trains to Cambridge. There is an international airport to the north side of the city and access to most major trunk roads. From the A11 Newmarket Road, Cambridge lies approximately 60 miles to the south-west and Newmarket 47 miles.

Directions

Proceed out of Norwich on the Drayton Road and continue over the traffic lights at the outer ring road. Go past the Royal Norfolk Golf Course on your left and at the traffic lights turn left onto Hospital Lane. Proceed along bearing left onto Low Road, then turn right onto Hellesdon Mill Lane. Follow the lane round to the left, in front of the River Wensum and number 16 will be found after a short distance on left hand side.

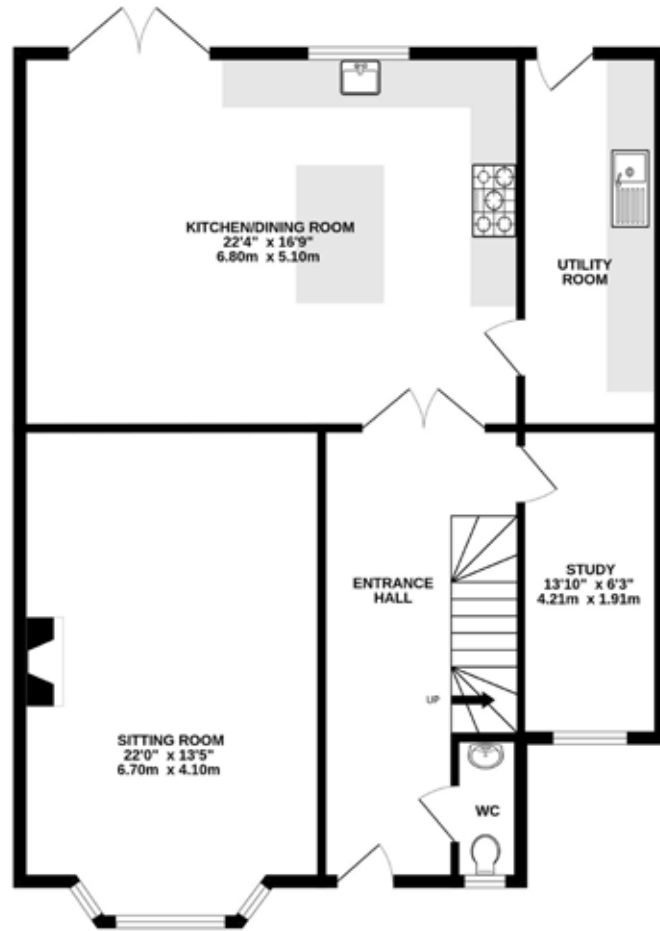
Services, District Council and Tenure

Gas Central Heating, Mains Water, Mains Drainage
Fibre to Premises Broadband Available - vendor uses Vodafone
Mobile Phone Reception - varies depending on network provider
Please see www.checker.ofcom.org.uk - for Broadband/Mobile availability
Norwich City Council - Council Tax Band F
Freehold

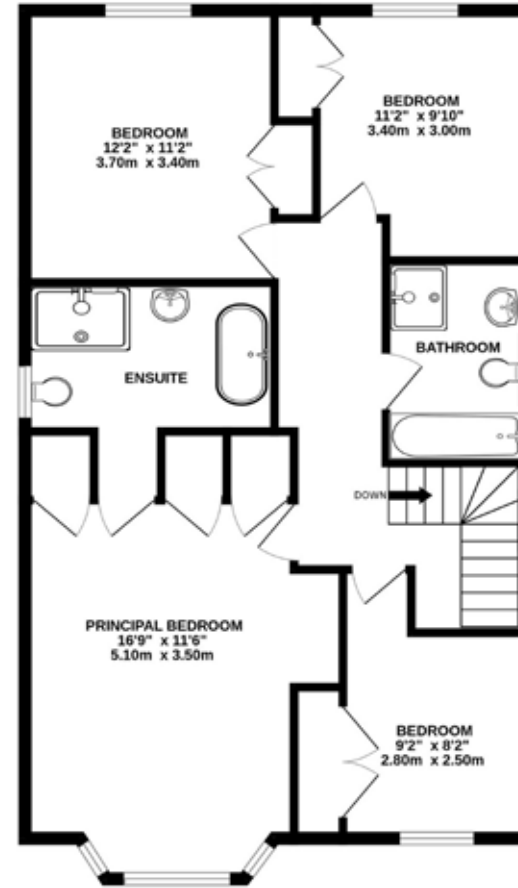
Norfolk Country Properties. Registered in England and Wales No. 06777456. Registered Office - Blyth House, Rendham Road, Saxmundham, IP17 1WA.

Copyright © Fine & Country Ltd.

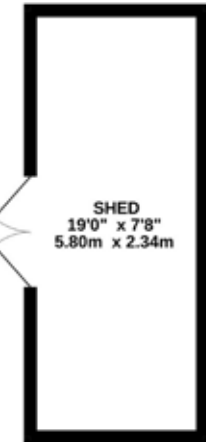
Please Note: All images and floorplans shown in the brochure and online remain copyright to the individual photographer and may not be used for any purposes whatsoever without prior permission.



GROUND FLOOR
1024 sq.ft. (95.1 sq.m.) approx.



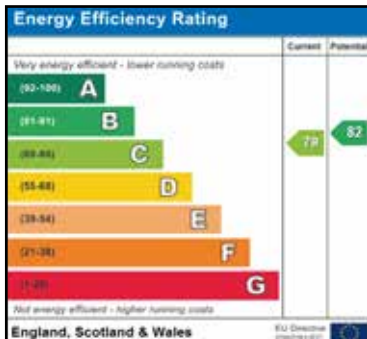
1ST FLOOR
839 sq.ft. (77.9 sq.m.) approx.



OUTBUILDING
146 sq.ft. (13.6 sq.m.) approx.

MAIN HOUSE
TOTAL FLOOR AREA : 1862sq.ft. (173.0 sq.m.) approx.

Whilst every attempt has been made to ensure the accuracy of the floor plan contained here, all measurements are approximate and no responsibility is taken for any error, omission or mis-statement. This plan is for illustrative purposes only. www.norfolkpropertyphotos.co.uk
Made with Metropix ©2026



Agents notes: All measurements are approximate and for general guidance only and whilst every attempt has been made to ensure accuracy, they must not be relied on. The fixtures, fittings and appliances referred to have not been tested and therefore no guarantee can be given that they are in working order. Internal photographs are reproduced for general information and it must not be inferred that any item shown is included with the property.

For a free valuation, contact the numbers listed on the brochure.





FINE & COUNTRY

Fine & Country is a global network of estate agencies specialising in the marketing, sale and rental of luxury residential property. With offices in the UK, Australia, Egypt, France, Hungary, Italy, Malta, Namibia, Portugal, South Africa, Spain, The Channel Islands, UAE, USA and West Africa we combine the widespread exposure of the international marketplace with the local expertise and knowledge of carefully selected independent property professionals.

Fine & Country appreciates the most exclusive properties require a more compelling, sophisticated and intelligent presentation - leading to a common, yet uniquely exercised and successful strategy emphasising the lifestyle qualities of the property.

This unique approach to luxury homes marketing delivers high quality, intelligent and creative concepts for property promotion combined with the latest technology and marketing techniques.

We understand moving home is one of the most important decisions you make; your home is both a financial and emotional investment. With Fine & Country you benefit from the local knowledge, experience, expertise and contacts of a well trained, educated and courteous team of professionals, working to make the sale or purchase of your property as stress free as possible.

THE FINE & COUNTRY
FOUNDATION

Fine & Country Foundation, charity no. 1160989

Striving to relieve homelessness.

To find out more please visit fineandcountry.com/uk/foundation



follow Fine & Country Norwich on



Fine & Country Norwich
12-14 Queen Street, Norwich, Norfolk, NR2 4SQ
01603 221888 | norwich@fineandcountry.com

