



BOULTON ROAD, ASTON REACH, AYLESBURY

PRICE £131,400

LEASEHOLD

**** 36% SHARED OWNERSHIP ****

**GEORGE
DAVID**

BOULTON ROAD

- 36% SHARED OWNERSHIP



LOCATION

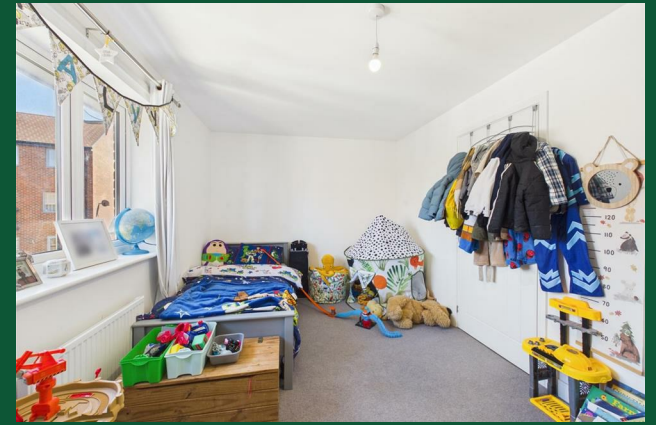
Aston Reach is ideally positioned close to the popular village of Weston Turville and the established amenities of Bedgrove, including local shops, supermarkets, and healthcare facilities. Residents benefit from easy access to well-regarded local schools, making it an attractive choice for families. For commuters, the location is particularly appealing, with convenient road links via the A41 and A418 providing routes towards London, Tring, and Milton Keynes, while Aylesbury railway station offers direct services into London Marylebone in just over an hour.

ACCOMMODATION

NOTES

LEASE INFO - 125 year lease with 120 years left.

BOULTON ROAD





Ground Floor



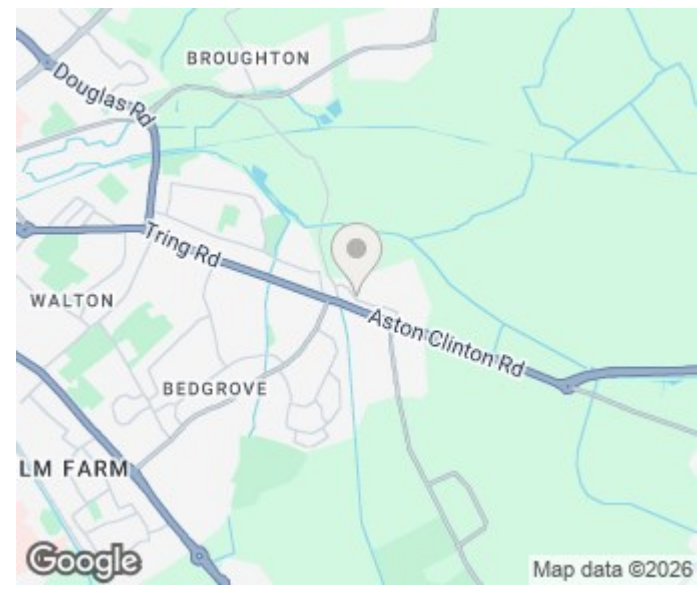
Floor 1

Approximate total area⁽¹⁾
796 ft²
73.9 m²

(1) Excluding balconies and terraces

Calculations reference the RICS IPMS 3C standard. Measurements are approximate and not to scale. This floor plan is intended for illustration only.

GIRAFFE 360



Energy Efficiency Rating		Current	Potential
Very energy efficient - lower running costs			
(92 plus) A			97
(81-91) B		85	
(69-80) C			
(55-68) D			
(39-54) E			
(21-38) F			
(1-20) G			
Not energy efficient - higher running costs			
England & Wales		EU Directive 2002/91/EC	

Agents Note: Whilst every care has been taken to prepare these particulars, they are for guidance purposes only. All measurements are approximate and are for general guidance purposes only and whilst every care has been taken to ensure their accuracy, they should not be relied upon and potential buyers/tenants are advised to recheck the measurements

George David & Co
46 High Street
Aylesbury
HP20 1SE

01296 393 393
info@georgedavid.co.uk
www.georgedavid.co.uk

