



Manuka Close, W7

£750,000

Set within a private gated development, this well presented three bedroom house is offered to the market with no onward chain.

The property offers over 1,000 sq.ft of living accommodation, off-street parking, a newly decked private garden and a bright, modern open-plan kitchen and living area with an abundance of natural light.

The property would benefit from some cosmetic updating, which has been appropriately reflected in the asking price, offering an excellent opportunity for buyers to personalise the home to their own taste.

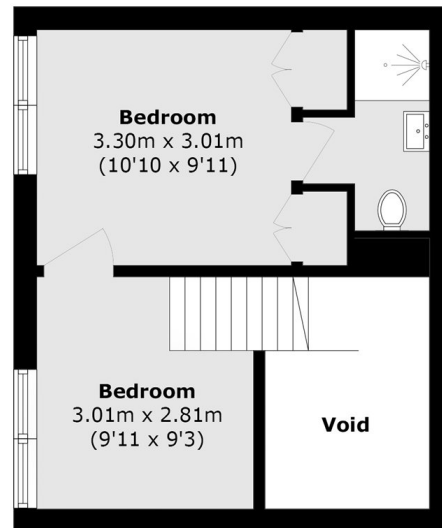
Features

- Private Gated Development
- Three Bedrooms
- Larger Study Space
- Two Bathroom
- Off Street Parking
- Chain Free

Manuka Close, London, W7



Ground Floor



First Floor

Total area (approx.): 97.9 sq. m (1053.7 sq. ft)
(Excluding Void)