

## 6 Abbey Rise, Okehampton

Okehampton

Offers in Region of **£375,000**



# 6 Abbey Rise

Okehampton

- Well Presented
- Three Bedrooms - One Ensuite
- South Facing Garden
- Garage & Parking
- Sought After Location

## SITUATION AND DESCRIPTION

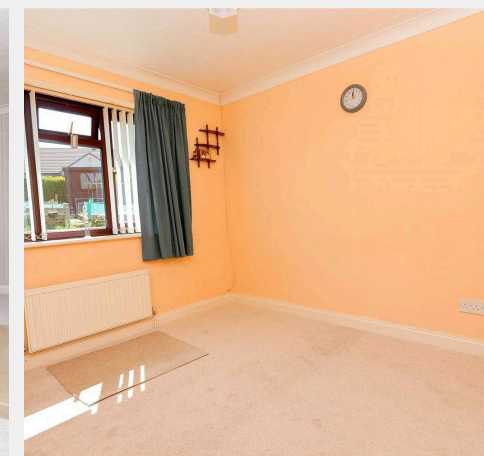
The property is situated in a quiet location on a much sought after residential development towards the eastern outskirts of the town with easy access to the A30 and within walking distance of the new railway

Interchange.

Okehampton lies on the northern edge of Dartmoor National Park. It is approximately 30 miles from both the north and south Devon coasts. There are superb local beauty spots where one may enjoy walking, riding, and fishing. The shopping area contains supermarkets as well as many interesting locally owned shops. Primary and secondary education is well catered for in local schools. The recreation ground and park contain, amongst other things, a covered heated swimming pool. Most sports are available including 18-hole golf course, squash courts, indoor rifle range and thriving rugby and soccer clubs.

The cathedral city of Exeter lies approximately 23 miles to the East.

Of standard construction and completed in the late 1980's the property is a fine example of bungalows typical to the development and presented to a very good standard throughout. Rooms are very spacious and the property enjoys a southerly



## GROUND FLOOR



This floor plan is for illustrative purposes only. Not to scale.  
No responsibility is taken for any error, omission or mistatement.  
Plan produced using PlanUp.

## 6 ABBEY RISE



## Mansbridge Balment

Mansbridge Balment, Office 43, A30Bc, Higher Stockley Mead - EX20  
1BG

01837 52371

[okehampton@mansbridgebalment.co.uk](mailto:okehampton@mansbridgebalment.co.uk)

[www.mansbridgebalment.co.uk/](http://www.mansbridgebalment.co.uk/)

