

1 Bed

Flat

located in 2 New Kings Head Yard

AiHOMES.

LP440920, 2 New Kings Head Yard, SALFORD



£1,300 Per Calendar Month

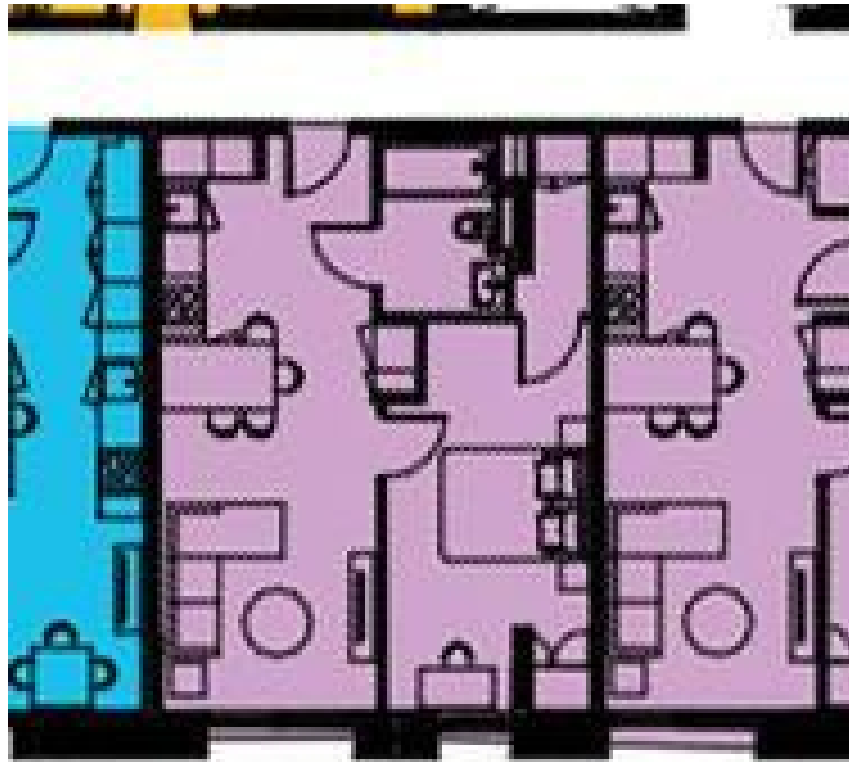
Nestled in the vibrant area of Salford, this charming one-bedroom flat at 2 New Kings Head Yard offers a delightful living space of 506 square feet. Ideal for individuals or couples seeking a modern and convenient lifestyle, this property combines comfort with accessibility.

Upon entering, you will find a well-designed layout that maximises the use of space, creating a warm and inviting atmosphere. The living area is perfect for relaxation or entertaining guests, while the bedroom provides a peaceful retreat at the end of the day. The flat is well-suited for those who appreciate contemporary living, with ample natural light enhancing the overall ambience.

Located in Salford, this property benefits from excellent transport links, making it easy to commute to nearby Manchester and beyond. The surrounding area boasts a variety of local amenities, including shops, cafes, and parks, ensuring that all your daily needs are within reach.

This flat presents an excellent opportunity for first-time buyers or investors looking to enter the property market in a thriving location. With its appealing features and prime position, this one-bedroom flat is not to be missed. Embrace the chance to make this lovely space your new home.

LP440920, 2 New Kings Head Yard, SALFORD



Energy Efficiency Rating		
	Current	Potential
<i>Very energy efficient - lower running costs</i>		
(92 plus) A		
(81-91) B		
(69-80) C		
(55-68) D		
(39-54) E		
(21-38) F		
(1-20) G		
<i>Not energy efficient - higher running costs</i>		
England & Wales	EU Directive 2002/91/EC	

EPC Rating:
Council Tax Band: B

CONTACT

5th floor, Empress Business Center
380 Chester Road
Manchester
M16 9EA

E: info@aihomes.uk

T: 0127 332 8069

AiHOMES.