

**Location:**

Located moments from the new Acton Main Line Elizabeth Line station, this property is in the heart of Acton and is a short walk to the Central, District & Piccadilly tube lines.

**Key points:**

- 2 Bedrooms
- Modern apartment
- Beautiful West facing garden
- Own front door
- 7 Minute walk to Acton Mainline station (Elizabeth Line)
- Available now
- Furnished

# Do Better:

**Acton**  
lettings@astonrowe.co.uk

57-59 Churchfield Road,  
Acton, London, W3 6AY

020 8992 3600

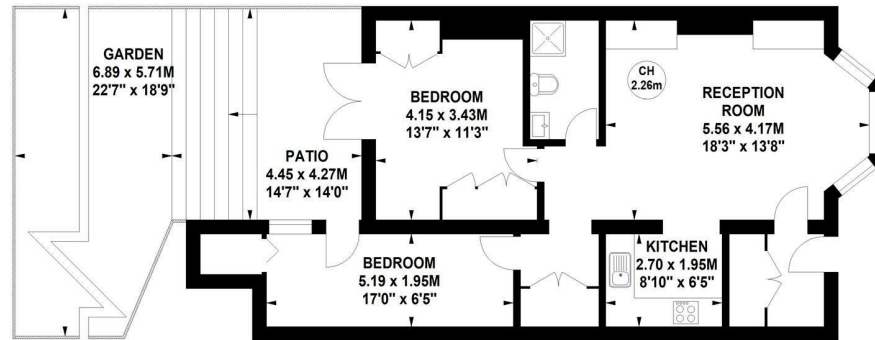
# Aston Rowe



### Horn Lane, W3

Approximate gross internal area  
68.65 sq m / 739 sq ft

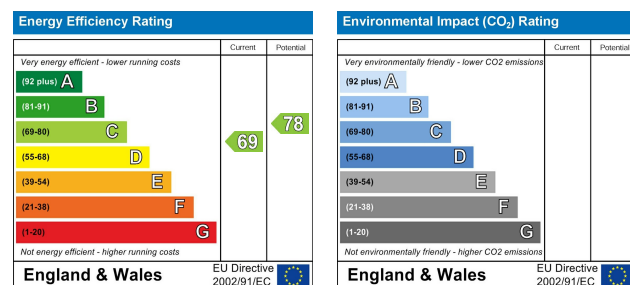
Key :  
CH - Ceiling Height



### Lower Ground Floor

Not to scale, for guidance only and must not be relied upon as a statement of fact.  
All measurements and areas are approximate only

## To Let: £2,150 Per Month Horn Lane, Acton W3 6PP



- 1 Reception Rooms
- 2 Bedrooms
- 1 Bathrooms



**The current tenant says:**

**The apartment comes complete with a beautiful West facing landscaped garden.**

An exceptional two bedroom, ground floor garden apartment set over 739 sqft, located within 7 minutes walk to Acton Mainline station (Elizabeth Line)

The property features an incredibly bright and spacious open-plan kitchen/living/dining area to the front, which opens onto a beautifully landscaped, West-facing garden. Two double bedrooms with fitted wardrobes and bespoke cabinetry and a stylish family bathroom suite with a walk in shower complete the property.

Other benefits include high ceilings, period features, plentiful storage and your own front door.

Moments from Churchfield Road, offering a vibrant cafe culture and a great selection of boutique shops, bars and eateries. The apartment is a 7 minute walk from the Elizabeth Line which offers direct journeys to the heart of London, including Tottenham Court Road in 14 minutes.

**What's better:**

**A wonderful two bedroom garden apartment in W3.**

