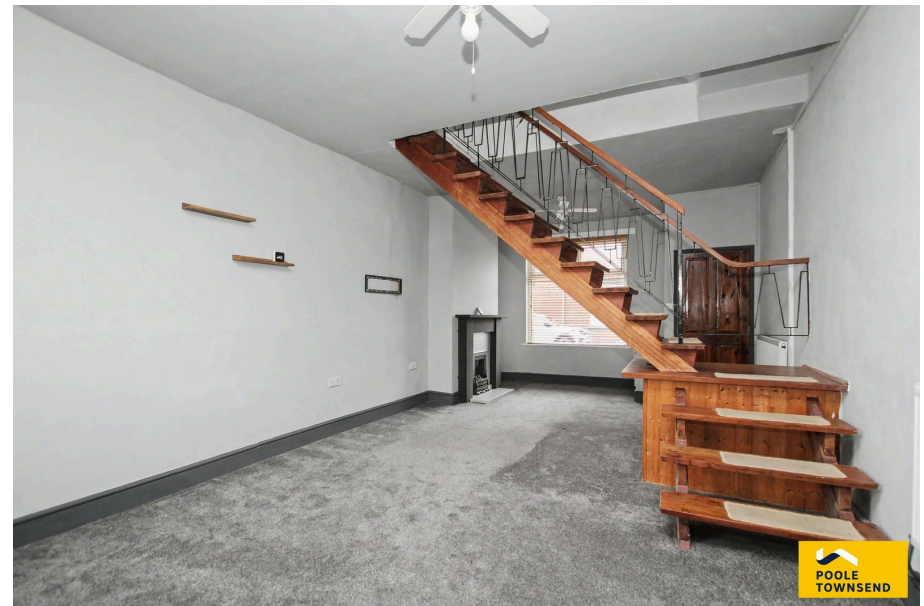




**POOLE  
TOWNSEND**

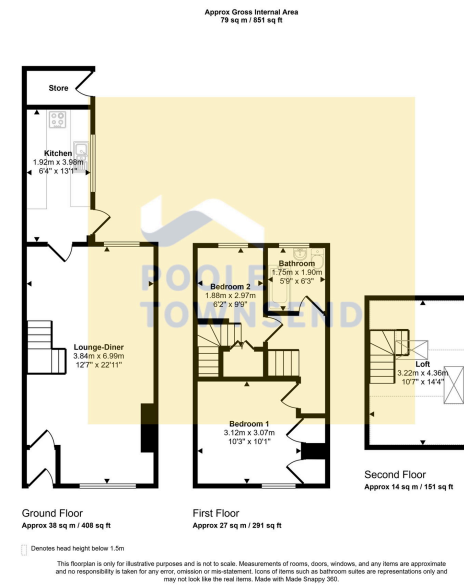
66 Mosley Street,  
£89,950

🛏️ 2 🚿 1 🚗 1



- Popular Residential Area
- NO UPPER CHAIN
- Modern Fitted Kitchen
- Loft Room
- Gas Central Heating
- Ideal for First Time Buyers, Young Professionals And Investors
- Open Plan Lounge And Dining Room
- Two Bedrooms
- Modern Bathroom
- Double Glazing





Situated in a popular residential location appealing to first-time buyers, young professionals and investors, this well-presented mid-terraced home is offered for sale with no upper chain. The property features an open-plan lounge and dining room with an open-tread staircase and gas fire, leading to a modern fitted kitchen with ample storage and worktop space. The first floor offers a double bedroom with fitted wardrobes, a single bedroom with stairs to a versatile loft room with a vaulted ceiling, skylights and radiator, plus a modern bathroom with a shower over the bath. Outside is an enclosed rear yard with gated access and an attached store. Further benefits include gas central heating and double glazing throughout.

Visit us at  
[www.pooletownsend.co.uk](http://www.pooletownsend.co.uk)  
[enquiries@pooletownsend.co.uk](mailto:enquiries@pooletownsend.co.uk)

We are open  
 Monday – Friday 9.00 – 5.00  
 Saturday 9.00 – 1.00

Barrow 01229 811811  
 Ulverston 01229 588111  
 Grange 015395 33316  
 Kendal 01539 734455  
 Milnthorpe 015395 62044