



Alderbrook Road
SW12

CHESTERTONS





A beautifully presented top floor conversion flat set within a semi-detached Victorian property.

The flat boasts well-proportioned accommodation which is light and airy with neutral décor throughout. To the rear of the property there is a modern kitchen and double bedroom. At the front of the flat there is a generous reception room with ample entertaining space and a large bathroom.

The property is located on Alderbrook Road a residential road in the much sought after Nightingale Triangle. The transport links at Clapham South are within a convenient five minute walk of the property, as are the wide open spaces of Clapham Common along with the numerous bars, shops, restaurants, cafes and shopping facilities local to Abbeville Village, Clapham South and Balham.

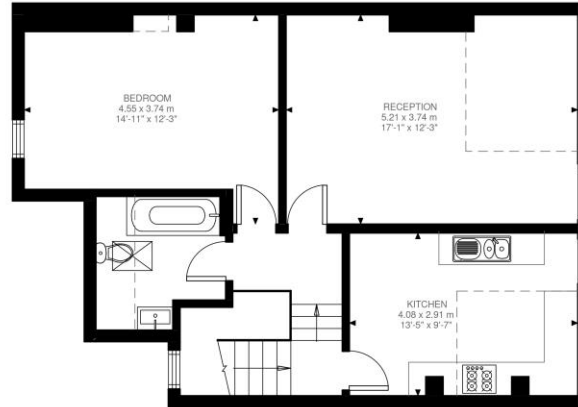
Asking Price £375,000

Tenure: Share of Freehold 144 years 10 months
Service Charge: £0
Ground Rent: £0
Local Authority:
Council Tax Band:

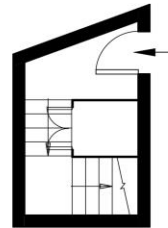
Chestertons Battersea & Clapham Sales

6 Battersea Rise
London
SW11 1ED
battersearise@chestertons.co.uk
020 7924 4400
[chestertons.co.uk](https://www.chestertons.co.uk)

N ← → S



Second Floor
657 ft²



Entrance To Second Floor
68 ft²

Alderbrook Road, SW12
Approximate Gross Internal Area
67.34 SQ.M / 725 SQ.FT
KEY: CH = Ceiling Height
[Restricted Head Height]

Illustration for identification purposes only. Not to scale.
Floor Plan Drawn According To RICS Guidelines.

Chesterton UK Services Limited trading as Chestertons for themselves and for the vendor of this property whose agents they are, give notice that (i) these particulars do not constitute any part of an offer or contract, (ii) all statements contained within these particulars are made without responsibility on the part of Chestertons or the vendor, (iii) whilst made in good faith, none of the statements contained within these particulars are to be relied upon as a statement or representation of fact, (iv) any intending purchasers must satisfy themselves by inspection or otherwise as to the correctness of each of the statements contained within these particulars, (v) the vendor does not make or give either Chestertons or any person in their employment any authority to make or give representation or warranty whatsoever in relation to this property. Wide angle lenses may be used. ©Copyright Chestertons | Chesterton UK Services Limited | Registered Office 40 Connaught Street, Hyde Park, London W2 2AB Registered Company Number 05334580.

