



ERIDGE ROAD

CROWBOROUGH - £850,000

Lilac
House



Lilac House,
ErIDGE Road, Crowborough,
TN6 2SS

Entrance Porch - Cloakroom - Study - Sitting Room
Kitchen/Dining Room - Utility Room - Four Bedrooms
En Suite Shower Room - Family Bathroom - Off Road
Parking - Double Garage - Attractive Landscaped
Gardens - Outside Office/Summerhouse

Offering a great blend of modern amenities and functional spaces, this nearly new detached house has been built by the local quality builder, Prestige Homes of Sussex. The four bedrooms, en-suite shower room, and family bathroom provide ample accommodation for a family or guests. The sitting room offers direct access to the rear garden, while the Burnhill kitchen/dining room, with a utility area, is a focal point for daily living. A separate study offers flexibility for remote working or a hobby area. Externally, there is a double garage with an EV charging point and plenty of off-road parking, along with an enclosed gated frontage. The extended patio to the rear garden has been landscaped by the current owners to offer numerous raised beds, as well as a brand-new outside office/summerhouse, which is double-glazed, insulated, and has power and light. A glance at the attached photos and floor plan provides a good indication of what this perfectly presented family home has to offer. This property enters the market with no onward chain, and we recommend viewing at your earliest convenience.





COVERED ENTRANCE PORCH:

Exterior lighting, flagstone flooring and composite front door opens into:

ENTRANCE HALL:

Stairs to first floor, understairs cupboard, further cupboard with light, wall mounted alarm, tiled flooring and doors to:

CLOAKROOM:

Dual flush wc with quartz worktop over, vanity wash hand basin with storage beneath and sensor touch mirror above, tiled flooring, chrome heated towel rail, extractor fan and obscured window to front.

STUDY:

Data points, oak wood flooring, underfloor heating and window to front.

SITTING ROOM:

Oak wood flooring, underfloor heating, window to rear and bifold doors open directly to rear patio.

KITCHEN/DINER:

Bespoke Burnhill kitchen featuring a range of high quality wall and base units with quartz worktops incorporating twin Butler sinks with Quooker tap. Neff appliances include an induction hob with extractor fan over, eye level twin ovens, fridge/freezer, separate fridge and a dishwasher. Breakfast bar with quartz worktops and area for seating below, tiled flooring, underfloor heating and large window overlooking the rear garden.

UTILITY ROOM:

Range of wall and base units with quartz worktops over incorporating a Blanco sink with swan mixer tap. Siemens integrated washing machine and tumbler dryer, wall mounted Worcester Bosch boiler, wall mounted consumer unit, tiled flooring, underfloor heating controls, window to front and stable door to side.

FIRST FLOOR LANDING:

Large wardrobe cupboard and further storage, loft access via dropdown ladder, fitted carpet, radiator and window to side.

MAIN BEDROOM:

Fitted wardrobe cupboards, panic alarm and controls, tv/data/USB and USB-C points, fitted carpet, radiator, window to rear with views and door into:

EN SUITE SHOWER ROOM:

Tiled double enclosure with rainfall showerhead and extra shower attachment, vanity wash hand basin with storage under and mirrored bathroom cabinet over, low level dual flush wc, chrome heated towel rail, sensor mirrored lighting and obscured window to side.

BEDROOM:

Carpet as fitted, radiator, USB and USB-C points and window to front.

BEDROOM:

Carpet as fitted, radiator, USB and USB-C points and window to front.

BEDROOM:

Carpet as fitted, radiator and window to rear.

FAMILY BATHROOM:

Tiled corner enclosure with rainfall showerhead and extra shower attachment, panelled bath, dual flush low level wc, vanity wash hand basin with storage beneath and mirrored bathroom cabinet over, chrome heated towel rail, sensor mirrored lighting and obscured window to side.

OUTSIDE FRONT:

Brick block driveway providing off road parking for several vehicles with exterior lighting, electric up/over door to detached double garage with EV charging point, power, light and door with side access. The front garden is enclosed by fencing and double gates. Two timber gates lead to the rear garden.

OUTSIDE REAR:

Large extended flagstone patio adjacent to the property with numerous raised beds, a small pond and seven newly planted Hornbeams to the side of the garden. The current vendors have installed a newly fitted "Crane" outside office/summerhouse being insulated, double glazed with power and light. The remainder of the garden is principally laid to lawn with new timber fencing surrounding the property.

SITUATION:

Crowborough, the largest and highest inland town in East Sussex, is nestled within the picturesque High Weald Area of Outstanding Natural Beauty and borders the Ashdown Forest. The town centre has a charming atmosphere, offering a wide variety of supermarkets, independent shops, restaurants, and cafes.



The area boasts excellent state and private schools for both junior and secondary levels, alongside the Crowborough Leisure Centre, which features a swimming pool, gym, sports hall, and a children's playground. The town is well-connected with a mainline railway station offering services to London, as well as a good selection of bus routes. Crowborough also offers plenty of attractions, including nature reserves, sports facilities, playgrounds, a thriving arts scene, and various annual events. To the west, you'll find Ashdown Forest, renowned for inspiring A. A. Milne's Winnie the Pooh. The forest provides an excellent setting for walking, horse riding, and enjoying breathtaking views of the Sussex countryside. The spa town of Royal Tunbridge Wells, located approximately 6 miles to the north, offers a mainline railway station, a wide range of schools, and a diverse mix of shops, restaurants, and cafes, particularly in the historic Pantiles and Old High Street areas.

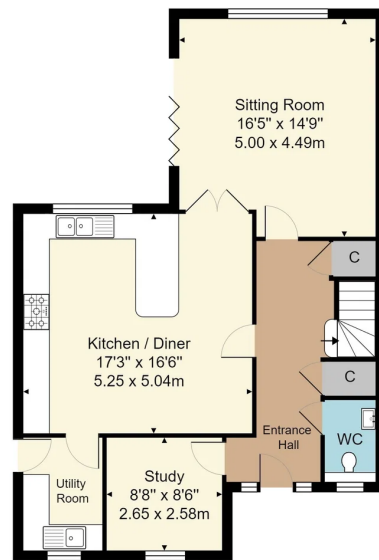
TENURE:
Freehold

COUNCIL TAX BAND:
G

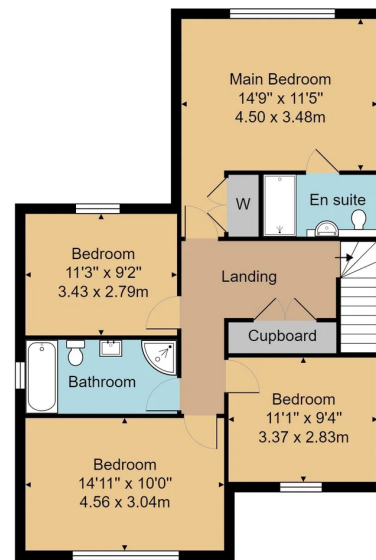
VIEWING:
By appointment with Wood & Pilcher Crowborough
01892 665666.

ADDITIONAL INFORMATION:
Broadband Coverage search Ofcom checker
Mobile Phone Coverage search Ofcom checker
Flood Risk - Check flooding history of a property England
- www.gov.uk
Services - Mains Water, Gas, Electricity & Drainage
Heating - Gas

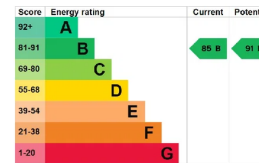
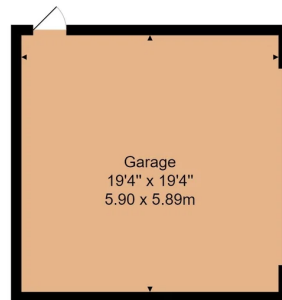




Ground Floor



First Floor



House Approx. Gross Internal Area
1659 sq. ft / 154.1 sq. m

Garage Approx. Internal Area
374 sq. ft / 34.8 sq. m

Whilst every attempt has been made to ensure the accuracy of the floor plan contained here, measurements of doors, windows, rooms and any other items are approximate and no responsibility is taken for any error, omission, or mis-statement. This plan is for illustrative purposes only and should be used as such by any prospective purchaser or tenant. The services, systems and appliances shown have not been tested and no guarantee as to their operability or efficiency can be given.

Important notice - These details have been prepared and issued in good faith and do not constitute representations of fact or form part of any offer or contract. Please note that we have not carried out a structural survey of the property, nor have we tested any of the services or appliances. All measurements are intended to be approximate only. All photographs show parts of the property as they were at the time when taken. Any reference to alterations or particular use of the property wherever stated, is not a statement that planning, building regulations or other relevant consent has been contained. Floorplan. All measurements, walls, doors, windows, fittings and appliances their sizes and locations are shown conventionally and are approximate only and cannot be regarded as being a representation either by the seller or his Agent.

Beacon Road, Crowborough,
East Sussex, TN6 1AL
Tel: 01892 665666

Email: crowborough@woodandpilcher.co.uk
BRANCHES AT CROWBOROUGH, HEATHFIELD,
TUNBRIDGE WELLS, SOUTHBOROUGH & ASSOCIATED LONDON OFFICE
www.woodandpilcher.co.uk

WOOD & PILCHER
Sales, Lettings, Land & New Homes



