



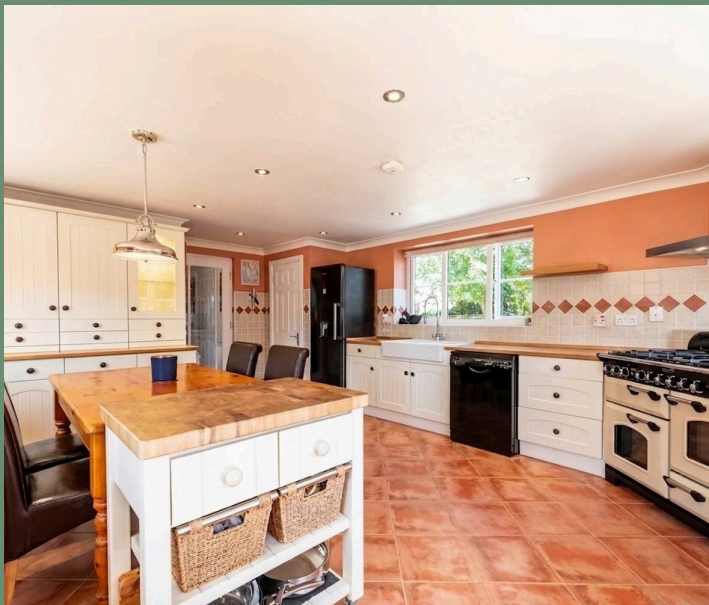
10 Spinney Lane, Stretton  
Oakham



## Key features

- Stone Built 4 Bedroom Detached Home
- 3 Reception Rooms & Garden Room with Woodburner
- Large Country Kitchen with Plenty of Space for Entertaining
- Convenient Separate Utility Room
- Home Office Space
- Double Garage & Gated Driveway#
- Gym/2nd Office Opportunity Above Garage
- Generous Landscaped Garden
- Plenty of Storage in Outbuildings including one as an Office Space/Studio close to the House
- Quiet Location but with Excellent Access Routes for Commuters

Nestled in a peaceful corner of Spinney Lane in Stretton, this beautifully presented stone-built four-bedroom detached home offers a harmonious blend of character and comfort. Stepping inside, you are greeted by three inviting reception rooms, each thoughtfully designed to create cosy spaces for relaxing, entertaining or working. The garden room, with its charming woodburner, provides a delightful spot to unwind and enjoy views of the outdoors whatever the season with panoramic views of the garden. The heart of the home is the expansive country kitchen offering plenty of storage and ample space for family gatherings or culinary adventures.



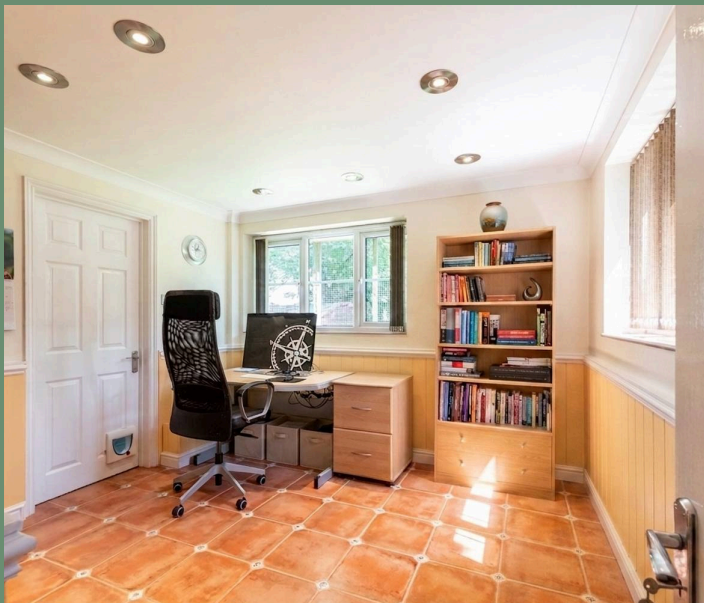




A separate utility room with access to the back garden adds a touch of convenience, keeping daily life running smoothly. Upstairs, four well-proportioned bedrooms promise restful nights, while the home office space outside ensures working from home is both practical and inspiring.

Above the double garage, a versatile room awaits opportunity currently utilised as a gym, but could adapt to studio, or additional office, offering flexibility to suit your lifestyle. With generous storage in a selection of outbuildings as well as one boasting full electrics and providing an additional office/studio and a gated driveway providing secure parking, this property effortlessly combines elegance with every-day practicality.

Beyond the walls, the landscaped garden is a true haven, thoughtfully laid out to offer tranquil corners for morning coffee, sun-dappled lawns for children or pets to play, and vibrant borders bursting with seasonal colour and raised beds for the fruit and veg lovers. Mature trees provide privacy and a sense of seclusion, while paved terraces invite al fresco dining and summer gatherings with friends. The double garage not only accommodates vehicles but currently doubles up as a games room for family gatherings. For those who crave a balance of rural calm and connectivity, the location is ideal. Set in a quiet enclave, the property enjoys a sense of retreat, yet excellent access routes mean commuters can reach nearby towns and cities with ease. Whether you are looking for a family sanctuary, space to work from home, or simply a place to enjoy the beauty of country living, this exceptional home promises a lifestyle to cherish.



The property benefits from Mains Drainage, Mains Water and LPG Gas Central Heating.

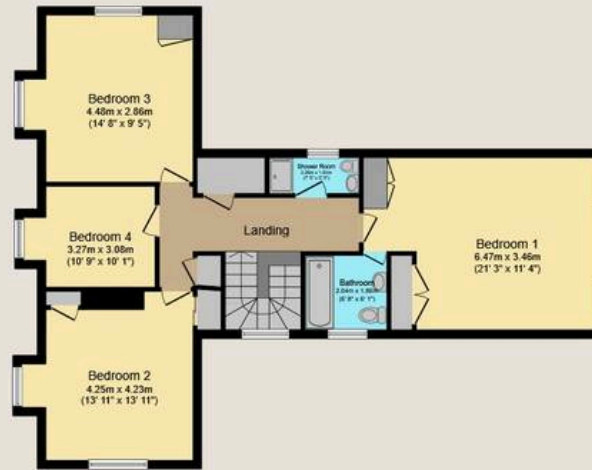




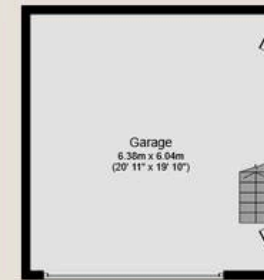
# 10 Spinney Lane, Stretton, Oakham, LE15 7RB



Ground Floor



First Floor



Ground Floor



First Floor

Total floor area: 246.3 sq.m. (2,651 sq.ft.)

This floor plan is for illustrative purposes only. It is not drawn to scale. Any measurements, floor areas (including any total floor area), openings and orientations are approximate. No details are guaranteed, they cannot be relied upon for any purpose and do not form any part of any agreement. No liability is taken for any error, omission or misstatement. A party must rely upon its own inspection(s). Powered by [www.Propertybox.io](http://www.Propertybox.io)

