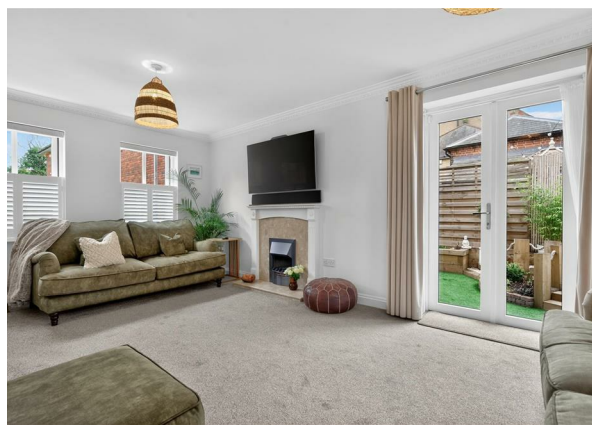
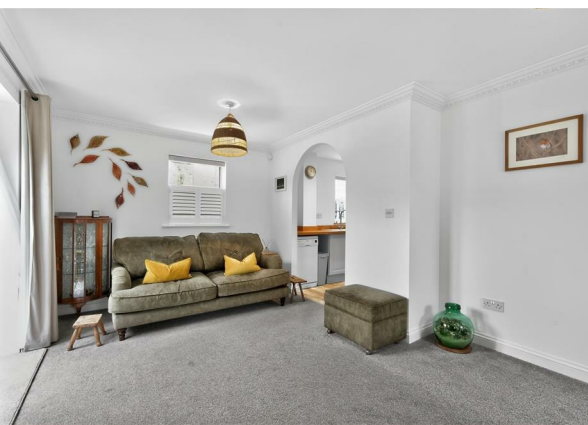
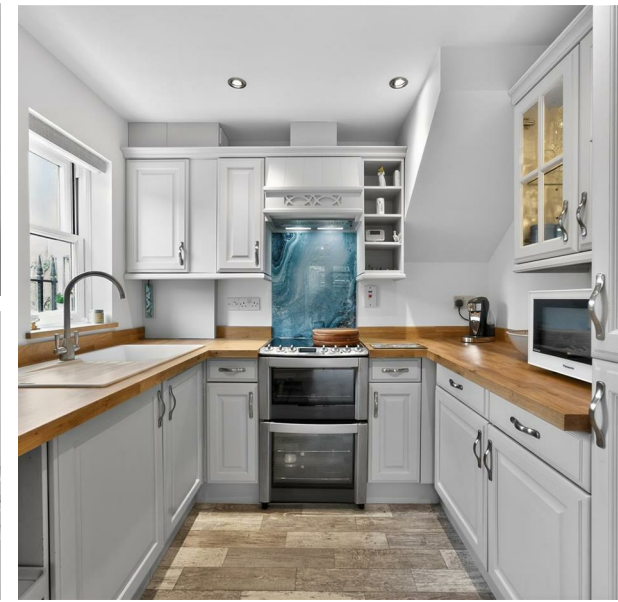


12 The Cloisters Millhams Street, Christchurch, BH23 1DN
Guide price £440,000
Council Tax Band: D

H&H
BESPOKE



Walk in and fall in love....

Tucked away within the highly desirable Cloisters development on Millhams Street in Christchurch, this exceptional end-terrace home has been thoughtfully upgraded and meticulously maintained by the current owners, creating a property that is truly ready to move straight into.

From the moment you step inside, the difference is clear. Every detail has been carefully considered — from the choice of finishes to the overall presentation — resulting in a home that feels both elegant and effortlessly comfortable.

The main living space is beautifully styled, offering a light-filled and inviting environment perfect for both relaxing and entertaining. Clean lines, tasteful décor, and a cohesive design palette run throughout, giving

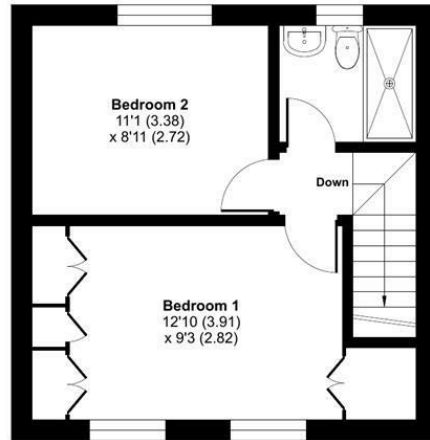


13 Sherrard Street, Melton Mowbray, Leicestershire, LE13 1XH
0333 242 3760
Beth@houseandhomebespoke.co.uk

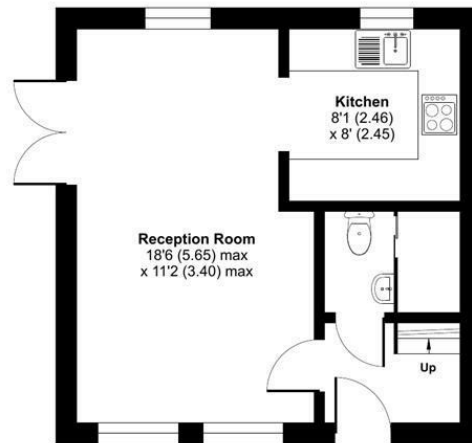
Millhams Street, Christchurch, BH23

Approximate Area = 668 sq ft / 62 sq m

For identification only - Not to scale



FIRST FLOOR



GROUND FLOOR

Floor plan produced in accordance with RICS Property Measurement 2nd Edition, Incorporating International Property Measurement Standards (IPMS2 Residential). © ritchecom 2026. Produced for House and Home Bespoke. REF: 1434425

Energy Efficiency Rating		Current	Potential
<i>Very energy efficient - lower running costs</i>			
(92 plus) A			
(81-91) B			
(69-80) C			
(55-68) D		69	75
(39-54) E			
(21-38) F			
(1-20) G			
<i>Not energy efficient - higher running costs</i>			
England & Wales		EU Directive 2002/91/EC	