



Connells

Moreton Close
Great Gonerby Grantham



Property Description

Connells are delighted to bring to the market this attractive three-bedroom semi-detached house is a popular area is not to be missed.

On the ground floor, Step through the entrance hall into a contemporary kitchen/dining room, complete with ample workspace and room for a dining table. Towards the rear sits a beautifully proportioned sitting room, flooded with natural light through French doors that open onto the garden-ideal for relaxation or entertaining. A convenient downstairs W.C. completes this floor.

The first floor features two well-proportioned bedrooms, family bathroom and a utility room, while the second floor is dedicated to a spacious principal bedroom with an en-suite, offering a peaceful retreat.

Externally, To the front of the property there is allocated parking with a EV charging point. To the rear there is a private enclosed garden, low maintenance with a patio area.

Viewings is highly recommended to fully appreciate this stunning home! Call Connells today 01476590050

Ground Floor

Entrance Hall

With doors leading to the kitchen / diner, sitting room, downstairs w.c, storage cupboard. Stairs leading to the first floor,

Downstairs W.C

With a window to the front, w.c, wash hand basin.

Sitting Room

16' x 11' 4" (4.88m x 3.45m)

With a window to the rear, double doors leading to the rear garden, radiator.

Kitchen / Diner

13' 3" x 8' 10" (4.04m x 2.69m)

With a window to the front, range of base units, integrated fridge freezer, integrated dishwasher, stainless steel sink, built in oven, extractor fan, halogen hob, radiator.

First Floor

Landing

With doors leading to bedroom two, bedroom three, utility room, bathroom, stairs leading to the second floor and a radiator.

Bedroom Two

12' 7" x 9' 7" (3.84m x 2.92m)

With a window to the rear, carpet, integrated double wardrobe, radiator.

Bedroom Three

9' 6" x 9' 4" (2.90m x 2.84m)

With a window to the front, radiator, double fitted wardrobe.

Bathroom

With a window to the rear, shower cubicle, w.c, wash hand basin, bath, towel rail.

Utility Room

6' 2" x 5' 4" (1.88m x 1.63m)

With a window to the front, space for washing machine and dryer, integrated tall cupboard.

Second Floor

Bedroom One

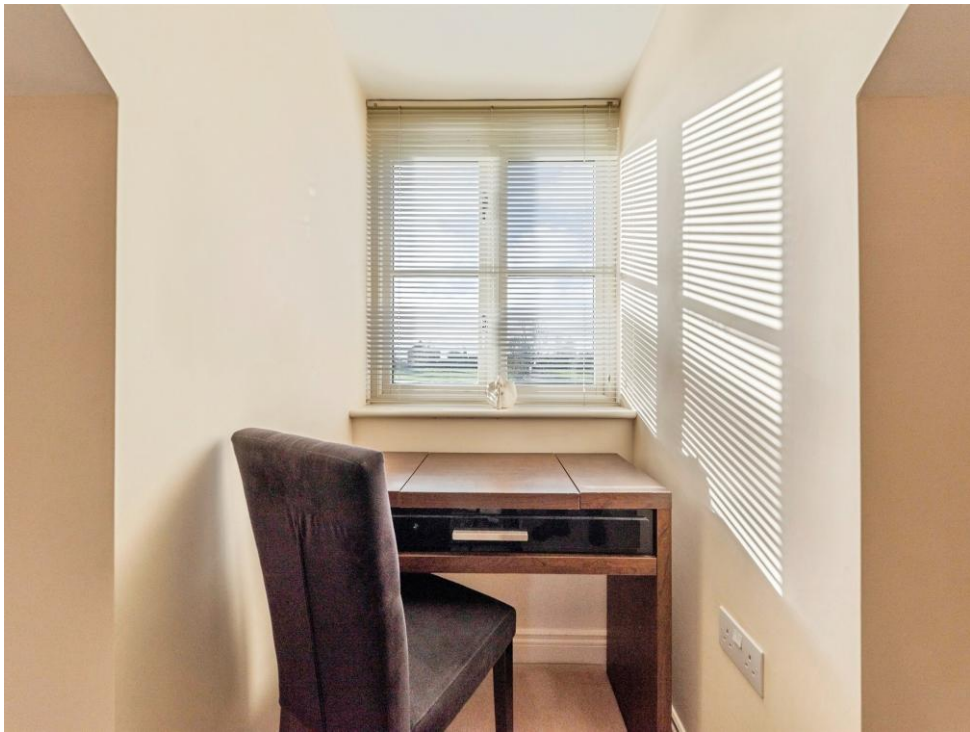
12' 11" x 10' 11" (3.94m x 3.33m)

With a window to the rear, two radiators, loft access, door leading to the walk in wardrobe, door leading to the en-suite.

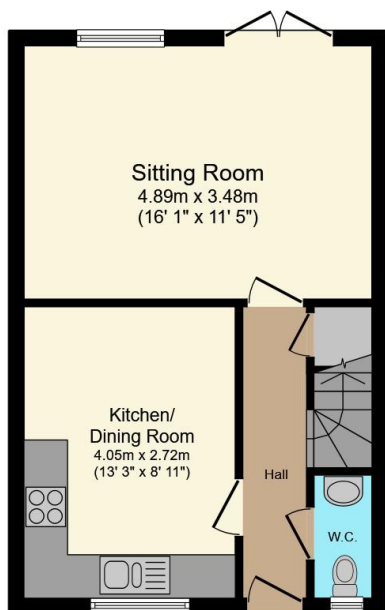
En-Suite

With a velux window, towel rail, single shower, wash hand basin, w.c.

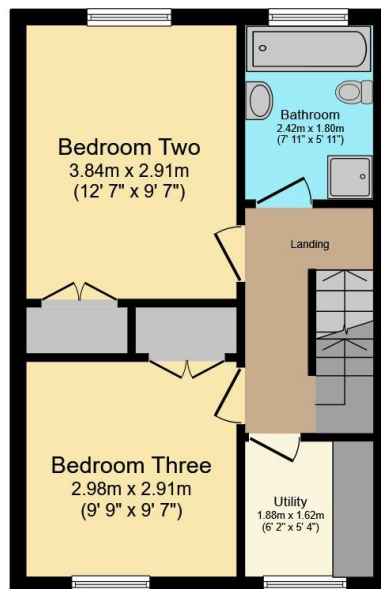




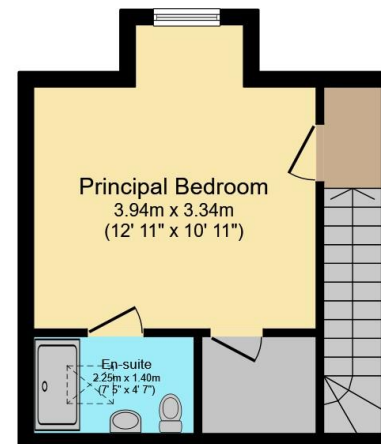




Ground Floor



First Floor



Second Floor

Total floor area 97.2 m² (1,046 sq.ft.) approx

This floor plan is for illustrative purposes only. It is not drawn to scale. Any measurements, floor areas (including any total floor area), openings and orientation are approximate. No details are guaranteed, they cannot be relied upon for any purpose and they do not form part of any agreement. No liability is taken for any error, omission or misstatement. A party must rely upon its own inspection(s). Powered by www.propertybox.io



To view this property please contact Connells on

T 01476 590 050
E grantham@connells.co.uk

2 Watergate
 GRANTHAM NG31 6PR

EPC Rating: C Council Tax
 Band: B

Tenure: Freehold

check out more properties at connells.co.uk



1. MONEY LAUNDERING REGULATIONS Intending purchasers will be asked to produce identification documentation at a later stage and we would ask for your co-operation in order that there will be no delay in agreeing the sale. 2. These particulars do not constitute part or all of an offer or contract. 3. The measurements indicated are supplied for guidance only and as such must be considered incorrect. Potential buyers are advised to recheck measurements before committing to any expense. 4. We have not tested any apparatus, equipment, fixtures, fittings or services and it is in the buyers interest to check the working condition of any appliances.

Connells Residential is registered in England and Wales under company number 1489613, Registered Office is Cumbria House, 16-20 Hockliffe Street, Leighton Buzzard, Bedfordshire, LU7 1GN. VAT Registration Number is 500 2481 05.

See all our properties at www.connells.co.uk | www.rightmove.co.uk | www.zoopla.co.uk

Property Ref: GRM309292 - 0007