

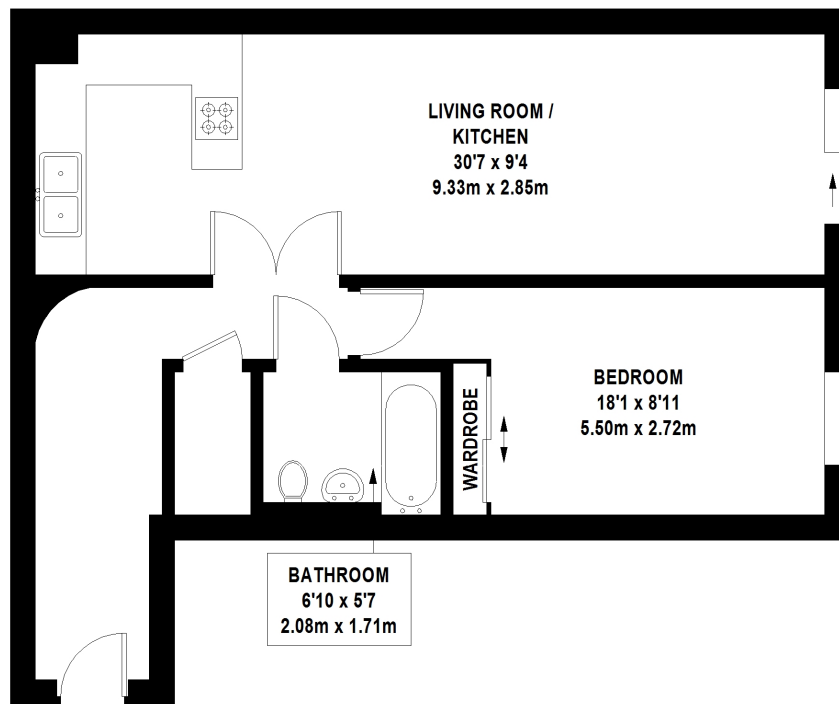


41 MILLHARBOUR, E14

£340,000

A spacious one bedroom apartment in a prime Millharbour location. This ground floor flat features an open plan living room/kitchen with sliding doors onto the courtyard area outside, a double bedroom with built in storage and a family bathroom.

- One Double Bedroom
- Ground Floor
- Built In Storage
- Underground Parking
- 24hr Concierge
- Modern Finish



TOTAL APPROX. FLOOR AREA 606 SQ.FT. (56.3 SQ.M)

Whilst every attempt has been made to ensure the accuracy of the floor plan contained here, measurements of door, windows, rooms and any other items are approximate and no responsibility is taken for any error, omission, or mis-statement. This plan is for illustrative purposes only and should be used as such by any prospective purchaser. The services, systems and appliances shown have not been tested and no guarantee as to their operability or efficiency can be given

© 2022 (ID825471)

LiFE RESIDENTIAL

36 Millharbour, London, E14
9JS

Sales: 020 3668 1033

Lettings: 020 3668 1030

Energy Rating: C. We aim to make our particulars both accurate and reliable. However they are not guaranteed; nor do they form part of an offer or contract. If you require clarification on any points then please contact us, especially if you're traveling some distance to view. Please note that appliances and heating systems have not been tested and therefore no warranties can be given as to their good working order.