

Findon Road, Elson,
Gosport, Hampshire, PO12 4EP

£399,995



Detached Chalet Bungalow

Lounge / Dining Room

Spacious & Modern Kitchen

PVCu Double Glazing & Gas Central Heating

Views From Upstairs Over Playing Field

Three Bedrooms

Ground Floor Bathroom & First Floor Shower Room

L Shaped Conservatory

Block Paved Driveway & Carport

Well Presented Accommodation

023 9258 5588

6 Stokesway, Stoke Road, Gosport, Hants, PO12 1PE

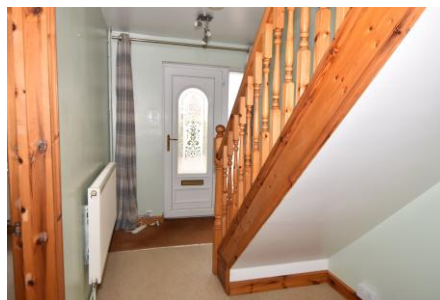
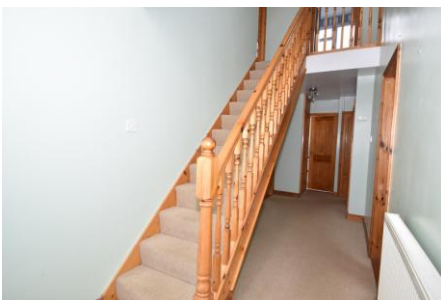
Email: office@dimon-estate-agents.co.uk

To view all our properties visit:
www.GosportProperty.com

Ground Floor



First Floor



**SELLING YOUR OWN PROPERTY IN GOSPORT?
WE ARE A FAMILY RUN BUSINESS SELLING HOMES IN GOSPORT FOR 55 YEARS
AND WOULD WELCOME THE OPPORTUNITY TO BE CHOSEN AS YOUR ESTATE AGENT**

Entrance Hall	PVCu double glazed front door and window adjacent, radiator, stairs to first floor with spindled balustrade, meter cupboard, 2 storage cupboards.
Lounge / Dining Room	
Lounge Area	13'10" (4.22m) x 10'5" (3.18m) PVCu double glazed window, wood burning stove, radiator, coved ceiling.
Dining Area	13'9" (4.19m) x 10'5" (3.18m) PVCu double glazed French doors with window adjacent, radiator, coved ceiling.
Kitchen	11'11" (3.63m) x 10'6" (3.2m) 1½ bowl stainless steel sink unit, cream fronted wall and base units with worksurface over, recess for range style cooker, cooker extractor over, space for American style fridge/freezer, LED skirting lighting, laminate flooring, PVCu double glazed window, tiled splashbacks, inset LED lighting to ceiling and under wall cabinets.
Conservatory	19'8" (5.99m) x 7'10" (2.39m) widening to 19'11" (6.07m), L shaped, PVCu double glazed windows and door, 2 radiators, ceramic tiled floor, base units with worksurface over, plumbing for washing machine and dishwasher.
Bedroom 1	15'9" (4.8m) x 10'10" (3.3m) Twin aspect room with 2 PVCu double glazed windows, radiator, coved ceiling, wardrobe and fitted cupboards.
Bathroom	White suite of panelled bath, vanity hand basin with cupboard under, low level W.C. with concealed cistern, tiled splashbacks, PVCu double galzed window, chrome heated towel rail.
ON THE 1ST FLOOR	
Landing	Gallery landing, roof window.
Bedroom 2	19'3" (5.87m) x 10'3" (3.12m) Twin aspect room with PVCu double glazed window, radiator, roof window, access to eaves.
Bedroom 3	19'3" (5.87m) x 10'4" (3.15m) Max PVCu double glazed window, radiator, access to eaves.
Bathroom	Shower cubicle, low level W.C., vanity hand basin with cupboard under, PVCu double glazed window, radiator, airing cupboard with Vaillant gas central heating boiler, tiled splashbacks,
OUTSIDE	
Front Garden	Block paved driveway, brick garage with double doors to rear, carport, flower beds, side pedetrain access to:
Side & Rear Garden	Lawn, flower borders, 2 patios, area laid to decorative pebbles, secure rear gate to Elson Park.

Services

We understand that this property is connected to mains gas, electric, water and sewage.

Tenure

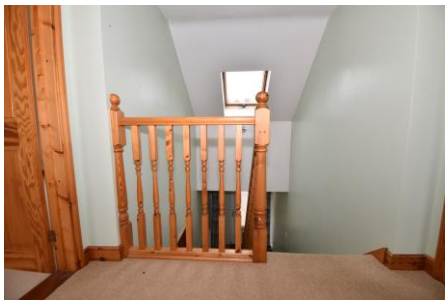
Freehold.

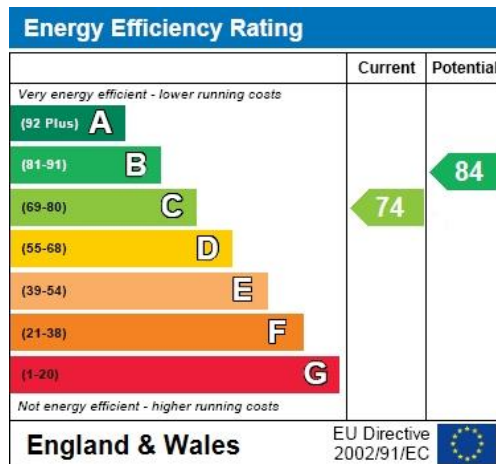
Council Tax

Band D.

Property Information

For information on broadband speed and mobile phone coverage for this property visit: <https://checker.ofcom.org.uk>
For flood risk information visit: <https://www.gov.uk/check-long-term-flood-risk>





Full Energy Performance Certificate
available upon request

Appointment		
Date:	Time:	Person Meeting:
Viewing Notes		

These particulars, whilst believed to be accurate, are set out as a general outline for guidance and do not constitute any part of an offer or contract. Please note we have not tested any apparatus, fixtures, fittings, or services. Interested parties must undertake their own investigation into the working order of these items.

All measurements are approximate. Floor Plans are obtained from a third party and may contain inaccuracies. Photographs are for guidance only and may change over the course of marketing. Information provided on lease terms, maintenance and ground rent have been provided by the vendor and you should ask your legal representative to confirm this information before exchanging contracts.