

## Rosary Gardens, SW7

£1,150,000

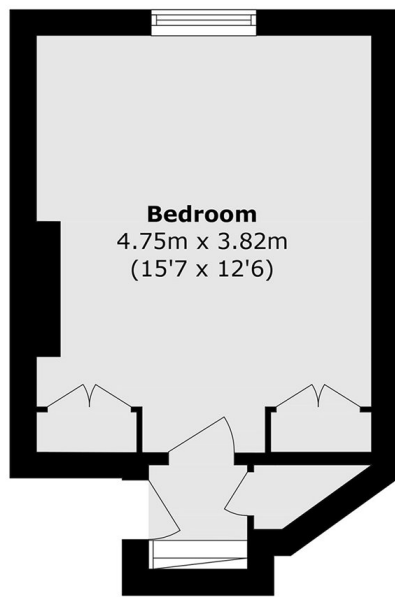
An immaculately finished top-floor apartment in the heart of SW7, this recently refurbished residence presents an exceptional opportunity for first-time buyers, pied-à-terre seekers, or investors alike. Combining contemporary interiors with period charm, the property offers bright and well-balanced living space finished to a high standard throughout.

Rosary Gardens is tucked away just off the Old Brompton road, the apartment enjoys immediate access to some of London's most desirable amenities, as well as excellent transport connections and the green open spaces of Hyde Park and Kensington Gardens.

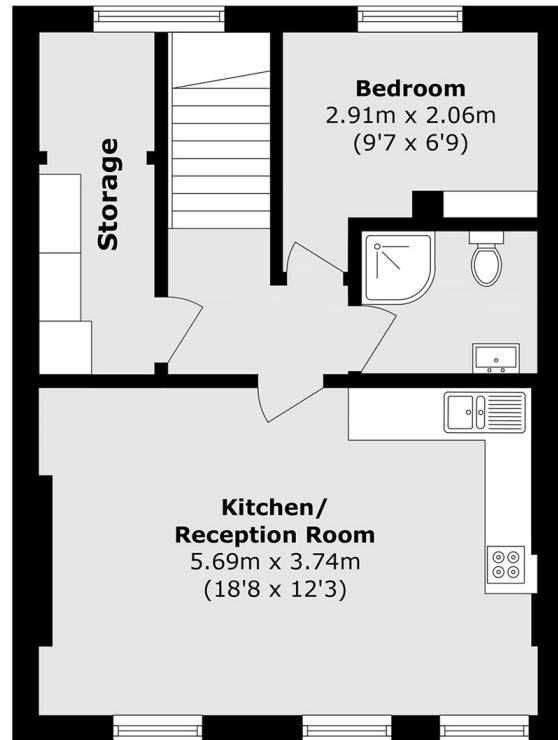
### Features

- No Ongoing Chain
- Highly Sought After Location
- Immaculate Finish
- Share Of Freehold
- Walking Distance Of Station
- Abundance Of Natural Light

# Rosary Gardens, London, SW7



**Third Floor**



**Fourth floor**

Total area (approx.): 64.9 sq. m (698.5 sq. ft)