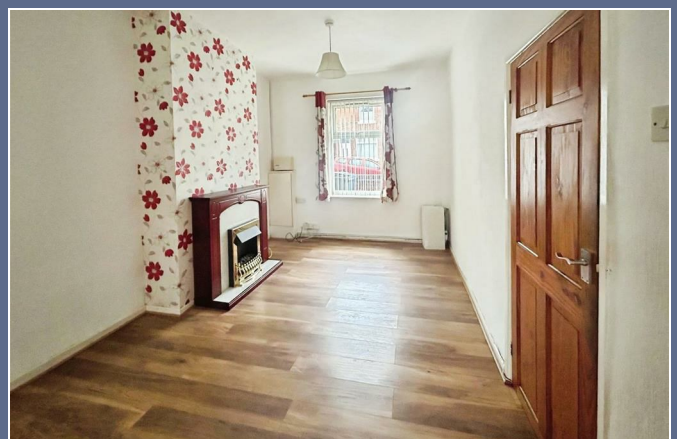




Ellgreave Street  
Stoke-On-Trent



£795



alsagerlettings@stephensonbrowne.co.uk

15 Crewe Road  
Alsager  
Stoke-On-Trent  
Staffordshire  
ST7 2EM

f StephensonBrowneAlsager



t @sbalsager



# 37 Ellgreave Street Stoke-On-Trent

## ST6 4DJ

Welcome to this charming mid-terraced house located on Ellgreave Street in the heart of Stoke-On-Trent. This delightful property has been recently decorated throughout, offering a fresh and inviting feel for its new occupants.

The house features entrance hall leading into a comfortable large reception room, lounge area to the front and dining area to the rear of this room plus access via stairs to the first floor. It has a fitted kitchen plus plenty of storage throughout the property. Upstairs there are two spacious double bedrooms, ample room for a small family or professionals seeking extra space. The conveniently located downstairs bathroom adds to the practicality of the home, making daily routines effortless. Outside there is a small enclosed yard.

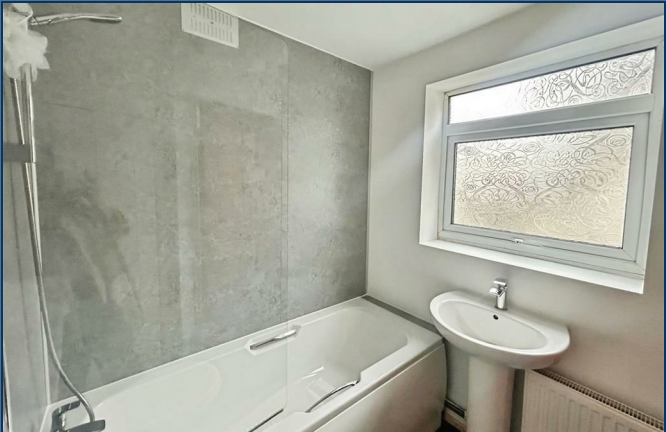
Situated in a great location, this property benefits from easy access to local amenities, schools, and transport links, ensuring that everything you need is within reach. Whether you are a first-time buyer or looking to invest, this mid-terraced house presents an excellent opportunity to own a lovely home in a vibrant community.

Do not miss the chance to view this property and experience its charm for yourself. Available NOW!

£795

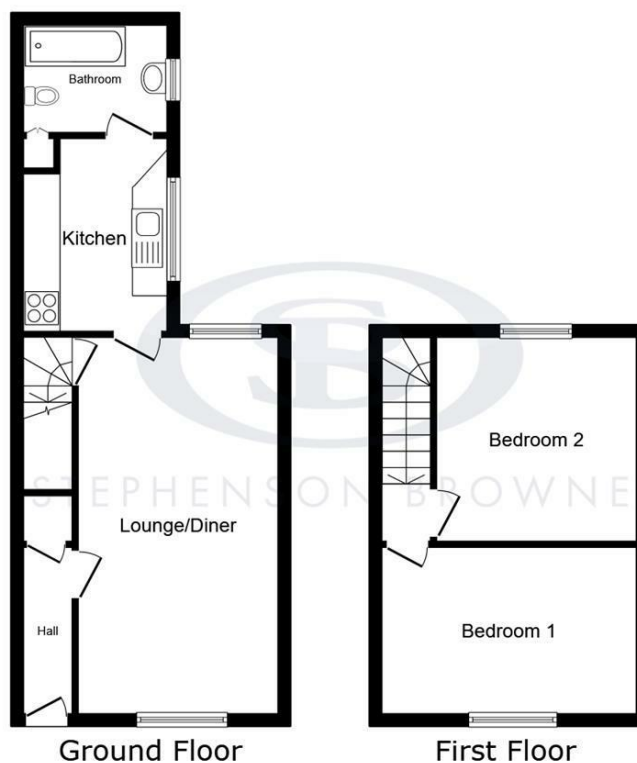


IMPORTANT NOTES





37 Ellgreave Street, Stoke-on-Trent, ST6 4DJ



This floor plan is for illustrative purposes only. It is not drawn to scale. Any measurements, floor areas (including any total floor area), openings and orientations are approximate. No details are guaranteed, they cannot be relied upon for any purpose and do not form any part of any agreement. No liability is taken for any error, omission or misstatement. A party must rely upon its own inspection(s). Powered by [www.Propertybox.io](http://www.Propertybox.io)



## Stephenson Browne Estate Agents

Newcastle  
56 Merrial Street, Newcastle under Lyme  
Staffordshire, ST5 2AJ  
Tel: 01782 625734

Sandbach  
38 High Street, Sandbach  
Cheshire, CW11 1AN  
Tel: 01270 763200

Alsager  
13 Crewe Road, Alsager  
Stoke on Trent, ST7 2EW  
Tel: 01270 883130

**NOT TO SCALE** These floor plans are given as a guide only. Full completed measurements and details should be verified by any intending purchasers legal representative.

**NOTICE:** Stephenson Browne for themselves and for the vendors or lessors of this property whose agents they are give notice that: (1) the particulars are set out as a general guideline only for the guidance of intending purchasers or lessees, and do not constitute, nor constitute part of, an offer or contract; (2) all descriptions, dimensions, references to condition and necessary permissions for use and occupation, and other details are given in good faith and are believed to be correct but any intending purchasers or tenants should not rely on them as statements or representations of fact but must satisfy themselves by inspection or otherwise as to the correctness of each theme; (3) no person in the employment of Stephenson Browne has any authority to make representation or warranty whatever in relation to this property. (4) fixtures & fittings are subject to a formal list supplied by the vendors solicitors.