



OVER 60?

Secure this property
for up to **59% less!**

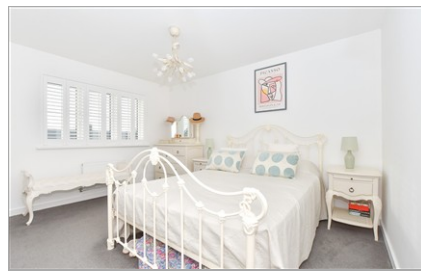
Guide Price
£600,000

Freehold

4x  2x  2x 

**Hazel Close, Headcorn,
Kent, TN27**

Wards
Helping you move forwards



Main features

- Double fronted family home within walking distance to the centre of the village
- Additional living room/ snug/ home office/ bedroom
- Luxurious kitchen/dining room
- Presented in very good condition throughout
- Garage and parking for two cars
- NHBC guarantee remaining

Accommodation

GROUND FLOOR

Entrance Hallway
 Living Room: 18'7 x 11'3 (5.67m x 3.43m)
 Snug: 11'11 x 9'9 (3.63m x 2.97m)
 Ktchen/Diner: 21'7 x 21'4 (6.58m x 6.51m)
 Cloakroom

FIRST FLOOR

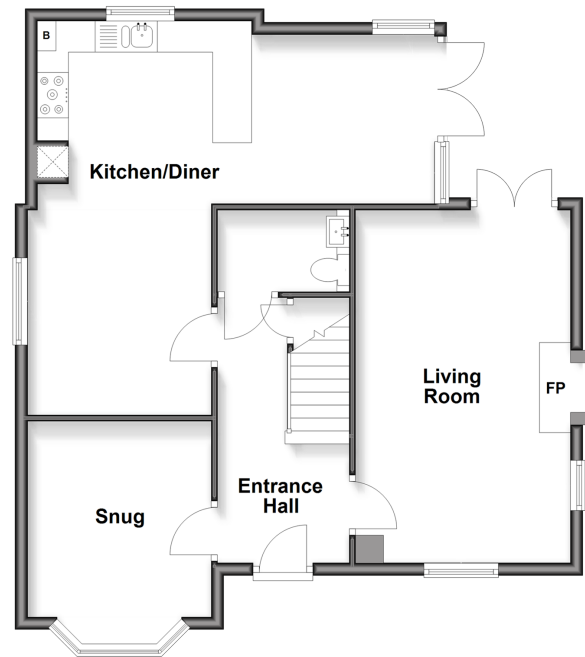
Landing
 Bedroom 1: 16'2 x 11'2 (4.93m x 3.41m)
 En-suite Shower Room
 Bedroom 2: 11'9 x 10'4 (3.58m x 3.15m)
 Bedroom 3: 11'4 x 10'3 (3.46m x 3.13m)
 Bedroom 4: 10'9 x 7'6 (3.28m x 2.29m)
 Bathroom

OUTSIDE

Garage and Driveway
 Front and Rear Gardens

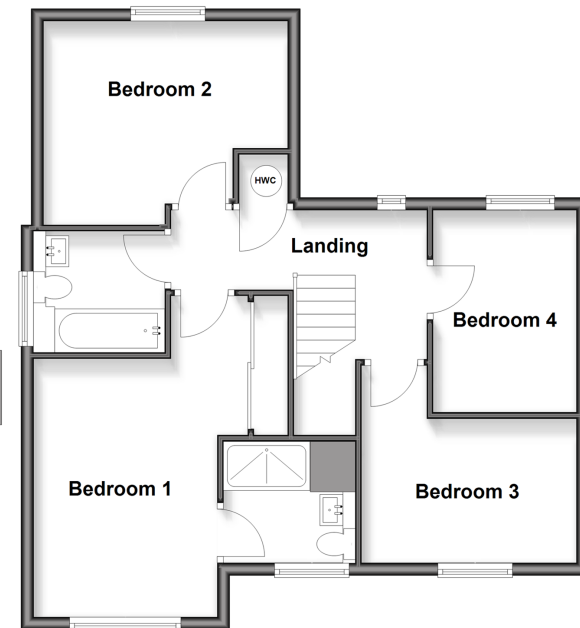
Ground Floor

Approx. 71.0 sq. metres (764.7 sq. feet)



First Floor

Approx. 63.9 sq. metres (687.9 sq. feet)



Call Headcorn - 01622 890435 ■ wardsof Kent.co.uk

■ Legal advice should be taken to verify fixtures/fittings, planning, alterations and/or lease details
 ■ Through a Homewise Home For Life Plan people aged 60+ can secure this property for up to 59% less, by purchasing a Lifetime Lease

■ Appliances & services are untested, dimensions are approximate and floor plans are not to scale



12722239/20260206/DB/HS1