



## Drayton Gardens, SW10

£2,423 Per week

**Dexters**



## Drayton Gardens, SW10

A newly redecorated five bedroom, three bathroom apartment situated on the second floor, with lift access. The property features wooden flooring throughout, high ceilings, and a private balcony.

This spacious and well-presented lateral apartment is located on the second floor of an attractive building in Chelsea. The accommodation includes a double fronted reception and dining room, a separate kitchen fitted with integrated appliances, five bedrooms each with fitted wardrobes, and three bathrooms, one of which is en suite. The property also has a private balcony.

Situated in the heart of London, Chelsea is home to some of the capital's most prestigious addresses. Living in this renowned neighbourhood offers a lifestyle and level of refinement that is difficult to match elsewhere in central London.

### Features

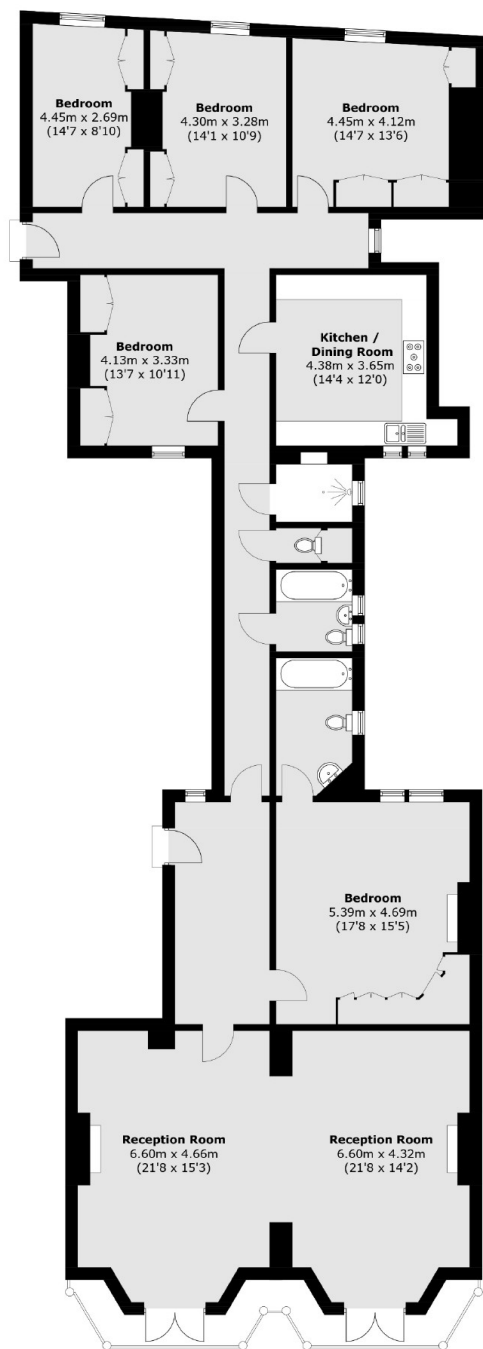
- Five Bedrooms
- Lateral Flat
- Mansion Building With Lift
- Second Floor
- Wood Floors
- Balcony







# Drayton Gardens, London, SW10



## Second Floor

Total area (approx.): 211.9 sq. m (2,280.7 sq. ft)  
External Area : 8.7 sq. m (93.6 sq. ft)