



## Shooters Hill Road, SE18

### £230,000

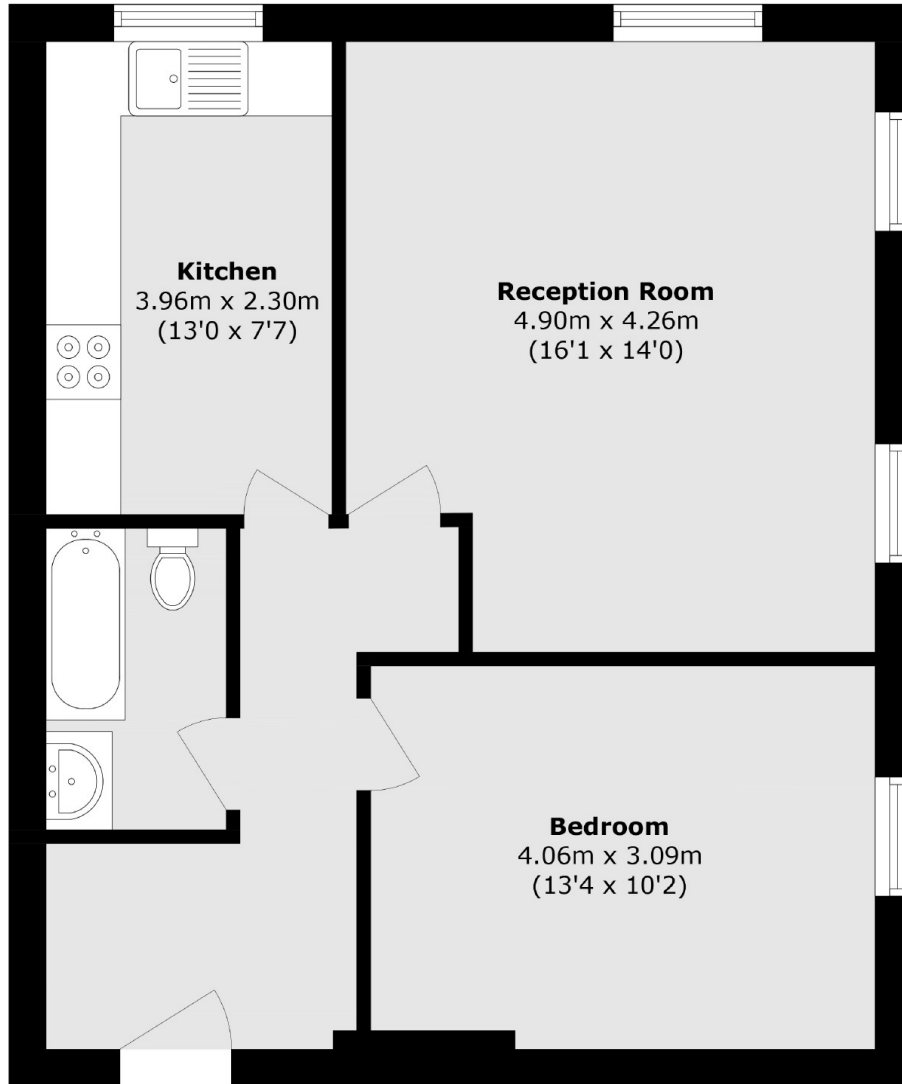
Spacious first floor one bedroom conversion flat on a beautiful development which sits in stunning grounds and comes with an on-site gymnasium, pool and tennis courts.

Situated in the beautifully maintained Royal Herbert Pavilions, close to Woolwich DLR and Elizabeth Line, and regular buses to North Greenwich Jubilee line and within easy access of Blackheath Village.

### Features

Spacious One Bedroom Flat  
Stunning Development  
Pool, Gym & Tennis Courts  
Parking  
Close To Transport  
Offered With No Chain

# Shooters Hill Road, London, SE18



Total area (approx.): 54.1 sq. m (582.3 sq. ft)