

Surbiton Road, Hartburn



£199,950

IH INGLEBY HOMES





Having undergone a transformation, and significantly enhanced with 'little expense spared' - this three bedroom property is a superb example of its kind and demands early inspection.

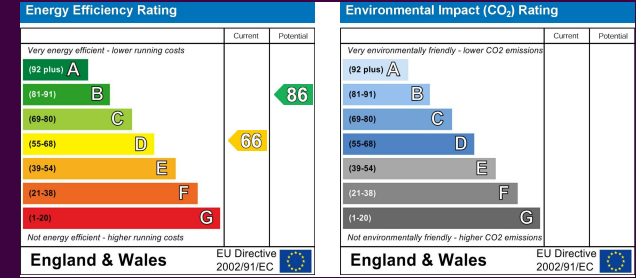
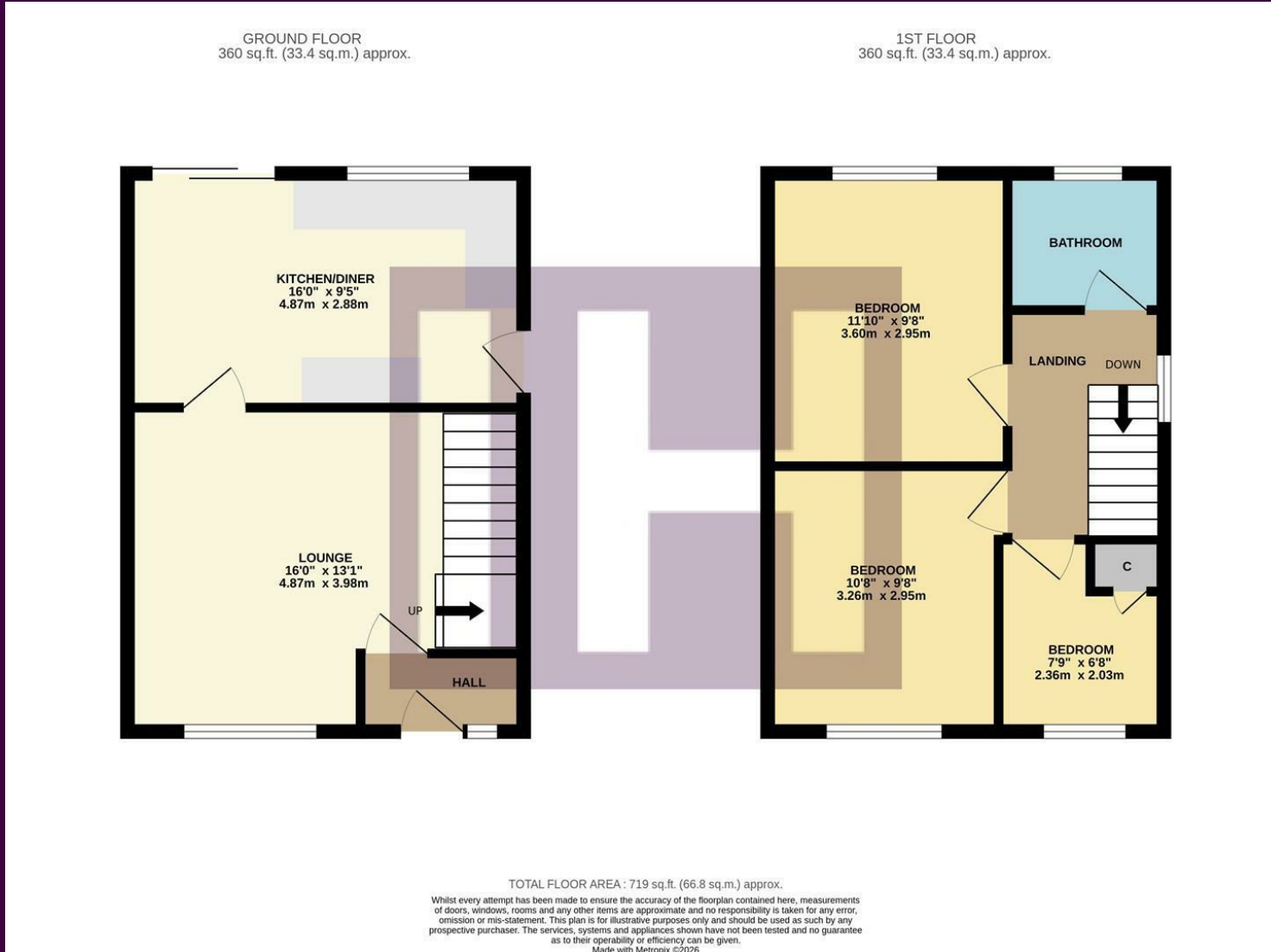
A stunning refitted kitchen compete with integrated appliances and quartz surfaces, stylish refitted bathroom, new front and rear doors, quality LVT flooring, new woodwork, skirting and doors, replaced garage roof, new carpets and fresh decor, and a replaced 'Combi' boiler are just a few of the features worthy of special mention.

Feeling like a 'New Build' - the internal accommodation comprises an entrance hall, spacious living room and open-plan kitchen/diner to the ground floor. The first floor delivers three bedrooms and the stylish family bathroom.



An attractive and practical resin drive allows ample off-road parking, passing the lawn front garden toward the re-roofed garage, with 'up & over' door and relaces side access door, whilst a resin patio adjoins the rear of the property in the fence enclosed garden, with gated side access, lawn and westerly, sunny aspect. No Forward Chain.

The Layout



The Location



Council Tax Band: **B**
Tenure: **Freehold**



- Superbly refurbished, and brought to a fabulous standard
- Feeling 'Brand New' and 'Turn Key' ready
- Stunning refitted kitchen with integrated appliances - all new
- Stylish refitted family bathroom
- Replaced 'combi-boiler'
- Generous Resin drive, gardens and garage
- Favoured 'Hartburn' location



www.ingleby-homes.co.uk
01642 671025

IH INGLEBY HOMES