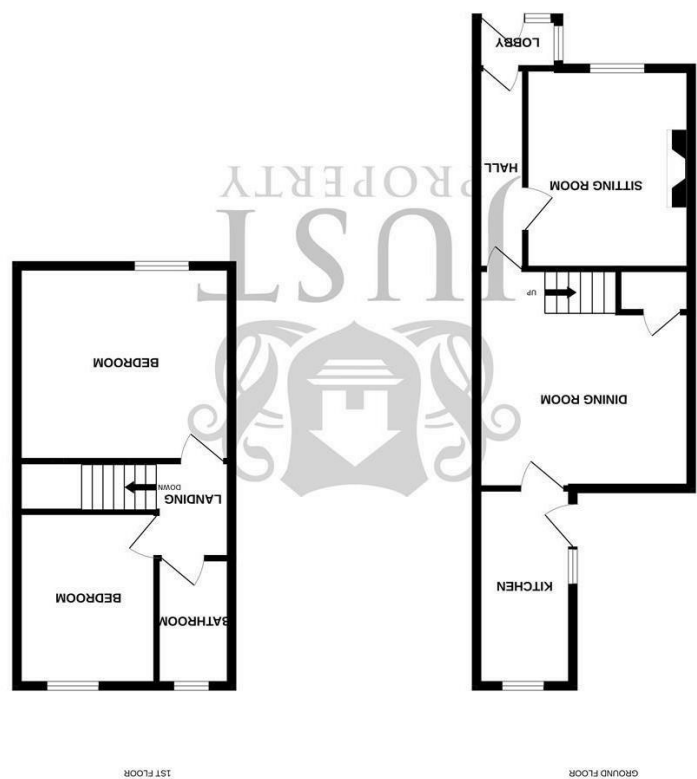


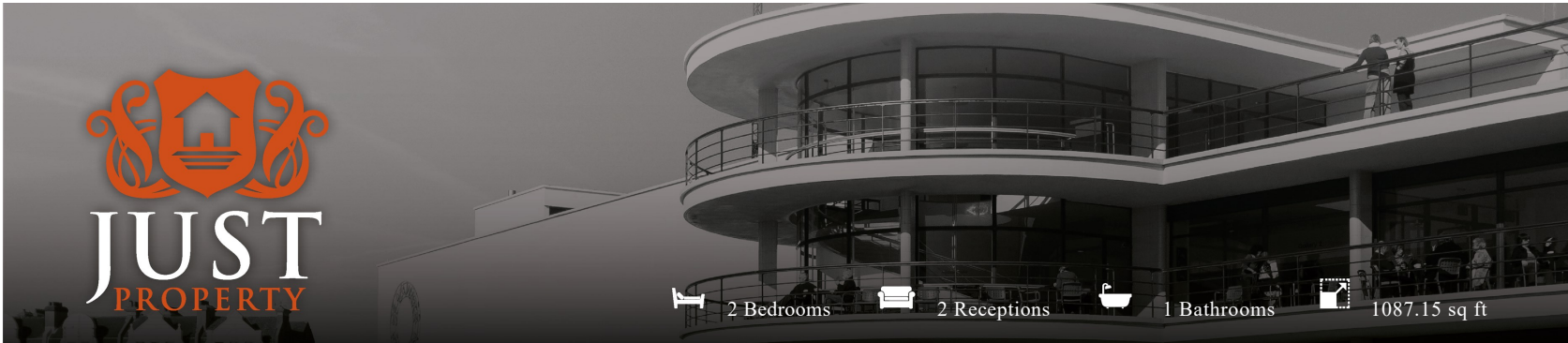
England & Wales	
EU Directive 2002/91/EC	
Very energy efficient - lower running costs	A (92 plus)
	B (81-91)
	C (69-80)
	D (55-68)
	E (39-54)
	F (21-38)
Not energy efficient - higher running costs	G (1-20)
Current	60
Potential	76



FLOORPLANS

53 Little Common Road, Bexhill-On-Sea, TN39 4HU

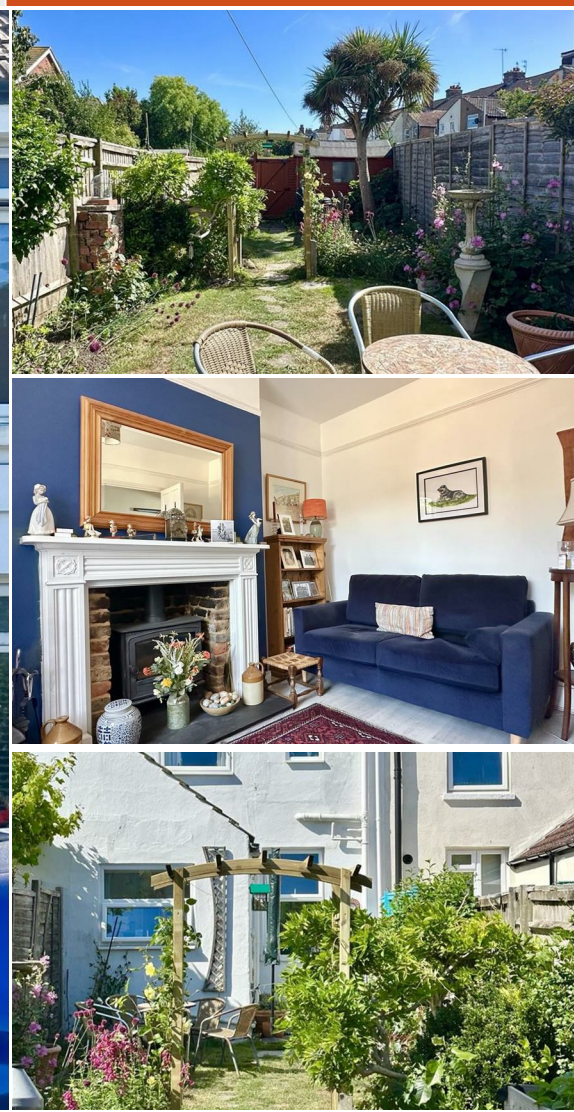
www.justproperty.net



2 Bedrooms 2 Receptions 1 Bathrooms 1087.15 sq ft

Freehold
£262,500

53 Little Common Road, Bexhill-On-Sea, TN39 4HU





2 Bedrooms 2 Receptions 1 Bathrooms 1087.15 sq ft

PROPERTY DETAILS

Nestled on Little Common Road in the charming town of Bexhill-On-Sea, this delightful two-bedroom mid-terraced house offers a perfect blend of character and modern living. Spanning an impressive 1,087 square feet, the property boasts two spacious reception rooms, providing ample space for relaxation and entertaining.

The south-facing rear garden is a true highlight, inviting an abundance of natural light and creating a warm, welcoming outdoor space to enjoy throughout the year. This garden is ideal for gardening enthusiasts or those who simply wish to bask in the sun with a good book.

The property is conveniently located close to local amenities, ensuring that shops, cafes, and essential services are just a short stroll away. This prime location makes it suitable for a variety of buyers, whether you are a first-time homeowner, a small family, or looking to downsize.

With its charming features and practical layout, this terraced house presents an excellent opportunity for those seeking a comfortable and inviting home in a desirable area. Don't miss the chance to make this lovely property your own.

To arrange access for a viewing, contact the vendors choice of sole agents, Just Property to see all this wonderful house has to offer in person.

Council Tax Band - B



ROOM DIMENSIONS

Entrance Porch

Entrance Hallway

Sitting Room
12'5" x 10'2" (3.8 x 3.1)

Dining Room
13'9" x 13'1" (4.2 x 4.0)

Kitchen
12'1" x 5'10" (3.7 x 1.8)

Stairs Up To First Floor

Landing

Bedroom
13'5" x 12'5" (4.09m x 3.78m)

Bathroom
7'10" x 4'11" (2.4 x 1.5)

Bedroom
10'9" x 8'2" (3.3 x 2.5)

Front Courtyard

Attractive Rear Gardens

FEATURES

- Mid Terraced House
- Two Double Bedrooms
- Separate Dining Room Leading Onto Kitchen
- Cosy Lounge With Wood Burner
- South Facing Rear Gardens
- Close To Amenities
- Opposite Bexhill Downs
- Council Tax Band - B
- Double Glazed With Shutters
- Gas Fired Central Heating

