



**Guide Price**  
**£500,000**

**Freehold**

4x  1x  1x 

**Berwyn Grove, Loose,  
Maidstone, Kent, ME15**

**OVER 60?**

Secure this property  
for up to **59% less!**

*Wards*  
Helping you move forwards



## Main features

- **Generous and private rear garden, perfect for the summer months**
- **Spacious and flexible layout**
- **Incredible open plan kitchen and dining area with bi-fold doors and sky light, offering the perfect spot to entertain**
- **Located on a popular road, short walk to sought after Loose Primary School and local shops**
- **NO FORWARD CHAIN**

## Accommodation

### GROUND FLOOR

Entrance Hall

Lounge: 17'4 x 11'9 (5.29m x 3.58m)

Dining Area: 18'7 x 11'3 (5.67m x 3.43m)

Kitchen: 25'3 x 11'11 (7.70m x 3.63m)

Downstairs Cloakroom: 7'8 x 3'7 (2.34m x 1.09m)

Bedroom 1: 18'4 x 8'0 (5.59m x 2.44m)

En-Suite Cloakroom: 7'8 x 5'4 (2.34m x 1.63m)

### FIRST FLOOR

Landing

Bedroom 2: 13'3 x 12'1 (4.04m x 3.69m)

Bedroom 3: 11'5 x 9'5 (3.48m x 2.87m)

Bedroom 4: 10'1 x 8'7 (3.08m x 2.62m)

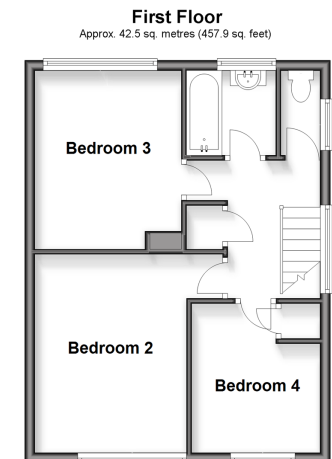
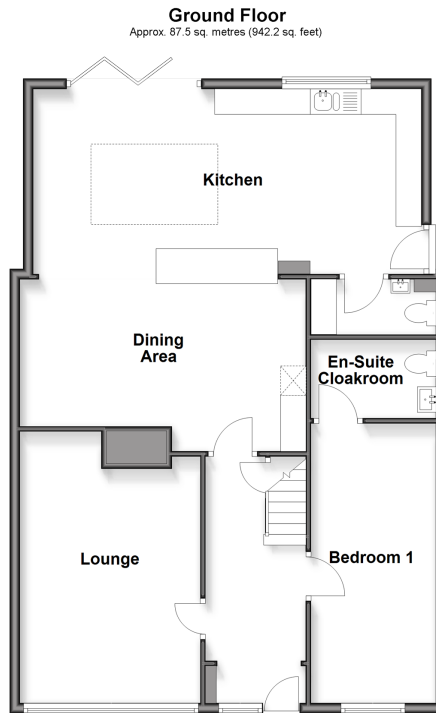
Bathroom: 5'10 x 4'5 (1.78m x 1.35m)

Separate Toilet: 5'6 x 2'5 (1.68m x 0.74m)

### OUTSIDE

Driveway

Rear Garden



**Call Loose - 01622 744067 ■ [wardsofkent.co.uk](http://wardsofkent.co.uk)**

- Legal advice should be taken to verify fixtures/fittings, planning, alterations and/or lease details
- Through a Homewise Home For Life Plan people aged 60+ can secure this property for up to 50% less, by purchasing a Lifetime Lease

- Appliances & services are untested, dimensions are approximate and floor plans are not to scale